

SECTION C - NON-FEDERAL RESOURCES					
(a) Grant Program	(b) Applicant	(c) State	(d) Other Sources	(e) TOTALS	
8. Mapping	\$ 41,994.00	\$ 577,000.00	\$ 434,269.00	\$ 1,053,263.00	
9. Planning	96,917.00	0.00	41,536.00	138,453.00	
10.					
11.					
12. TOTAL (sum of lines 8-11)	\$ 138,911.00	\$ 577,000.00	\$ 475,805.00	\$ 1,191,716.00	
SECTION D - FORECASTED CASH NEEDS					
	Total for 1st Year	1st Quarter	2nd Quarter	3rd Quarter	4th Quarter
13. Federal	\$ 618,250.00	\$ 129,782.00	\$ 129,782.00	\$ 179,343.00	\$ 179,343.00
14. Non-Federal	\$ 577,000.00	288,500.00	288,500.00	0.00	0.00
15. TOTAL (sum of lines 13 and 14)	\$ 1,195,250.00	\$ 418,282.00	\$ 418,282.00	\$ 179,343.00	\$ 179,343.00
SECTION E - BUDGET ESTIMATES OF FEDERAL FUNDS NEEDED FOR BALANCE OF THE PROJECT					
(a) Grant Program	FUTURE FUNDING PERIODS (YEARS)				
	(b) First	(c) Second	(d) Third	(e) Fourth	
16. Mapping	\$ 1,195,250.00	\$ 749,229.00	\$ 779,200.00	\$ 810,369.00	
17. Planning	117,626.00	89,870.00	93,464.00	97,201.00	
18.					
19.					
20. TOTAL (sum of lines 16 - 19)	\$ 1,312,876.00	\$ 839,099.00	\$ 872,664.00	\$ 907,570.00	
SECTION F - OTHER BUDGET INFORMATION					
21. Direct Charges:		22. Indirect Charges: Provisional: \$7,300,000 base, \$2,200,000 indirect			
23. Remarks: Section E, 16-17 Fifth year can be found in the Mapping Budget file found in the Budget Narrative File(s) section.					

Authorized for Local Reproduction

Standard Form 424A (Rev. 7- 97)
Prescribed by OMB (Circular A -102) Page 2

BUDGET INFORMATION - Non-Construction Programs

OMB Approval No. 4040-0006
Expiration Date 07/30/2010

SECTION A - BUDGET SUMMARY

Grant Program Function or Activity (a)	Catalog of Federal Domestic Assistance Number (b)	Estimated Unobligated Funds		New or Revised Budget		
		Federal (c)	Non-Federal (d)	Federal (e)	Non-Federal (f)	Total (g)
1. Mapping	11.558	\$ 3,799,831.00	\$ 952,957.00	\$	\$	\$ 4,752,788.00
2. Planning	11.558	499,247.00	126,225.00			625,472.00
3.						
4.						
5. Totals		\$ 4,299,078.00	\$ 1,079,182.00	\$	\$	\$ 5,378,260.00

Standard Form 424A (Rev. 7-97)
Prescribed by OMB (Circular A -102) Page 1

SECTION B - BUDGET CATEGORIES

6. Object Class Categories	GRANT PROGRAM, FUNCTION OR ACTIVITY				Total (5)
	(1) Mapping	(2) Planning	(3)	(4)	
a. Personnel	\$ 1,703,769.00	\$ 216,047.00	\$	\$	\$ 1,919,816.00
b. Fringe Benefits	430,544.00	58,697.00			489,241.00
c. Travel	258,492.00	16,433.00			274,925.00
d. Equipment	166,196.00	54,224.00			220,420.00
e. Supplies	143,331.00	7,385.00			150,716.00
f. Contractual	496,291.00	85,045.00			581,336.00
g. Construction					
h. Other	128,328.00				128,328.00
i. Total Direct Charges (sum of 6a-6h)	3,326,951.00	437,831.00			\$ 3,764,782.00
j. Indirect Charges	1,425,837.00	187,641.00			\$ 1,613,478.00
k. TOTALS (sum of 6i and 6j)	\$ 4,752,788.00	\$ 625,472.00	\$	\$	\$ 5,378,260.00
7. Program Income	\$	\$	\$	\$	\$

Authorized for Local Reproduction

Standard Form 424A (Rev. 7- 97)
Prescribed by OMB (Circular A -102) Page 1A

Illinois' Mapping Budget Narrative

Illinois' State Broadband Data and Development Program (SBDD) budget for mapping has been informed through a collaborative effort of The Partnership for a Connected Illinois, Inc. The Partnership for a Connected Illinois, Inc. (Connect Illinois), unites three organizations—Connected Nation, Southern Illinois University and Management, Training, and Consulting (Man-Tra-Con). All three principals demonstrate proven track records of broadband Internet mapping, demand creation, and implementation. The partnership will operate in the state of Illinois as Connect Illinois.

Connect Illinois has employed a deliberate and thoughtful methodology to develop a cost model based on well established historical precedent with similar mapping projects in other states to actuate the Illinois State Broadband Data and Development Program (SBDD) project budget. This approach relies upon Connect Illinois's rich program history adjusted for consideration of the enhanced project scope and compressed timeline for deliverables requested by the NTIA. Budget assumptions have been driven by three high-level project areas: provider and community outreach enabling data acquisition; technical expertise necessary for data encoding and mapping; and reliable measures for data validation.

While costs associated with reliable data validation efforts are largely independent of state size or the number of broadband providers, expenses for outreach and data collection, as well as costs for data encoding and mapping are directly related to the state population and the number of broadband providers – more providers translates directly to more data collection and more data mapping causing a higher expense. Connect Illinois has normalized these variable expenses by studying historical and empirical costs in prior broadband mapping projects and dividing those costs by the number of broadband providers involved in those projects resulting in an historical average cost per provider.

This normalized standard is then extended to Illinois to account for provider and community outreach costs based upon the number of broadband providers for that state. The current costing model accounts for a provider relationship management cost of 0.5 hours of FTE time per provider with a reduced update expense of 0.25 FTE time per provider per update for relationship management. In addition, an initial expense of 1 hour of attorney time per provider initially to secure appropriate data sharing relationships with a reduced rate of 0.25 hours of attorney time for each update for ongoing intellectual property and other legal concerns associated with mapping and outreach. Data acquisition for community anchor institutions has also been contemplated as a part of outreach based upon state population, as population would most accurately reflect the number of those facilities which must be included in the project.

Like outreach, technical expertise expenses required for mapping have been driven by historical precedent of prior Connect Illinois mapping projects adjusted to accommodate the increased scope of the SBDD program's reporting expectations. Based upon detailed analysis and technical review with senior staff, Connect Illinois has projected the level of effort required for data encoding, mapping, and reporting to be generally 1.5x the per provider cost for previous mapping efforts. In addition, project coordination and management staffing resources have been budgeted to support on site operations as requested by the state. The data processing and

mapping budget also reflects the budgetary impact of contractual resources required to be engaged on a short term basis to meet the compressed timeframe for the initial delivery of datasets.

Finally, reliable data validation is consistent with historical precedents. Statistically relevant telephone surveys, internet inquiries and verification, and the other standardized validation measures employed are largely consistent and independent of a state’s population or number of providers. As such, this general budget area has been contemplated as a similar cost scaled appropriately to achieve and exceed those validation measures required in the grant guidelines.

In consideration of this scaled, empirically based cost model, this grant proposal will seek a bottom line budget of \$3,799,831 in federal grant funds for the 5-year mapping project from NTIA for the benefit of the state of Illinois. A non-federal, documented in-kind match will be provided from various sources of \$1,053,263 making the total SBDD mapping project budget \$4,853,094.

Mapping	Federal	Non-Federal	Total
Personnel			
GIS Staff	\$ 399,085	\$ 31,298	\$ 430,383
Data Gathering Staff	421,186	32,249	453,435
Collaborations Staff	343,906	36,564	380,470
Project Management Staff	271,962	50,308	322,270
Research Staff	77,979	5,303	83,282
Total Personnel	1,514,118	155,722	1,669,840
Fringe Benefits	378,530	41,157	419,687
Travel	214,959	43,533	258,492
Equipment	133,796	32,400	166,196
Supplies	111,184	32,147	143,331
Contractual	253,476	242,815	496,291
Other Line Items: Datasets	-	115,000	115,000
Other Line Items: Marketing	53,818	74,510	128,328
Indirect Cost	1,139,950	315,979	1,455,929
Total	\$ 3,799,831	\$ 1,053,263	\$ 4,853,094

Percent of Total	78.30%	21.70%
------------------	--------	--------

In order to gather the initial data, a significant effort must be undertaken to establish a legal relationship with each individual provider through Non-Disclosure Agreements and facilitate a data transfer in a format that is usable and able to satisfy the requirements of the NTIA. This greater level of effort, along with other up-front costs, is reflected in the first-year cost.

Personnel: Personnel costs primarily include a portion of employees’ time necessary to fill the following roles:

- Mapping
 - GIS Analysts
 - GIS Manager
- Data Gathering, Updating & Data Validation
 - Wireless Business Analysts
 - Research Analysts
- Collaboration
 - Director of Strategic Partnerships and staff
 - Public Relations Director and staff
- Project Management, Coordination & Reporting
 - Project Management
 - Project Coordinator
 - Web-Hosting Management

Personnel costs would account for nearly 12,500 personnel hours annually to provide the necessary long-term staff for the data collection efforts to identify, establish and maintain working relationships with all of Illinois' broadband providers; to collect and update the data in accordance with NTIA's mapping NOFA; to produce a statewide broadband availability map; to establish data verifiability protocols to ensure accuracy of data and continual testing and checking of mapping data; to manage data update gathering and reporting; to develop and undertake a targeted media campaign to build awareness of consumer's ability to test their broadband speed; to process provider specific information to fulfill the NTIA reporting requirements; to provide periodic reports to the State of Illinois; and for overall project management and coordination. While actual salaries vary according to the skill sets and market environment for the given positions, the anticipated average base salary of the primary positions involved is approximately \$70,000 per year. This baseline of compensation will ensure this collaborative partnership can assemble a qualified team to meet the challenges and full take advantage of all opportunities presented by this program for the benefit of the State of Illinois.

The total personnel costs are \$1,669,840: \$1,514,118 from federal sources, \$123,908 as a cash contribution from the state of Illinois for Connect Illinois' current contract, and \$31,814 provided in-kind by Southern Illinois University (SIU) for oversight of the mapping project. Personnel costs include a 4% cost of living adjustment annually with the exception of SIU's contribution which includes a 5% annual adjustment.

Fringe Benefits: Fringe benefits are estimated to be 25% of the total personnel costs. The cost of fringe benefits included over the life of this grant is \$419,687. The amount requested from federal sources is \$378,530, \$30,977 as a cash contribution from the state of Illinois and \$10,180 provided as an in-kind match from SIU calculated at 32% of personnel costs.

Travel: Travel costs are comprised of mileage, meals, airfare, and hotel accommodation, as well as rental car and associated fuel costs necessary to meet the requirements of the NOFA. Other miscellaneous travel costs may also be included in this category, as needed. Mileage costs would be paid at the applicable standard federal rate; meal costs are estimated at \$45 per day based on the current standard federal per diem rate; airfare costs are based on an average of \$500 per round-trip flight; hotel costs are based on an average of \$200 per night; and rental car and

associated fuel costs are based on an average of \$90 per day. All travel costs include a 4% annual inflation adjustment. The total travel costs are projected to be \$258,492: \$214,959 from federal sources and \$43,533 from the state of Illinois.

Equipment: Equipment for the mapping project includes a portion of the total cost of Broadband STAT (initial cost and annual maintenance) which is a comprehensive mapping and planning tool for states to manage broadband stimulus projects and activities through the ARRA. The initial cost of Broadband STAT is \$60,000 and the annual maintenance cost is \$15,000. Approximately 63% of that cost is included in the mapping budget for a project total of \$77,929. The remaining cost for Broadband STAT is included in the planning budget. In addition, the equipment budget provides for \$2,500 for each Full-Time Equivalent (FTE) per year for that employee's equipment needs. The total equipment costs are projected to be \$166,196: \$133,796 from federal sources and \$32,400 from the state of Illinois. All equipment costs include a 4% annual inflation adjustment.

Supplies: Supply costs include, but are not limited to, office supplies and office expense costs as well as costs for postage, printing, telephone and other similar items directly related to the implementation of this program. The supplies budget includes an initial amount of \$4,850 for each FTE for small equipment as well as \$250 per month per FTE for office supplies, small equipment replacement cost or other necessary costs as detailed above or project specific miscellaneous cost. The total supply costs are projected to be \$143,331: \$111,184 from federal sources and \$32,147 from the state of Illinois. Annual supply costs include a 4% annual inflation adjustment.

Contractual: Contractual costs include provisions for sub-contractors as needed to provide the necessary support to our GIS, Data Gathering, or other personnel in order to meet the requirements in the NOFA. Contractual costs anticipated related to GIS analysts are \$113,905. The estimated consultant cost related to data gathering and validation needed to produce the maps delivered in November, February and March is \$79,900. We do not expect to engage consultants on a continuing basis to support update costs for data validation, but we will engage consultants as needed to ensure the successful delivery of the project. It is anticipated that the vendors selected would contribute an hour in-kind for every hour worked and as such half of the above listed amounts would be in-kind contributions.

Contractual costs also include the legal expertise essential to execute the Non-Disclosure Agreements with the providers. The estimated legal cost related to the legal agreements needed to produce the maps delivered in November, February and March are \$41,800 with semi-annual update costs totaling \$10,450: total cost over the life of the project of \$144,549. Connect Illinois' attorney has committed to contribute an hour in-kind for every hour worked and as such half of the above listed amounts would be in-kind contributions.

A portion of the research surveys and research consultant costs are included in this category to provide consistent and relevant data validation. Annual research survey costs are estimated at \$42,460. Approximately 65% of the survey cost is included in the mapping budget for a project total of \$149,485. In addition a research consultant will provide services over the life of the project totaling \$8,447.

The total contractual costs are \$496,291: \$253,476 from federal sources, \$130,589 from the state of Illinois, and \$112,226 as an in-kind contribution from third-party consultants. Connect Illinois has demonstrated the ability to engage consultants with the desire to contribute to the initiatives carried out by the non-profit organization. In-kind support letters are attached as evidence of this ability. All contractual costs include a 4% cost of living adjustment annually.

Datasets: Illinois workNet system maintains a dataset that contains many of Illinois Community Anchor Institutions. In researching comparable data bases and factoring in the supplemental costs associated with upkeep we find the comparative value to be in excess of \$115,000 over the 5 year period of time. We believe this cost to be underestimated when taking into account the salaries issued to the lead administrative programmer and lower level programmers. However, in conversation with Illinois workNet officials we have been assured that the release of data sets and/or transfer of data sets to various service specific system maps should not be labor intensive. In further discussion it was noted that whatever additional data we may provide would be geo-coded and therefore non-problematic as well. This suggested value in no way reflects the entire value of the Illinois workNet system nor any prorata share of such value.

Outreach: Included in the budget are costs necessary for Connect Illinois to develop a media campaign to build awareness of consumers' ability to validate the broadband mapping data through the interactive map and the broadband speed test. Other outreach efforts will be engaged as needed to support and fulfill the requirements of the grant. Outreach will continue throughout the life of the project but will have a concentrated effort in the first six months. Connect Illinois has demonstrated the ability to engage vendors with the desire to contribute to the initiatives carried out by the non-profit by contributing a one-to-one match on advertising. For this project, Connect Illinois will seek to partner with such vendors for Illinois' data validation. In-kind support letters are attached as a demonstration of the types of support Connect Illinois has received from vendors.

Total outreach costs are projected at \$128,328: \$53,818 from federal sources, \$10,346 from the state of Illinois and \$64,164 estimated to be contributed in-kind from third-party vendors. All outreach costs include a 4% annual inflation adjustment.

Indirect Cost: Indirect costs are included at a rate of 30%. These indirect costs included over the life of this grant are \$1,455,929. The amount requested from federal sources is \$1,139,950, \$173,100 from the state of Illinois, and \$142,879 to be contributed in-kind by Connect Illinois. Indirect costs are those that will be incurred for common or joint objectives and cannot readily be identified with a particular direct cost objective.

Connected Nation, as a principle in The Partnership for a Connected Illinois, Inc. will participate to the largest extent in the mapping and planning efforts for the state of Illinois. As such we are utilizing their proposed indirect cost rate. In compliance with OMB Circular A-122, Connected Nation's indirect costs include items, when not associated directly with a project, such as telecommunications; printing; rent; utilities; depreciation; insurance; postage; hardware and software costs; general administration and other general expense; personnel cost of

administrative, accounting and human resource employees; operation and maintenance expense; as well as grant compliance, grant financial reporting and auditing costs (when applicable).

Illinois' Planning Budget Narrative

Illinois' State Broadband Data and Development Program (SBDD) budget for broadband planning has been informed through a collaborative effort of The Partnership for a Connected Illinois, Inc. The budget has been developed by Connect Illinois using historical costs incurred on similar mapping projects with consideration given to the increased scope and timeline of the deliverables requested from the National Telecommunications and Information Administration (NTIA). Illinois' cost proposal will seek \$499,247 of federal grant funds for the 5-year planning project from NTIA for the benefit of the state of Illinois. A non-federal in-kind match will be provided from various sources of \$138,453 making the total SBDD planning project budget of \$637,700.

Planning	Federal	Non-Federal	Total
Personnel			
Broadband Planning Staff	\$ 104,275	\$ 73,423	\$ 177,698
Research Staff	44,834	-	44,834
Total Personnel	149,109	73,423	222,532
Fringe Benefits	37,277	23,494	60,771
Travel	16,433	-	16,433
Equipment	54,224	-	54,224
Supplies	7,385	-	7,385
Contractual	85,045	-	85,045
Other Line Items: Datasets	-	-	-
Other Line Items: Outreach	-	-	-
Indirect Cost	149,774	41,536	191,310
Total	\$ 499,247	\$ 138,453	\$ 637,700
 Percent of Total	 78.29%	 21.71%	

Personnel: Personnel costs primarily include a portion of Connect Illinois employees' time necessary to fill the following roles:

- Broadband Planning Staff
 - Project Manager
- Research Staff
 - Research Analyst

The average base salary of the positions listed above is approximately \$70,000 per year. In addition to those positions listed above, other Connect Illinois employees may also be included as needed to fulfill the requirements of the grant. Personnel costs would account for nearly 800 personnel hours annually to provide the necessary long-term staff to facilitate Illinois' broadband planning efforts.

The total personnel costs are \$222,532: \$149,109 from federal sources and \$73,423 as an in-kind contribution from Southern Illinois University (SIU). Personnel costs include a 4% cost of living adjustment annually with the exception of SIU and Illinois' contributions which includes a 5% annual adjustment.

Fringe Benefits: Fringe benefits are estimated to be 25% of the total personnel costs. The cost of fringe benefits included over the life of this grant are \$60,771. The amount requested from federal sources is \$37,277 with \$23,494 provided as an in-kind match from SIU calculated at 32% of personnel costs.

Travel: Travel costs are comprised of mileage, meals, airfare, and hotel accommodation, as well as rental car and associated fuel costs necessary to meet the requirements of the NOFA. Other miscellaneous travel costs may also be included in this category, as needed. Mileage costs would be paid at the applicable standard federal rate; meal costs are estimated at \$45 per day based on the current standard federal per diem rate; airfare costs are based on an average of \$500 per round-trip flight; hotel costs are based on an average of \$200 per night; and rental car and associated fuel costs are based on an average of \$90 per day. All travel costs include a 4% annual inflation adjustment. The total travel costs are projected to be \$16,433, all paid from federal sources.

Equipment: Equipment for the planning project includes a portion of the total cost of Broadband STAT (initial cost and annual maintenance) which is a comprehensive mapping and planning tool for states to manage broadband stimulus projects and activities through the ARRA. The initial cost of Broadband STAT is \$60,000 and the annual maintenance cost is \$15,000. Approximately 37% of that cost is included in the planning budget for a project total of \$45,768. In addition, the equipment budget provides for \$2,500 for each Full-Time Equivalent (FTE) per year for that employee's equipment needs. The total equipment costs are projected to be \$54,224, all paid from federal sources. All equipment costs include a 4% annual inflation adjustment.

Supplies: Supply costs include, but are not limited to, office supplies and office expense costs as well as costs for postage, printing, telephone and other similar items directly related to the implementation of this program. The supplies budget includes an initial amount of \$4,850 for each FTE for small equipment as well as \$250 per month per FTE for office supplies, small

equipment replacement cost or other necessary costs as detailed above or project specific miscellaneous cost. The total supply costs are projected to be \$7,385, all paid from federal sources. Annual supply costs include a 4% annual inflation adjustment.

Contractual: Contractual costs include a portion of the research surveys and research consultant costs and are necessary to provide consistent and relevant market intelligence needed to inform the broadband planning efforts. Annual research survey costs are estimated at \$42,460. Approximately 35% of the survey cost is included in the planning budget for a project total of \$80,490. In addition a research consultant will provide services over the life of the project totaling \$4,555.

The total contractual costs are \$85,045, all paid from federal sources. All contractual costs include a 4% cost of living adjustment annually.

Indirect Cost: Indirect costs are included at a rate of 30%. These indirect costs included over the life of this grant are \$191,310. The amount requested from federal sources is \$149,774 with an amount projected of \$41,536 to be contributed in-kind by Connect Illinois. Indirect costs are those that will be incurred for common or joint objectives and cannot readily be identified with a particular direct cost objective.

Connected Nation, as a principle in The Partnership for a Connected Illinois, Inc. will participate to the largest extent in the mapping and planning efforts for the state of Illinois. As such we are utilizing their proposed indirect cost rate. In compliance with OMB Circular A-122, Connected Nation's indirect costs include items, when not associated directly with a project, such as telecommunications; printing; rent; utilities; depreciation; insurance; postage; hardware and software costs; general administration and other general expense; personnel cost of administrative, accounting and human resource employees; operation and maintenance expense; as well as grant compliance, grant financial reporting and auditing costs (when applicable). Please refer to the mapping budget narrative for substantiation of Connected Nation's indirect cost rate.



OFFICE OF THE GOVERNOR

SPRINGFIELD, ILLINOIS 62706

Pat Quinn

GOVERNOR

July 28, 2009

Lawrence E. Strickling
Assistant Secretary for Communications and Information
Administrator, National Telecommunications and Information Administration
U.S. Department of Commerce
1401 Constitution Ave, N.W.
Washington, D.C. 20230

Dear Secretary Strickling:

I am writing to you regarding the State Broadband Data and Development Program and the Broadband Data Improvement Act administered by the U.S. Department of Commerce, National Telecommunication Information Administration (NTIA).

Pursuant to Public Law 110-385, the Broadband Data Improvement Act, the State of Illinois hereby designates the Partnership for a Connected Illinois as the single eligible entity in Illinois to receive a grant under the State Broadband Data & Development Grant Program.

The State Broadband Data and Development Grant Program is based on a concept of statewide broadband initiatives that Illinois has adopted and initiated. Under the authority of Public Act 95-684, the Illinois Department of Commerce and Economic Opportunity (DCEO) selected the Partnership for a Connected Illinois to implement a comprehensive, statewide broadband deployment strategy and demand creation initiative. The purpose of this strategy is to encourage and support the partnership of the public and private sectors in the continued growth of broadband for the State's residents and businesses.

We look forward to the work of Connect Illinois in accelerating the deployment and adoption of broadband throughout Illinois. I respectfully encourage you and your staff to contact me or my staff, Ryan Croke at 217-557-3508 or ryan.croke@illinois.gov if you have any questions or need more information.

Sincerely,

A handwritten signature in black ink that reads "Pat Quinn".

Pat Quinn
Governor

Applicants should also review the instructions for certification included in the regulations before completing this form. Signature on this form provides for compliance with certification requirements under 15 CFR Part 28, 'New Restrictions on Lobbying.' The certifications shall be treated as a material representation of fact upon which reliance will be placed when the Department of Commerce determines to award the covered transaction, grant, or cooperative agreement.

LOBBYING

As required by Section 1352, Title 31 of the U.S. Code, and implemented at 15 CFR Part 28, for persons entering into a grant, cooperative agreement or contract over \$100,000 or a loan or loan guarantee over \$150,000 as defined at 15 CFR Part 28, Sections 28.105 and 28.110, the applicant certifies that to the best of his or her knowledge and belief, that:

(1) No Federal appropriated funds have been paid or will be paid, by or on behalf of the undersigned, to any person for influencing or attempting to influence an officer or employee of any agency, a Member of Congress in connection with the awarding of any Federal contract, the making of any Federal grant, the making of any Federal loan, the entering into of any cooperative agreement, and the extension, continuation, renewal, amendment, or modification of any Federal contract, grant, loan, or cooperative agreement.

(2) If any funds other than Federal appropriated funds have been paid or will be paid to any person for influencing or attempting to influence an officer or employee of any agency, a Member of Congress, an officer or employee of Congress, or an employee of a member of Congress in connection with this Federal contract, grant, loan, or cooperative agreement, the undersigned shall complete and submit Standard Form-LLL, 'Disclosure Form to Report Lobbying,' in accordance with its instructions.

(3) The undersigned shall require that the language of this certification be included in the award documents for all subawards at all tiers (including subcontracts, subgrants, and contracts under grants, loans, and cooperative agreements) and that all subrecipients shall certify and disclose accordingly.

This certification is a material representation of fact upon which reliance was placed when this transaction was made or entered into. Submission of this certification is a prerequisite for making or entering into this transaction imposed by section 1352, title 31, U.S. Code. Any person who fails to file the required certification shall be subject to a civil penalty of not less than \$10,000 and not more than \$100,000 for each such failure occurring on or before October 23, 1996, and of not less than \$11,000 and not more than \$110,000 for each such failure occurring after October 23, 1996.

As the duly authorized representative of the applicant, I hereby certify that the applicant will comply with the above applicable certification.

Statement for Loan Guarantees and Loan Insurance

The undersigned states, to the best of his or her knowledge and belief, that:

In any funds have been paid or will be paid to any person for influencing or attempting to influence an officer or employee of any agency, a Member of Congress, an officer or employee of Congress, or an employee of a Member of Congress in connection with this commitment providing for the United States to insure or guarantee a loan, the undersigned shall complete and submit Standard Form-LLL, 'Disclosure Form to Report Lobbying,' in accordance with its instructions.

Submission of this statement is a prerequisite for making or entering into this transaction imposed by section 1352, title 31, U.S. Code. Any person who fails to file the required statement shall be subject to a civil penalty of not less than \$10,000 and not more than \$100,000 for each such failure occurring on or before October 23, 1996, and of not less than \$11,000 and not more than \$110,000 for each such failure occurring after October 23, 1996.

*** NAME OF APPLICANT**

The Partnership for a Connected Illinois

*** AWARD NUMBER**

0660-ZA29

*** PROJECT NAME**

IL Broadband Data & Development Grant

Prefix: [] * First Name: Ronald Middle Name: []

* Last Name: Duncan Suffix: []

* Title: President

* SIGNATURE: Ronald Duncan

* DATE: 08/14/2009

DISCLOSURE OF LOBBYING ACTIVITIES

Complete this form to disclose lobbying activities pursuant to 31 U.S.C.1352

Approved by OMB

0348-0046

1. * Type of Federal Action: <input type="checkbox"/> a. contract <input checked="" type="checkbox"/> b. grant <input type="checkbox"/> c. cooperative agreement <input type="checkbox"/> d. loan <input type="checkbox"/> e. loan guarantee <input type="checkbox"/> f. loan insurance	2. * Status of Federal Action: <input type="checkbox"/> a. bid/offer/application <input checked="" type="checkbox"/> b. initial award <input type="checkbox"/> c. post-award	3. * Report Type: <input checked="" type="checkbox"/> a. initial filing <input type="checkbox"/> b. material change
--	--	--

4. Name and Address of Reporting Entity:

Prime SubAwardee

* Name:

* Street 1: Street 2:

* City: State: Zip:

Congressional District, if known:

5. If Reporting Entity in No.4 is Subawardee, Enter Name and Address of Prime:

6. * Federal Department/Agency: <input type="text" value="Department of Commerce"/>	7. * Federal Program Name/Description: <input type="text"/> CFDA Number, if applicable: <input type="text"/>
---	---

8. Federal Action Number, if known: <input type="text" value="0060-ZA29"/>	9. Award Amount, if known: \$ <input type="text"/>
--	--

10. a. Name and Address of Lobbying Registrant:

Prefix * First Name Middle Name

* Last Name Suffix

* Street 1 Street 2

* City State Zip

b. Individual Performing Services (including address if different from No. 10a)

Prefix * First Name Middle Name

* Last Name Suffix

* Street 1 Street 2

* City State Zip

11. Information requested through this form is authorized by title 31 U.S.C. section 1352. This disclosure of lobbying activities is a material representation of fact upon which reliance was placed by the tier above when the transaction was made or entered into. This disclosure is required pursuant to 31 U.S.C. 1352. This information will be reported to the Congress semi-annually and will be available for public inspection. Any person who fails to file the required disclosure shall be subject to a civil penalty of not less than \$10,000 and not more than \$100,000 for each such failure.

* Signature:

* Name: Prefix * First Name Middle Name

* Last Name Suffix

Title: Telephone No.: Date:

Federal Use Only: Authorized for Local Reproduction
Standard Form - LLL (Rev. 7-97)

ASSURANCES - NON-CONSTRUCTION PROGRAMS

Public reporting burden for this collection of information is estimated to average 15 minutes per response, including time for reviewing instructions, searching existing data sources, gathering and maintaining the data needed, and completing and reviewing the collection of information. Send comments regarding the burden estimate or any other aspect of this collection of information, including suggestions for reducing this burden, to the Office of Management and Budget, Paperwork Reduction Project (0348-0040), Washington, DC 20503.

PLEASE DO NOT RETURN YOUR COMPLETED FORM TO THE OFFICE OF MANAGEMENT AND BUDGET. SEND IT TO THE ADDRESS PROVIDED BY THE SPONSORING AGENCY.

NOTE: Certain of these assurances may not be applicable to your project or program. If you have questions, please contact the awarding agency. Further, certain Federal awarding agencies may require applicants to certify to additional assurances. If such is the case, you will be notified.

As the duly authorized representative of the applicant, I certify that the applicant:

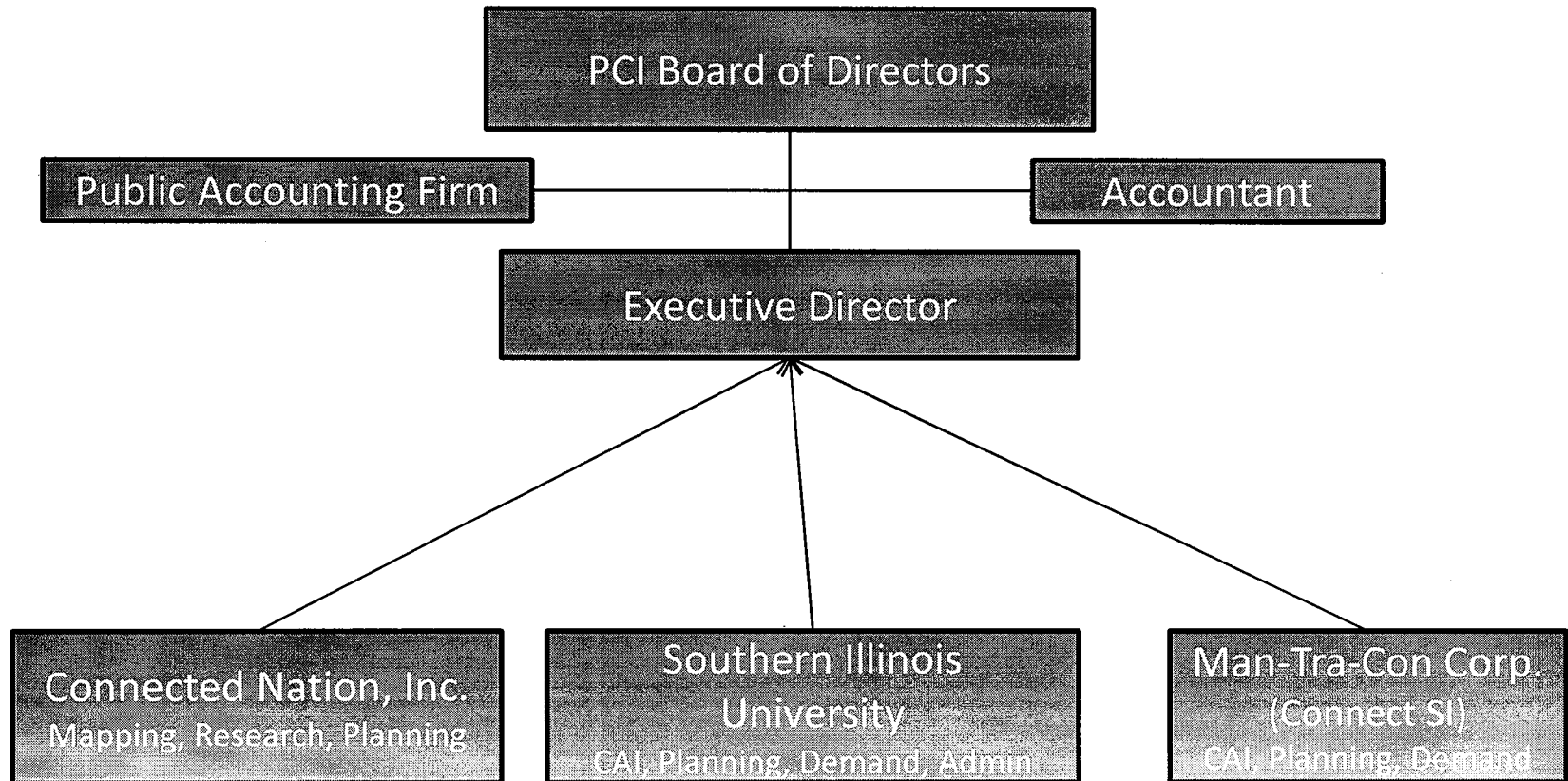
1. Has the legal authority to apply for Federal assistance and the institutional, managerial and financial capability (including funds sufficient to pay the non-Federal share of project cost) to ensure proper planning, management and completion of the project described in this application.
2. Will give the awarding agency, the Comptroller General of the United States and, if appropriate, the State, through any authorized representative, access to and the right to examine all records, books, papers, or documents related to the award; and will establish a proper accounting system in accordance with generally accepted accounting standards or agency directives.
3. Will establish safeguards to prohibit employees from using their positions for a purpose that constitutes or presents the appearance of personal or organizational conflict of interest, or personal gain.
4. Will initiate and complete the work within the applicable time frame after receipt of approval of the awarding agency.
5. Will comply with the Intergovernmental Personnel Act of 1970 (42 U.S.C. §§4728-4763) relating to prescribed standards for merit systems for programs funded under one of the 19 statutes or regulations specified in Appendix A of OPM's Standards for a Merit System of Personnel Administration (5 C.F.R. 900, Subpart F).
6. Will comply with all Federal statutes relating to nondiscrimination. These include but are not limited to: (a) Title VI of the Civil Rights Act of 1964 (P.L. 88-352) which prohibits discrimination on the basis of race, color or national origin; (b) Title IX of the Education Amendments of 1972, as amended (20 U.S.C. §§1681-1683, and 1685-1686), which prohibits discrimination on the basis of sex; (c) Section 504 of the Rehabilitation Act of 1973, as amended (29 U.S.C. §794), which prohibits discrimination on the basis of handicaps; (d) the Age Discrimination Act of 1975, as amended (42 U.S.C. §§6101-6107), which prohibits discrimination on the basis of age; (e) the Drug Abuse Office and Treatment Act of 1972 (P.L. 92-255), as amended, relating to nondiscrimination on the basis of drug abuse; (f) the Comprehensive Alcohol Abuse and Alcoholism Prevention, Treatment and Rehabilitation Act of 1970 (P.L. 91-616), as amended, relating to nondiscrimination on the basis of alcohol abuse or alcoholism; (g) §§523 and 527 of the Public Health Service Act of 1912 (42 U.S.C. §§290 dd-3 and 290 ee- 3), as amended, relating to confidentiality of alcohol and drug abuse patient records; (h) Title VIII of the Civil Rights Act of 1968 (42 U.S.C. §§3601 et seq.), as amended, relating to nondiscrimination in the sale, rental or financing of housing; (i) any other nondiscrimination provisions in the specific statute(s) under which application for Federal assistance is being made; and, (j) the requirements of any other nondiscrimination statute(s) which may apply to the application.
7. Will comply, or has already complied, with the requirements of Titles II and III of the Uniform Relocation Assistance and Real Property Acquisition Policies Act of 1970 (P.L. 91-646) which provide for fair and equitable treatment of persons displaced or whose property is acquired as a result of Federal or federally-assisted programs. These requirements apply to all interests in real property acquired for project purposes regardless of Federal participation in purchases.
8. Will comply, as applicable, with provisions of the Hatch Act (5 U.S.C. §§1501-1508 and 7324-7328) which limit the political activities of employees whose principal employment activities are funded in whole or in part with Federal funds.

9. Will comply, as applicable, with the provisions of the Davis-Bacon Act (40 U.S.C. §§276a to 276a-7), the Copeland Act (40 U.S.C. §276c and 18 U.S.C. §874), and the Contract Work Hours and Safety Standards Act (40 U.S.C. §§327-333), regarding labor standards for federally-assisted construction subagreements.
10. Will comply, if applicable, with flood insurance purchase requirements of Section 102(a) of the Flood Disaster Protection Act of 1973 (P.L. 93-234) which requires recipients in a special flood hazard area to participate in the program and to purchase flood insurance if the total cost of insurable construction and acquisition is \$10,000 or more.
11. Will comply with environmental standards which may be prescribed pursuant to the following: (a) institution of environmental quality control measures under the National Environmental Policy Act of 1969 (P.L. 91-190) and Executive Order (EO) 11514; (b) notification of violating facilities pursuant to EO 11738; (c) protection of wetlands pursuant to EO 11990; (d) evaluation of flood hazards in floodplains in accordance with EO 11988; (e) assurance of project consistency with the approved State management program developed under the Coastal Zone Management Act of 1972 (16 U.S.C. §§1451 et seq.); (f) conformity of Federal actions to State (Clean Air) Implementation Plans under Section 176(c) of the Clean Air Act of 1955, as amended (42 U.S.C. §§7401 et seq.); (g) protection of underground sources of drinking water under the Safe Drinking Water Act of 1974, as amended (P.L. 93-523); and, (h) protection of endangered species under the Endangered Species Act of 1973, as amended (P.L. 93-205).
12. Will comply with the Wild and Scenic Rivers Act of 1968 (16 U.S.C. §§1271 et seq.) related to protecting components or potential components of the national wild and scenic rivers system.
13. Will assist the awarding agency in assuring compliance with Section 106 of the National Historic Preservation Act of 1966, as amended (16 U.S.C. §470), EO 11593 (identification and protection of historic properties), and the Archaeological and Historic Preservation Act of 1974 (16 U.S.C. §§469a-1 et seq.).
14. Will comply with P.L. 93-348 regarding the protection of human subjects involved in research, development, and related activities supported by this award of assistance.
15. Will comply with the Laboratory Animal Welfare Act of 1966 (P.L. 89-544, as amended, 7 U.S.C. §§2131 et seq.) pertaining to the care, handling, and treatment of warm blooded animals held for research, teaching, or other activities supported by this award of assistance.
16. Will comply with the Lead-Based Paint Poisoning Prevention Act (42 U.S.C. §§4801 et seq.) which prohibits the use of lead-based paint in construction or rehabilitation of residence structures.
17. Will cause to be performed the required financial and compliance audits in accordance with the Single Audit Act Amendments of 1996 and OMB Circular No. A-133, "Audits of States, Local Governments, and Non-Profit Organizations."
18. Will comply with all applicable requirements of all other Federal laws, executive orders, regulations, and policies governing this program.

<p>* SIGNATURE OF AUTHORIZED CERTIFYING OFFICIAL</p> <p>Ronald Duncan</p>	<p>* TITLE</p> <p>President</p>
<p>* APPLICANT ORGANIZATION</p> <p>The Partnership for a Connected Illinois</p>	<p>* DATE SUBMITTED</p> <p>08/14/2009</p>

Standard Form 424B (Rev. 7-97) Back

CONNECT ILLINOIS ORG CHART



Illinois Follow-Up Questions

1. In the introduction, you state that “PCI has selected the name of *Connect Illinois* to designate this partnership and will operate in the State of Illinois as *Connect Illinois*.” By operate, do you mean that you will create a non-profit organization or simply that this project is named “Connect Illinois”.
2. Please clearly identify the roles of each of the partners in this project. It is unclear what Connect SI and Man-Tra-Con will be responsible for in this project.
3. Please provide additional information about how Connect Illinois will coordinate planning efforts in conjunction with the state agencies listed on page 33. What is the Connect Illinois Broadband Resource Development Consortium (BRDC)? This is not listed until the last paragraph of planning section, but appears to have a significant impact on the proposal.
4. Please describe the work that was undertaken by the partnership between March and July. If the partnership was created pursuant to a state law, was any funding available for this or was the competitive RFP created solely in anticipation of the SBDD Program NOFA?

Data Collection:

Methodology:

1. How did you arrive at your number of estimated broadband providers?
2. Please provide an example of how CN implements the following activity “working directly with each provider on the ground to understand what technology has been deployed and how data is stored....Connected Nation then helps providers to gather and/or identify data, contextualize the data in accordance with geography and topography and translate these data into a GIS format.”
3. In the text discussing network information collection, does the language, “any limited network information” suggest that many providers will have only a limited knowledge about the location of the infrastructure? If so, how is that data collected?
4. Please explain whether the “strategy for each provider and platform to determine how to translate any limited network information into preliminary GIS format” is separate from the work mentioned in the previous paragraph (“Connected Nation then helps providers to gather and/or identify data, contextualize the data in accordance with geography and topography and translate these data into a GIS format.”)
5. The application references “Connected Nation local consumer and business surveys”. Is this the same survey referenced in the budget narrative(s)? How has CN determined which communities these surveys will target? If not, how will this be determined? Please provide additional information regarding staff expertise in this area.
6. What is meant by the statement “implement corrective actions” in the example provided that describes what will happen when CN identifies a discrepancy between data provided by providers and data collected through field tests?
7. Please explain how speed tests are conducted from the field.

8. Please name the specific state agencies with which Connected Nation plans to work in order to collect the Community Anchor Institution data, if not already explicitly stated in the Application. What role, if any, will the State of Illinois or the other partners have in this process?
9. What is meant by “open access” in reference to Broadband STAT? Is this an open source tool? Open data repository?
10. Please provide additional description of the type and format of metadata that you will provide.

Type of Data to be Collected:

1. Please clarify whether you are planning to request data from providers at the address or census block/street segment level. If you are requesting data at the address level, please explain your anticipated action(s) if providers are unwilling to provide data at the address level?
2. Please clarify your intent to collect last-mile and middle-mile data, as specified in the NOFA and subsequent Clarification. The text currently states that you “will gather data on middle-mile and backbone interconnection points directly from providers to the extent necessary for producing the required data and for verification purposes, in accordance with the NOFA and its clarification.”
3. Since CN is creating each State’s broadband availability dataset as part of this project, we are unclear what is meant by the following sentence, “Such information will complement datasets obtained by Connected Nation, such as the state’s broadband availability inventory...” Please clarify.
4. Please clarify that Connected Nation will provide a complete set of Community Anchor Institution availability data to NTIA, as required by the NOFA.

Verification:

1. As described in the Frequently Asked Questions found [here](#), since CN will be conducting verification itself, what measures will you take to meet the requirement that, “the process is executed in a manner that minimizes the likelihood of a conflict of interest.”
2. Please provide a copy of past surveys that have been implemented by CN and describe how the population included in the survey was chosen.

*v:

provide a list of the types of maps that CN currently contemplates producing for you.

provide more detail about the type of potential confidentiality constraints mentioned in the disclosure of Community Anchor Institution data.

what where the application states that that the CN site “will serve as the public interactive broadband inventory map, downloadable maps, complementary information provided to the public the underlying non-confidential data supporting the

additional information about how CN provides “full public disclosure from the federal officials....of the type and form of data that CN [project] will

Confidentiality and Non-Disclosure:

1. In the section on Security and Confidentiality, you state that “the data that is protected via non-disclosure agreements is limited to highly sensitive network infrastructure information...[and] the NDAs also protect the confidentiality of provider specific data.” What is meant by “provider specific data” and how will you ensure that your NDA conforms with the confidentiality requirements set forth in the NOFA and subsequent Clarifications? Please list the specific confidentiality provisions that will be included to ensure compliance with the SBDD NOFA and subsequent clarifications.

Security:

1. Please provide additional information about how you will secure sensitive data that may have potential state/national security implications. For example, do you have agreements in place to work with the State Department of Homeland Security .

Project Feasibility:

Applicant Capabilities:

General Budget:

1. If much of the verification work involves field testing, please explain why “costs associated with reliable data validation efforts are largely independent of state size or the number of broadband providers.”

Budget Descriptions:

1. Please provide further detail as to the matching funds that will be provided. In particular, please be sure to describe the role of any data sets or people in the project.
2. Please include additional information about the work that the consultants that you hire will perform.
3. Does The Partnership for a Connected Illinois currently hold an indirect rate with another federal agency? If so, please provide documentation.
4. *BB Planning and Mapping Budgets and Narratives:*
Please provide additional detail to the budget spreadsheets and narratives such that the information below is completed for the first two years of your proposed budget. Please retain a separate budget narrative and spreadsheet for mapping and planning. A sample is attached to this email. At this point it is not necessary to complete the first tab as you have submitted an updated SF-424.

Your budget narrative should provide narrative detail (such as description of position or calculation of travel costs), while your revised spreadsheet should include detail for all budget areas. Please ensure that you continue to detail the differences in costs between years one and two. We have attached a spreadsheet that you may use as a guide to delineate this information

in a spreadsheet format. If your budget already provides the information needed for the tabs "Detailed Mapping Budget," "Detailed Planning Budget," "Contracts Budget," please still complete the "Overview" tab.

Narrative Information:

Personnel Salaries: For each position allocated to the projects, provide a description of the position responsibilities, annual salary, and percentage of time dedicated to this project for Year 1 and Year 2. Please ensure that costs are clear for both Years 1 and 2, as opposed to both years cumulatively. Be sure to clearly indicate if a portion of time is paid through an in-kind match (i.e. clear federal vs. match distinction)

Personnel Fringe Benefits: For each position allocated to the projects, provide the cost for fringe benefits, if available.

Travel: Provide additional information such that the basis for all figures is clear. For example, if assuming airplane travel, provide an estimate cost for each roundtrip ticket and how many trips are expected. For mileage, provide an estimate of how many miles are expected and how many trips, etc. Be sure to distinguish between federal funds and any matching funds.

Equipment: For hardware costs, provide a detailed description of all equipment to be purchased, when it will be purchased in the first two years, and the basis for the figures used. Be sure to distinguish between federal funds and any matching funds.

Materials/Supplies:

- For software costs, provide a detailed description of all equipment to be purchased, when they will be purchased in the first two years, and the basis for the figures used. Be sure to distinguish between federal funds and any matching funds.
- For all supplies expected to be purchased, please provide the information such that the basis for figures is clear. Be sure to distinguish between federal funds and any matching funds.

Subcontracts: For any significant subcontract, please provide the cost allocation in a format similar to the one listed directly above. Your current contractor budget only allocates personnel hours. If the contractor will be purchasing any equipment, performing any travel, etc. that should be clearly delineated.

Other: For training purposes not related to travel, please describe in detail and provide a calculation of the cost. For other activities or existing data sets, provide the value and calculation of such value. Be sure to distinguish between federal funds and any matching funds.

Indirect Cost: (Administrative Overhead) Please provide a clear description of the costs attributed to administrative overhead.

NOTE: Any requested pre-award costs should be allocated to the respective categories above. Be sure to indicate whether something is a pre-award cost.

Applicant Capacity, Knowledge, and Experience:

1. As described in the NOFA, please provide a description of the knowledge and experience of the applicant and associated project personnel. If you have not yet hired for certain positions please provide a description of the qualifications and expected work activities for these positions.
2. If any of the private sector stakeholders listed in "Applicant Capacity, Knowledge and Experience" will be specifically contributing to any of these programs, please describe.

Expedient Data Delivery:

1. The Accuracy and Verification section of the application mentions that "Connected Nation" conducts extensive field tests and "statistical telephone surveys," but the timeline for activity does not make clear when and how these activities will be conducted. Please provide additional detail regarding the timing and the investment of staff resources.
2. Please describe when the data validation processes, including survey work, will occur in the sample plans provided.
3. Please describe why the timeline appears to be substantially similar for states in which you have mapped broadband before and for the states in which you have not. For example, do you estimate that it will take the same amount of time to reach out to providers in states that have already created broadband maps as it will in states where mapping work is just beginning?

Process for Repeated Data Updating

1. The application states that the maps will be updated on a "routine basis". Please provide further detail.
2. In the section describing security and confidentiality, the narrative states that there are multiple levels of disaggregation available, but no mention of street segment information is made. Will CN collect and publicly display street segment information for census blocks greater than two square miles, as required in the NOFA and its clarifications?

Collaboration and Planning:

Collaboration

1. Please explain how the proposed in-kind data sets are valued and how they will be utilized within the project.

Planning:

1. Please provide additional information about the activities and outputs, and costs associated with those activities and outputs for the request for broadband planning funds.

2. What specific outcomes are expected from these activities?



**CONNECTED
NATIONSM**

WWW.CONNECTEDNATION.ORG

444 NORTH CAPITOL ST
SUITE 224
WASHINGTON, DC 20001

1-877-846-7710

August 13, 2009

Mr. Ronald Duncan
President
The Partnership for a Connected Illinois
Shawnee Community College
8364 College Road
Ullin, IL 62992

Dear Ron,

This letter is to confirm that Connected Nation will forgo our indirect cost rate on non-cash in-kind match contributed for the Illinois mapping project. This represents a total of \$142,879 over the five-year project.

In addition, Connected Nation will forgo our indirect cost rate on non-cash in-kind match contributed for the Illinois planning project. This represents a total of \$41,536 over the five-year project.

Sincerely,

Brian Mefford
Chairman & CEO

AGREEMENT

This Agreement is intended to set forth the terms of an understanding between the Board of Trustees of Southern Illinois University, governing Southern Illinois University, a body politic and corporate of the State of Illinois, hereafter called the "University," and The Partnership for a Connected Illinois, Incorporated, an Illinois not-for-profit corporation having its principal offices at 150 East Pleasant Hill Road in Carbondale, Illinois, hereafter referred to as "Partnership," for the purposes of advancing contemporary telecommunications including broadband Internet access throughout the State of Illinois and assisting similar projects throughout the state to meet the goal of full statewide connectivity.

WHEREAS, the University has an interest in such projects due to its support of regional and statewide economic and community development efforts, and especially those initiatives that leverage growth through accessible and affordable broadband Internet access; and

WHEREAS, the Partnership has received notification of tax exempt status from the Internal Revenue Service under Section 501(c)(3) of the Internal Revenue Code effective June 10, 2008; and,

WHEREAS, the Partnership has submitted a successful proposal for a comprehensive statewide broadband project entitled "Connect Illinois" to the Illinois Department of Commerce and Economic Opportunity; and,

WHEREAS, the Partnership has been organized for the purpose of managing, operating, and administering a fully funded statewide broadband initiative entitled Connect Illinois,

NOW THEREFORE, with these objectives and under these circumstances and in consideration of the mutual covenants herein set forth, the parties agree as follows:

1. The Partnership agrees to act as the agent of the University with respect to a statewide broadband initiative. As such, the Partnership will act on behalf of the University in the management and operation of a statewide broadband initiative in a manner consistent with the terms of this Agreement, the terms of existing agreements among the project partners, and such other terms as may be specified by the University.
2. The University shall transfer to the Partnership each year such funds as the parties may mutually determine to be necessary to support the activities of the Partnership; provided, however, that if the actual costs of providing services pursuant to this Agreement are less than the amounts so transferred, the Partnership will, at the end of each year or at such other time as may be specified by the University, refund the difference and any additional net income to the University. The Partnership agrees to make monthly accounting to the University of its income and expenses.
3. The University will assign to the Partnership a management entity who shall be employed by the University. All support staff reasonably required to assist the assigned manager in the performance of the manager's duties shall also be employed by Southern Illinois University and assigned to the Partnership. This assignment shall be on a year-to-year basis and shall be revocable by either the Partnership or the University upon three months notice to the other.

4. The parties agree that the Partnership is a University-Related Organization (URO) as defined by the Legislative Audit Commission Guidelines of the Illinois General Assembly. The relationship between the parties will be conducted in accordance with the Guidelines.
5. The parties agree that the Partnership will in all respects conduct itself and all of its duties and obligations under this Agreement in such a manner as to further the best interests of the University and the statewide broadband initiative. The terms of this Agreement shall be subject to modification at any time at the discretion of the University provided, however, that no such modification shall affect in any way the rights or the status of individuals or entities which have entered into other arrangements with the University in connection with the broadband initiative.
6. This Agreement shall not be assigned by the Partnership without the express written consent of the University.
7. The Partnership certifies that it has not been convicted of bribery or attempting to bribe an officer or employee of the State of Illinois nor has it made an admission of guilt of such conduct which is a matter of record. Further, the Partnership certifies that it has not been barred from contracting with a unit of state or local government as a result of a violation of Section 33E-3 or 33E-4 of the Criminal Code of 1961.
8. This agreement shall commence upon full execution of this agreement; provided, however, that the agreement shall automatically renew for successive one year periods unless terminated upon written notice from either party to the other within ninety (90) days of the end of any renewal period.

9. This Agreement expresses the entire agreement between the parties and no other agreements or representations either oral or written form any part of the agreement between the parties.

IN WITNESS WHEREOF, the parties have signed this Agreement on the 7th day of May, 2009.

BOARD OF TRUSTEES OF SOUTHERN ILLINOIS UNIVERSITY GOVERNING SOUTHERN ILLINOIS UNIVERSITY

THE PARTNERSHIP FOR A CONNECTED ILLINOIS, INC.

By: Roger Tedric

By: Ron Duncan
Ron Duncan, President
Board of Directors

Date: 5-7-09

Date: _____

Recommended:

Glenn Poshard
Glenn Poshard, President
Southern Illinois University

Duane Stucky
Duane Stucky, Senior Vice President for
Financial and Administrative Affairs
Southern Illinois University

Jerry Blakemore
Jerry Blakemore, General Counsel,
Southern Illinois University

STATE OF ILLINOIS MAPPING NARRATIVE

Personnel Salaries: For each position allocated to the projects, provide a description of the position responsibilities, annual salary, and percentage of time dedicated to this project for Year 1 and Year 2. Please ensure that costs are clear for both Years 1 and 2, as opposed to both years cumulatively.

Personnel for The Partnership for a Connected Illinois, Inc. (PCI) will be staffed through sub-contractors.

Travel: Provide additional information such that the basis for all figures is clear. For example, if assuming airplane travel, provide an estimated cost for each roundtrip ticket and how many trips are expected. For mileage, provide an estimate of how many miles are expected and how many trips, etc.

Travel costs for The Partnership for a Connected Illinois will be paid through sub-contractors.

Equipment: For hardware costs, provide a detailed description of all equipment to be purchased, when it will be purchased in the first two years, and the basis for the figures used.

The equipment needed for this project will be paid through sub-contractors.

Materials/Supplies:

- ***For software costs, provide a detailed description of all equipment to be purchased, when they will be purchased in the first two years, and the basis for the figures used.***
- ***For all supplies expected to be purchased, please provide the information such that the basis for figures is clear.***

Materials/Supplies

PCI expects to purchase \$5,000 of general office supplies in each of the two years of this project, all requested from federal sources.

Subcontracts: For any significant subcontract, please provide the cost allocation in a format similar to the one listed directly above. Your current contractor budget only allocates personnel hours. If the contractor will be purchasing any equipment, performing any travel, etc. that should be clearly delineated.

Subcontracts

Southern Illinois University

Southern Illinois University (SIU) will conduct research and provide mapping data that identifies the locations of health care institutions throughout the state as a part of the

Community Anchor Institution (CAI) body of research. In addition, SIU will provide project and grant management oversight.

Personnel Salaries: *For each position allocated to the projects, provide a description of the position responsibilities, annual salary, and percentage of time dedicated to this project for Year 1 and Year 2. Please ensure that costs are clear for both Years 1 and 2, as opposed to both years cumulatively.*

Personnel Salaries

Project & Grants Management Staff

Director of Community Development & Outreach and University Liaison to the Connect SI Initiative is responsible for the day-to-day operations of PCI as well as the overall project management and direction of this project. The incumbent provides direction and oversight to each of the three performing partners in this project. The annual salary for this position is projected to be \$68,964 for year 1 and \$72,412 for year 2. The annual salary for year 2 reflects a 5% Cost of Living adjustment. This position is projected to spend 2.5% of their time on this project with a salary cost of \$1,724 in year 1 and \$1,810 in year 2. Additionally, the incumbent had previously provided pre-award salary costs totaling \$2,874. This position will be provided in-kind by SIU.

Accounting Staff, position to be filled, will provide complex accounting services in support of the work of PCI including the development and maintenance of a grants compliance system. The employee will work closely with a private sector public accounting firm to ensure full not-for-profit reporting and implementation of federally-compliant accounting standards. The annual salary for this position is projected to be \$54,936 for year 1 and \$57,683 for year 2. The annual salary for year 2 reflects a 5% Cost of Living adjustment. The actual Year 2 amount will depend upon collective bargaining agreements. This position is projected to spend 100% of their time on this project with a salary cost of \$54,936 in year 1 and \$57,683 in year 2. This position will be funded from federal sources.

Community Anchor Institution Staff

Community Anchor Institution Researcher at Man-Tra-Con Corporation will conduct statewide research, including requisite travel and physical location as necessary, to identify municipal, county, state, federal and other anchor institutions excluding healthcare and education in Illinois. The incumbent will work closely with the Assistant Professor to ensure full alignment with the development of the datasets into one cohesive product. The annual salary for this position is projected to be \$40,000 per year in Year 1 and \$42,000 in Year 2. The annual salary in Year 2 reflects an estimated 5% increase.

Executive Director – Connect SI at Man-Tra-Con Corporation will provide statewide support for outreach and engagement with various community anchor institutions and dataset holder. The Executive Director has worked intensively with organizations that have built and currently hold excellent contemporary data. The Executive Director has allocated 7.5% of her time in Year 1 based on a salary of \$101,903, and 4.6% in Year 2 based on a salary of \$107,023.

Assistant Professor in the Department of Geography at Southern Illinois University Carbondale will conduct research and provide mapping data that identifies the locations of health care institutions throughout the state as a part of the CAI body of research. The incumbent along with graduate assistants will partner with Man-Tra-Con staff to fully develop the CAI component of the project. The annual salary for this position is projected to be \$85,812 for year 1 and \$90,103 for year 2. The annual salary for year 2 reflects a 5% Cost of Living adjustment. This position is projected to spend 8.33% of their time on this project with a salary cost of \$7,151 in year 1 and \$7,509 in year 2. This position will be funded from federal sources.

Graduate Assistant 1, along with the Assistant Professor, will conduct research and provide mapping data that identifies the locations of health care institutions throughout the state as a part of the CAI body of research. The annual salary for this position is projected to be \$32,160 for year 1 and \$33,768 for year 2. The annual salary for year 2 reflects a 5% Cost of Living adjustment. This position is projected to spend 37.5% of their time on this project with a salary cost of \$12,060 in year 1 and \$12,663 in year 2. This position will be funded from federal sources.

Graduate Assistant 2, along with the Assistant Professor, will conduct research and provide mapping data that identifies the locations of health care institutions throughout the state as a part of the CAI body of research. The annual salary for this position is projected to be \$33,768 for year 1 and \$35,456 for year 2. The annual salary for year 2 reflects a 5% Cost of Living adjustment. This position is projected to spend 8.33% of their time on this project with a salary cost of \$2,814 in year 1 and \$2,955 in year 2. This position will be funded from federal sources.

Personnel Fringe Benefits: For each position allocated to the projects, provide the cost for fringe benefits, if available.

Fringe Benefits

Fringe benefits are projected as a percentage of the personnel's annual salary as follows:

Project & Grants Management Staff

Director of Community Development & Outreach and University Liaison to the Connect SI Initiative's fringe benefit percentage is 32%, a cost of \$552 in year 1 and \$579 in year 2. Additionally, the incumbent had previously provided pre-award benefit costs totaling \$920. These benefits will be provided in-kind by SIU.

Accounting Staff's fringe benefit percentage is 32%, a cost of \$17,580 in year 1 and \$18,459 in year 2. These benefits will be funded from federal sources.

Community Anchor Institution Staff

Community Anchor Institution Researcher at Man-Tra-Con Corp. Community fringe benefit rate is a calculated charge utilized by Man-Tra-Con based on actual costs. Fringe benefit costs for Year 1 factor out to \$17,433 and for Year 2 at \$18,334.

Executive Director – Connect SI at Man-Tra-Con Corporation fringe benefit rate is a calculated charge utilized by Man-Tra-Con based on actual costs. Fringe benefit costs for Year 1 factor out to \$3,320 and for Year 2 at \$2,151.

Assistant Professor in the Department of Geography at Southern Illinois University Carbondale's fringe benefit percentage is 32%, a cost of \$2,288 in year 1 and \$2,403 in year 2. These benefits will be funded from federal sources.

Graduate Assistant 1 is provided a primary care fee as a benefit at a cost of \$199 in year 1 and \$209 in year 2. These benefits will be funded from federal sources.

Graduate Assistant 2 is provided a primary care fee as a benefit at a cost of \$46 in year 1 and \$48 in year 2. These benefits will be funded from federal sources.

Travel: Provide additional information such that the basis for all figures is clear. For example, if assuming airplane travel, provide an estimated cost for each roundtrip ticket and how many trips are expected. For mileage, provide an estimate of how many miles are expected and how many trips, etc.

The Project and Grant Management staff is projected to incur travel costs totaling \$2,000 in each project year, all requested from federal sources. This travel is expected to include compliance conferences and meetings to review and ensure compliance with federal standards. The figure is based on one trip to Washington DC each year at \$350 round trip airfare, room and board costs of \$500 over two nights, and mileage of 200 miles. The remainder allows for driving costs of approximately 1,800 miles to allow for driven statewide travel at \$.505/mile

The Assistant Professor is expected to incur in-state travel costs totaling \$1,188 in year 1 and \$1,224 in year 2, all requested from federal sources.

The Graduate Students are expected to incur in-state travel costs totaling \$3,260 in year 1 and \$3,358 in year 2, all requested from federal sources.

Equipment: For hardware costs, provide a detailed description of all equipment to be purchased, when it will be purchased in the first two years, and the basis for the figures used.

SIU expects to purchase \$5,000 of startup equipment in the first year of this project, all requested from federal sources. Included in these purchases will be the following:

- Desktop computer at \$2,300.00 to be purchased immediately
- Printer/Scanner/Fax at \$1200.00 to be purchased immediately
- Laptop Computer at \$1,500.00 to be purchased immediately

Materials/Supplies:

- ***For software costs, provide a detailed description of all equipment to be purchased, when they will be purchased in the first two years, and the basis for the figures used.***

- ***For all supplies expected to be purchased, please provide the information such that the basis for figures is clear.***

Materials/Supplies

Materials and supplies necessary for SIU to complete their portion of the CAI dataset, all requested from federal sources, are as follows:

- Census database at a cost of \$1,300 in year 1 and \$1,000 in year 2.
- Desktop computer at a cost of \$2,700 in year 1.
- External hard drive at a cost of \$300 in year 1.
- Postage cost of \$1,000 in year 1 and \$500 in year 2.
- Printing and duplication cost of \$200 in each project year.

Indirect

Southern Illinois University will provide in-kind indirect cost at a rate of 31% on the applicant share costs totaling \$2,727 in year 1 and \$1,073 in year 2.

The total direct cost requested from federal sources for SIU's CAI portion is \$34,506 in year 1 and \$32,069 in year 2. SIU requests indirect costs as a percentage of direct costs of 45.5% or \$15,700 in year 1 and \$14,591 in year 2. This rate is based on an existing agreement between the University and the U.S. Department of Health and Human Services. SIU does not request any indirect costs related to project and grants management as all costs are included as direct costs.

Applicant Capacity, Knowledge, and Experience:

1. ***As described in the NOFA, please provide a description of the knowledge and experience of the applicant and associated project personnel. If you have not yet hired for certain positions please provide a description of the qualifications and expected work activities for these positions.***

Rex Duncan, Director of Community Development & Outreach and University Liaison to the Connect SI initiative, has been involved with broadband connectivity issues since 2003. He currently serves as Director of Community Development and Outreach at Southern Illinois University. He also serves as University Liaison to the Connect SI initiative. Connect SI evolved out of a three-county project in southern Illinois headed by the Southern Illinois Coal Belt Champion Community, Inc., a 501(c)(3) non-profit providing economic and community development support in parts of Perry, Franklin, and Williamson Counties. Mr. Duncan is President of the Board of Directors of that organization. He served as the founding Executive Director of Connect SI. Mr. Duncan is also an elected city commissioner in Du Quoin, Illinois. In 2006 Mr. Duncan was recognized as a Leader Among Us by *Southern Business Journal*. Mr. Duncan has spoken extensively about Connect SI and the power of broadband Internet access on economic and community development. He was recently an invited speaker at the Delta Regional Authority Delta Leadership Institute in New Orleans. He was also a co-presenter at the Rural Telecon 2007 conference in Springfield, Illinois. He has testified on university

implications of broadband access before the Illinois House of Representatives Telecommunications Committee Subcommittee on Broadband Deployment. Mr. Duncan has an M.S.Ed. degree specializing in education, training, and development from Southern Illinois University and a B.S. Business degree from Eastern Illinois University.

Accounting Staff, position to be filled, must have a working knowledge of federal rules and regulations governing allowable and unallowable costs, and financial compliance and reporting as established by law and standards of the Office of Management and Budget (OMB) and the General Accounting Standards Board (GASB). The incumbent must be able to work professionally and knowledgeably with external accountants and auditors. The incumbent should have knowledge of accounting practices relevant to a not-for-profit corporation that is tax exempt under Section 501(c)(3) of the Internal Revenue Code. The incumbent must be able to apply technology-based solutions to accounting and compliance reporting.

Dr. Guangxing Wang, Assistant Professor in the Department of Geography at Southern Illinois University Carbondale, whose research interests focus on development and application of image processing, analysis, classification, image-based spatial simulation algorithms, and spatial uncertainty analysis methods for natural resources, ecological and environmental systems, especially human-environment interaction, vegetation disturbance, soil erosion, landscape and land degradation, global change and forest carbon. He has worked for many research projects and total grant funding is over \$2 million. The new algorithms he developed include local variability-based sampling, spatial variability-based up scaling, image-based spatial simulation, variogram-based optimal resolution determination, and polynomial regression-based spatial uncertainty budget. Dr. Wang is very productive in terms of publications and within the past five years he has had 25 articles published in peer-reviewed journals. Dr. Wang is a member of the American Society of Photogrammetry and Remote Sensing (ASPRS); the Institute of Electrical and Electronics Engineers (IEEE) Geoscience and Remote Sensing; Society of American Foresters (SAF); and International Union of Forestry Research Organization (IUFRO). Dr. Wang has reviewed proposals for National Science Foundation, U.S. Civilian Research & Development Foundation (CRDF) proposals, and South Carolina DoD/EPSCoR proposals. He is also a reviewer for many journals including Remote Sensing of Environment, IEEE Transactions on Geoscience and Remote Sensing, ASPRS Journal - Photogrammetric Engineering & Remote Sensing, International Journal of Remote Sensing, Environmental Management, Forest Science, Forest Ecology and Management, Journal of Terramechanics, and others. Dr. Wang will focus on healthcare and education institutions in Illinois. Dr. Wang holds a Ph.D. from the University of Helsinki, Finland.

Graduate Assistants 1 and 2 will be post-graduate students studying in the Geography and Environmental Resources program at Southern Illinois University Carbondale. Both will possess substantial Geographic Information Systems mapping training and some experience. They will also have significant skills in the area of dataset development and research. They will be hired by and under the direct supervision of Dr. Wang.

Total Southern Illinois University Costs

Total project costs related to Southern Illinois University's Community Anchor Institution work and project and grant management oversight are \$138,519 in year 1 (\$8,797 provided by SIU as an in-kind contribution and \$129,722 requested from federal sources) and \$128,264 in year 2 (\$3,462 provided by SIU as an in-kind contribution and \$124,802 requested from federal sources).

-- End of Southern Illinois University Mapping Section --

Man-Tra-Con Corp.

Man-Tra-Con Corp., the managing entity for the Connect SI project in the 20 southernmost counties of Illinois, will provide field level research and acquisition of key Community Anchor Institutions related to governmental and educational sites.

Personnel Salaries: For each position allocated to the projects, provide a description of the position responsibilities, annual salary, and percentage of time dedicated to this project for Year 1 and Year 2. Please ensure that costs are clear for both Years 1 and 2, as opposed to both years cumulatively.

Personnel Salaries

Community Anchor Institution Staff

Staff will conduct field level research and provide mapping data that identifies the locations of Community Anchor Institutions. The annual salary for this position is projected to be \$40,000 for year 1 and \$42,000 for year 2. This position is projected to spend 100% of their time on this project. This position will be funded from federal sources.

Personnel Fringe Benefits: For each position allocated to the projects, provide the cost for fringe benefits, if available.

Fringe Benefits

Fringe benefits are projected to be approximately 43.6% of the personnel's annual salary for a cost in year 1 of \$20,753 and a year 2 cost of \$20,485, all requested from federal sources.

Travel: Provide additional information such that the basis for all figures is clear. For example, if assuming airplane travel, provide an estimated cost for each roundtrip ticket and how many trips are expected. For mileage, provide an estimate of how many miles are expected and how many trips, etc.

The travel costs related to the CAI portion of the project are expected to be \$4,138 in year 1 and \$4,120 in year 2, all requested from federal sources.

Materials/Supplies:

- **For software costs, provide a detailed description of all equipment to be purchased, when they will be purchased in the first two years, and the basis for the figures used.**
- **For all supplies expected to be purchased, please provide the information such that the basis for figures is clear.**

Materials/Supplies

Materials and supplies necessary for Man-Tra-Con to complete their portion of the CAI dataset, all requested from federal sources, are as follows:

- Software fees at a cost of \$800 in year 1 and \$400 in year 2. This will permit the establishment of ArcView GIS service in Year 1 and service maintenance in Year 2.
- Equipment purchase at a cost of \$3,000 in year 1 to acquire a computer capable of performing the necessary functions inherent in this position.

Other

Man-Tra-Con anticipates incurring meeting costs totaling \$3,000 each year of the project, all requested from federal funds. The travel will involve primarily in-state driven travel to identify and map specific Community Anchor Institution locations.

Datasets: Illinois workNet system maintains a dataset that contains many of Illinois Community Anchor Institutions. In researching comparable databases and factoring in the supplemental costs associated with upkeep, we find the comparative value to be in excess of \$115,000 over a 5-year period of time. We believe this cost to be underestimated when taking into account the salaries issued to the lead administrative programmer and lower level programmers. However, in conversation with Illinois workNet officials, we have been assured that the release of datasets and/or transfer of datasets to various service-specific system maps should not be labor intensive. In further discussion it was noted that whatever additional data we may provide would be geo-coded and therefore non-problematic as well. This suggested value in no way reflects neither the entire value of the Illinois workNet system nor any prorata share of such value. The total in-kind contribution related to these datasets is \$23,000 in each year of the project.

Applicant Capacity, Knowledge, and Experience:

2. **As described in the NOFA, please provide a description of the knowledge and experience of the applicant and associated project personnel. If you have not yet hired for certain positions please provide a description of the qualifications and expected work activities for these positions.**

Ms. Kathy Lively, Connect SI, Executive Director & CEO, Man-Tra-Con, Inc., originally served in the Connect SI initiative as a co-chair of the Greater Egypt Community of Interest (COI). In 2006 Ms. Lively was recognized as a Leader Among Us by *Southern Business Journal* and in 2008 as an Inspiring Woman of Achievement in southern Illinois. She is a graduate of the Delta Regional Authority Leadership Institute and is active on many regional economic development boards and chambers of commerce. She is recognized

throughout the region for her dynamic leadership, organization, and project management skills. She and the Man-Tra-Con staff have brought millions of state and federal dollars to the region to support a host of workforce enhancement projects. Ms. Lively is a sought-after speaker on topics of leadership and motivation. Ms. Lively has an M.S.Ed. degree specializing in workforce education and development and a B.A. English degree both from Southern Illinois University.

Community Anchor Institution Researcher will require a person with significant training and experience in Geographic Information Systems mapping and dataset development. The person hired to perform this job will also be expected to create GPS-based datasets of exact locations of specific community anchor institutions throughout the state. The person hired will be required to have working knowledge of both ArcView GIS and ESRI-based GIS mapping software. The position will require extensive travel throughout the State of Illinois.

Total Man-Tra-Con Costs

Total project costs related to Man-Tra-Con's Community Anchor Institution work are \$102,314 in year 1 (\$23,000 provided as an in-kind contribution and \$79,314 requested from federal sources) and \$97,951 in year 2 (\$23,000 provided as an in-kind contribution and \$74,951 requested from federal sources).

-- End of Man-Tra-Con Mapping Section --

Connect Nation Mapping

Personnel Salaries: For each position allocated to the projects, provide a description of the position responsibilities, annual salary, and percentage of time dedicated to this project for Year 1 and Year 2. Please ensure that costs are clear for both Years 1 and 2, as opposed to both years cumulatively.

Personnel Salaries

Unless otherwise specifically stated, personnel costs are requested from federal sources.

GIS Staff

Manager, GIS Services is responsible for leading in the development and utilization of Geographic Information System techniques to provide a better understanding of certain variables in a given geographic location, extracting data from GIS software and using varying analysis methods to arrive at results and provide maps and datasets to Connected Nation's internal and external stakeholders. In addition, this position will provide direct supervision to the GIS Analyst positions. The annual salary for this position is projected to be \$55,000 for year 1 and \$57,200 for year 2. The annual salary for year 2 reflects a 4% Cost of Living adjustment. This position is projected to spend 10% of their time on this project with a salary cost of \$5,500 in year 1 and \$5,720 in year 2.

GISP1, position to be filled, is responsible for leading in the development and utilization of Geographic Information System techniques to provide a better understanding of certain variables in a given geographic location, extracting data from GIS software and using varying analysis methods to arrive at results and provide maps and datasets to Connected Nation's internal and external stakeholders. In addition, this position will provide direct supervision to the GIS Analyst positions. The annual salary for this position is projected to be \$49,500 for year 1 and \$51,480 for year 2. The annual salary for year 2 reflects a 4% Cost of Living adjustment. This position is projected to spend 100% of their time on this project with a salary cost of \$49,500 in year 1 and \$51,480 in year 2.

GIS Director, position to be filled, is responsible to manage the day-to-day operations of the GIS Services group to ensure the timely and accurate production of CN Mapping deliverables. In addition, the Director establishes and implements business objectives and strategies to meet Connected Nation objectives that include; recommend, develop, and implement new GIS systems, programs and processes that improve work efficiencies and data integrity and develop and monitor industry and internal benchmarks to measure continuous improvements in GIS system performance. The annual salary for this position is projected to be \$77,000 for year 1 and \$80,080 for year 2. The annual salary for year 2 reflects a 4% Cost of Living adjustment. This position is projected to spend 10% of their time on this project with a salary cost of \$7,700 in year 1 and \$8,008 in year 2.

Provider Manager 2, position to be filled, is responsible for developing and maintaining a trusted and collaborative relationship with providers equally ensuring their data availability and accuracy and their cooperation to the extent that he/she can affect it. In addition, this position will assist with the coordination and production of state-by-state mapping projects as needed. The annual salary for this position is projected to be \$35,200 for year 1 and \$36,608 for year 2. The annual salary for year 2 reflects a 4% Cost of Living adjustment. This position is projected to spend 30% of their time on this project with a salary cost of \$10,560 in year 1 and \$10,982 in year 2.

Stakeholder Relations Staff

Director, Government Affairs, is responsible for policy advocacy and relationship development at both the federal and state levels, in coordination with the public policy team and state operations team. This position develops and maintains productive relationships with relevant federal agencies/officials and within the states where Connected Nation operates to effectuate collaborative and grassroots-driven policy advocacy. The Director, Government Affairs will work with federal, state, and local stakeholders in the State Broadband Data and Development Grant program to foster a collaborative environment for broadband mapping and data sharing, specifically through engagement of state and local officials and other interested parties to address feedback, concerns, suggestions, and needs throughout the execution of data gathering and mapping. The annual salary for this position is projected to be \$103,400 for year 1 and \$107,536 for year 2. The annual salary for year 2 reflects a 4% Cost of Living adjustment. This position is projected to spend 2.5% of their time on this project with a salary cost of \$2,585 in year 1 and \$2,688 in year 2.

Director, Policy Development is responsible for developing the public policy positions of Connected Nation in collaboration with national, state, and local stakeholders, and in

coordination with the government affairs team, research team, and state operations team. The Director, Public Policy will work with national, state, and local stakeholders in the State Broadband Data and Development Grant program to foster a collaborative environment for broadband mapping and data sharing, specifically through outreach and relationship management with broadband providers to effectuate nondisclosure agreements and at least semiannual data transfer. The annual salary for this position is projected to be \$128,040 for year 1 and \$133,162 for year 2. The annual salary for year 2 reflects a 4% Cost of Living adjustment. This position is projected to spend 2.5% of their time on this project with a salary cost of \$3,201 in year 1 and \$3,329 in year 2.

Manager, Research & Policy Communications, is responsible for the production of research and policy-related materials and events in collaboration with national, state, and local stakeholders, and in coordination with the communications team, government affairs team, public policy team, and research team. The Manager, Research & Policy Communications will work with national, state, and local stakeholders in the State Broadband Data and Development Grant program to support a collaborative environment for broadband mapping and data sharing through the production of relevant and timely materials, programs, and information related to the grant program. The annual salary for this position is projected to be \$47,300 for year 1 and \$49,192 for year 2. The annual salary for year 2 reflects a 4% Cost of Living adjustment. This position is projected to spend 2.5% of their time on this project with a salary cost of \$1,183 in year 1 and \$1,230 in year 2.

Engineering

Director, Engineering & Technical Services, will provide wireless engineering support for Connected Nation and its subsidiaries as it relates to wireless broadband deployment. The Director, Engineering & Technical Services will oversee the on-the-ground data collection and verification work specifically related to providers. They primarily work with the fixed wireless providers that often do not have engineering departments and thus are unable to provide the type of data necessary to accurately depict where their broadband services are available. The Director, Engineering & Technical Services will also provide additional support where necessary with other broadband providers with whom their individual expertise is deemed helpful in the data collection. The annual salary for this position is projected to be \$99,000 for year 1 and \$102,960 for year 2. The annual salary for year 2 reflects a 4% Cost of Living adjustment. This position is projected to spend 7.7% of their time on this project with a salary cost of \$7,623 in year 1 and \$7,928 in year 2.

Technical Engineering Analyst, will provide wireless engineering support for Connected Nation and its subsidiaries as it relates to wireless broadband deployment. In addition, this position will work in conjunction with local state teams where Connected Nation is engaged, to determine creative ways to utilize current spectrum available to state government and related entities. The annual salary for this position is projected to be \$69,300 for year 1 and \$72,072 for year 2. The annual salary for year 2 reflects a 4% Cost of Living adjustment. This position is projected to spend 50% of their time on this project with a salary cost of \$34,650 in year 1 and \$36,036 in year 2.

Research

Chief Policy Officer, is an executive management position that provides vision and leadership for the direction of Connected Nation's policy and research strategy and execution. This position is responsible for overseeing the development, advocacy, and communication of research-based public policy in collaboration with stakeholders at the national, state, and local levels. In addition, the Chief Policy Officer oversees development of the guidelines, content, and integrity of Connected Nation's research. The Chief Policy Officer will work with national, state, and local stakeholders in the State Broadband Data and Development Grant program to foster a collaborative environment for broadband mapping and data sharing through research development and stakeholder relations. The annual salary for this position is projected to be \$132,000 for year 1 and \$137,280 for year 2. The annual salary for year 2 reflects a 4% Cost of Living adjustment. This position is projected to spend 1% of their time on this project with a salary cost of \$1,320 in year 1 and \$1,373 in year 2.

Manager, Research Development will be responsible for managing the production of Connected Nation research deliverables and the daily operations of the Connected Nation research staff. This position will work with internal and external stakeholders to develop research and provide critical analysis in support of the Connected Nation mission. The Manager, Research Development will use qualitative and quantitative techniques to interpret data, formulate reports and make substantiated recommendations based on research findings. The annual salary for this position is projected to be \$55,000 for year 1 and \$57,200 for year 2. The annual salary for year 2 reflects a 4% Cost of Living adjustment. This position is projected to spend 2% of their time on this project with a salary cost of \$1,100 in year 1 and \$1,144 in year 2.

Research Analyst will be responsible for using qualitative and quantitative techniques to interpret data, formulate reports and make substantiated recommendations based on research findings. This position will work with internal and external stakeholders to develop research and provide critical analysis in support of the Connected Nation mission. In addition, this position provides project-related guidance and quality assurance reviews for the CN research team. The annual salary for this position is projected to be \$39,600 for year 1 and \$41,184 for year 2. The annual salary for year 2 reflects a 4% Cost of Living adjustment. This position is projected to spend 8% of their time on this project with a salary cost of \$3,168 in year 1 and \$3,295 in year 2.

Research Specialist 1, position to be filled, will be responsible for using qualitative and quantitative techniques to interpret survey data, in addition to collecting data from secondary sources to help augment those findings. This position will work with internal and external stakeholders to help develop research and provide critical information in support of the Connected Nation mission. The annual salary for this position is projected to be \$35,200 for year 1 and \$36,608 for year 2. The annual salary for year 2 reflects a 4% Cost of Living adjustment. This position is projected to spend 8% of their time on this project with a salary cost of \$2,816 in year 1 and \$2,929 in year 2.

Research Specialist 4, position to be filled, will be responsible for using qualitative and quantitative techniques to interpret survey data, in addition to collecting data from secondary

sources to help augment those findings. This position will work with internal and external stakeholders to help develop research and provide critical information in support of the Connected Nation mission. The annual salary for this position is projected to be \$35,200 for year 1 and \$36,608 for year 2. The annual salary for year 2 reflects a 4% Cost of Living adjustment. This position is projected to spend 3.08% of their time on this project with a salary cost of \$1,084 in year 1 and \$1,128 in year 2.

Research Project Coordinator, position to be filled, is responsible for providing administrative project oversight and coordination for the research division. This includes a variety of tasks that involve administering project plans, managing workflow and timelines, verifying work quality, gathering documentation in support of projects, preparing reports and providing administrative support for the research team as necessary. The annual salary for this position is projected to be \$49,500 for year 1 and \$51,480 for year 2. The annual salary for year 2 reflects a 4% Cost of Living adjustment. This position is projected to spend 6.9% of their time on this project with a salary cost of \$3,416 in year 1 and \$3,552 in year 2.

Communications

Connected Nation's communications staff will support the project by implementing outreach and education efforts that will promote public awareness of the initiative, including the development of a dedicated website for the project. The overarching purpose will be to utilize the media and the Internet to encourage residents in all corners of the state to access the interactive map and speed testing tools. In turn, greater public awareness will result in greater scrutiny of the maps – a highly-effective mechanism for third-party validation that Connected Nation has utilized in other states with great success.

Director of Communications will be accountable for all published material on behalf of Connected Nation. This position is responsible to develop, coordinate, and oversee all communications strategies across all media ensuring that Connected Nation is aggressively and accurately represented in the public and various industry domains. The incumbent will manage both a direct staff and all Public Affairs Specialists co-located in various states as well as the messaging for all policy and advocacy releases. Further, this position is responsible for all the review and accuracy of all web content on any Connected Nation sponsored site and is responsible to develop and protect all Connected Nation branding/logo appearances. The annual salary for this position is projected to be \$77,000 for year 1 and \$80,080 for year 2. The annual salary for year 2 reflects a 4% Cost of Living adjustment. This position is projected to spend 2.5% of their time on this project with a salary cost of \$1,925 in year 1 and \$2,002 in year 2.

Communications Specialist 1, position to be filled, is responsible for assisting with projecting a positive image of the initiative aimed at spurring awareness, participation in, and general advocacy for the initiative through various media activities including web and other multimedia assets. This position will maintain consistent communications and coordinate with media at a national level to gain maximum exposure for CN's activities. In addition, the Communications Specialist 1 will support partner communications and assist in strategic downstate media outreach. The annual salary for this position is projected to be \$44,000 for year 1 and \$45,760 for year 2. The annual salary for year 2 salary reflects a 4% Cost of

Living adjustment. This position is projected to spend 19% of their time on this project with an annual salary cost of \$8,360 in year 1 and \$8,694 in year 2.

Communications QA, position to be filled, is responsible for proofreading and correcting all materials for spelling, grammar, readability, and consistency with CN guidelines. These materials include those associated with our partners and down-state operations, as well as our own corporate marketing materials designed to promote our work. The annual salary for this position is projected to be \$49,500 for year 1 and \$51,480 for year 2. The annual salary for year 2 reflects a 4% Cost of Living adjustment. This position is projected to spend 2.5% of their time on this project with a salary cost of \$1,238 in year 1 and \$1,287 in year 2.

Project Management

Executive Director, Strategic Program Office is responsible for the development and diffusion of a project management culture throughout the CN enterprise. The incumbent oversees programs to ensure that activities are carried out in accordance with established specifications, schedules, and budgets; oversees the coordination of interdepartmental functions in order to minimize delays; and meets with program team members on a regular basis to review program status and plan future actions. Additionally, the incumbent oversees the development of business architecture, technical architecture, and operational performance reporting for the company. The annual salary for this position is projected to be \$110,000 for year 1 and \$114,400 for year 2. The annual salary for year 2 reflects a 4% Cost of Living adjustment. This position is projected to spend 5% of their time on this project with an annual salary cost of \$5,500 in year 1 and \$5,720 in year 2.

Project Manager 2, position to be filled, will assist in the development and diffusion of a project management culture throughout the CN enterprise. In addition, the Project Manager will have a lead role in CN project management activities including implementation efforts for our Connect State engagements. This position will also provide project management support for identified CN deliverables including eCS activities and assist in the facilitation of the governance process for CN's Project Management methodology. The annual salary for this position is projected to be \$93,500 for year 1 and \$97,240 for year 2. The annual salary for year 2 salary reflects a 4% Cost of Living adjustment. This position is projected to spend 25% of their time on this project with an annual salary cost of \$23,375 in year 1 and \$24,310 in year 2.

Project Coordinator 2, position to be filled, will provide administrative project oversight for assigned Connected Nation projects. This includes a variety of tasks that involve administering project plans, managing workflow and timelines, verifying work quality, gathering documentation in support of projects, preparing reports, and providing administrative support for business managers as necessary. In addition, this position will coordinate internal or external facing events/ meetings, provide direct supervision to Student Interns and assist with other special event planning. The incumbent will take direction on the content of their work from the Manager that they are assigned to but will follow business process doctrine established by the Manager, Program Management and Consulting utilizing PMI standards. The Project Coordinator may also be called upon to assist with grant writing needs or to administer data for research, warehousing or outreach initiatives. The annual salary for this position is projected to be \$49,500 for year 1 and \$51,480 for year 2. The

annual salary for year 2 reflects a 4% Cost of Living adjustment. This position is projected to spend 50% of their time on this project with an annual salary cost of \$24,750 in year 1 and \$25,740 in year 2.

The total cost for personnel salaries for year 1 is \$200,553. Of this amount, \$155,124 is a cash match from the State of Illinois and \$45,429 is the requested federal share. Of the cash match from the State of Illinois, \$6,195 are the pre-award costs calculated through 9/30/09. The total cost for personnel salaries for year 2 is \$208,575 requested as the federal share.

Connected Nation may utilize other employees as needed to fulfill the requirements of this project.

Personnel Fringe Benefits: For each position allocated to the projects, provide the cost for fringe benefits, if available.

Fringe Benefits

Fringe benefits are projected as a percentage of the personnel's annual salary calculated as follows: Employer's FICA Tax (7.65%), Unemployment Tax (.5%), Health/Dental/Vision Insurance (5.7%), Disability & Life Insurance (.6%), Accrued Paid Time Off (3.6%), SIMPLE match (3%), Gym benefit (.1%), and Professional Development (.3%). The total projected percentage cost will be 21.45% of the personnel salaries. Projected fringe benefit cost for year 1 is \$43,017. Of this amount, \$33,274 is a cash match from the State of Illinois and \$9,743 is requested from federal sources. Of the cash match from the State of Illinois, \$1,326 are pre-award costs calculated through 9/30/09. Projected fringe benefit cost for year 2 is \$44,740, all requested as the federal share.

Travel: Provide additional information such that the basis for all figures is clear. For example, if assuming airplane travel, provide an estimated cost for each roundtrip ticket and how many trips are expected. For mileage, provide an estimate of how many miles are expected and how many trips, etc.

Projected Travel Costs

Airplane travel cost is projected to be \$500 per roundtrip with 42 trips expected in year 1 for a total cost of \$21,000 and 20 trips in year 2 for a total cost of \$10,400. All travel costs for year 2 reflect a 4% inflation adjustment. Hotel room cost is projected to be \$200 per room with 102 nights' occupancy in year 1 for a total cost of \$20,400 and with 46 nights' occupancy in year 2 for a total cost of \$9,568. Rental car expense is projected to be \$90 per day with 144 days projected rental in year 1 for a total cost of \$12,960 and with 66 days projected rental in year 2 for a total cost of \$6,178. Per diem allowance for meals is projected at \$45 per day based on the current standard federal per diem rate, with 144 days of travel in year 1 for a total cost of \$6,480 and with 66 days of travel in year 2 for a total cost of \$3,089. Mileage travel cost is projected at \$.55 per mile, the current applicable standard federal rate, and average trips of 120 miles with 42 expected trips in year 1 for a total cost of \$2,772 and 20 expected trips in year 2 for a total cost of \$1,373. Connected Nation may incur additional travel expenses as needed to fulfill the requirements of this project.

The Illinois travel costs consist of planned trips by 5 different categories of employees or consultants:

- Engineers travel includes 30 trips (4 days, 3 nights) in year 1 and 13 trips (4 days, 3 nights) in year 2 for data gathering and validation. This includes airfare from Kentucky to Illinois, rental car, hotel, per diem, and mileage to and from the airport.
- Sr. Manager, GIS Services travel includes 2 trips (2 days, 1 night) in year 1 and 2 trips (2 days, 1 night) in year 2. This includes airfare from Kentucky to Illinois, rental car, hotel, per diem, and mileage to and from the airport.
- Stakeholder Relations travel includes 3 trips (2 days, 1 night) in year 1 for stakeholder relations. This includes airfare primarily from Kentucky to Illinois, rental car, hotel, per diem, and mileage to and from the airport.
- Communications travel includes 2 trips (2 days, 1 night) year 1 and 2 trips (2 days, 1 night) in year 2 for communications, outreach, and education efforts in the state. This includes airfare from Kentucky to Illinois, rental car, hotel, per diem, and mileage to and from the airport.
- Project Manager travel includes 5 trips (2 days, 1 night) in year 1 and 3 trips (2 days, 1 night) in year 2 for project oversight and stakeholder relations. This would include an airfare from Kentucky to Illinois, rental car, hotel, per diem, and mileage to and from the airport.

Total travel costs in year 1 are expected to be \$63,612, \$47,709 paid as a cash match from the state and \$15,903 requested from federal funds. Through 9/30/09, Connected Nation has incurred \$2,319 of pre-award travel costs paid from the state cash matching funds. Travel costs in year 2 total \$30,607, all requested from federal funds.

Equipment: For hardware costs, provide a detailed description of all equipment to be purchased, when it will be purchased in the first two years, and the basis for the figures used.

Equipment

BroadbandSTAT is the next generation in broadband mapping, providing a comprehensive mapping portal for states to manage broadband stimulus projects and activities through the ARRA. Using ESRI's ArcGIS Server and its API mapping technologies to incorporate broadband mapping and survey data with demographic and topographic data from ESRI, the Census Bureau, and other reputable data sources, BroadbandSTAT provides not only a user-friendly GIS viewer to understand and track broadband deployment over time, it also provides an analytical tool for prioritizing unserved and underserved areas, evaluating and tracking stimulus projects, and enabling taxpayers with full transparency and accountability of broadband stimulus funding in their state. BroadbandSTAT empowers states to:

- Leverage the best-of-class, geographic informatics for broadband decision-making

- Build and evaluate scenarios to help score and prioritize broadband proposals
- Provide data-based support for effective grant-making
- Facilitate project investment tracking over time
- Provide access-based tools that are relevant and meaningful for specific audiences, including government agencies, consumers, community leaders, broadband providers, and media

The initial licensing cost for BroadbandSTAT (BBStat) is \$60,000 and this will be purchased prior to or upon completion of the initial map in the first year of the project. In year two of the project, an annual maintenance fee of \$15,000 will be paid approximately one year after licensing. Of the total cost for BBStat, 50% is included in the mapping portion of the grant while 50% is included in the planning portion. Total cost for BBStat included in the mapping grant for year 1 is \$30,000 and \$7,800 for year 2.

ESRI ArcInfo and ArcGIS software will be purchased and used to map the broadband and Community Anchor Institution data received. ESRI is the industry leader in GIS software. ArcInfo and other ESRI resources will allow Connected Nation to process the multitude of data formats that are received from the various broadband providers who have different levels of digital data available for their networks. This software will be purchased in the first year as soon as possible upon receipt of funding with annual maintenance in the second year. The cost of this software attributable to Illinois is \$9,853 in year 1 and \$2,154 in year 2.

The amount of data necessary to provide detailed mapping information requires an enhanced and secure storage capacity. The equipment necessary to achieve this capacity will be purchased and allocated between states. This equipment includes an SQL server for mapping geodatabase functionality as well as the associated software. The portion attributable to Illinois for the geodatabase in year 1 is \$1,576 and \$504 for the software. In addition, there is a need for multiple dedicated storage servers to accommodate the data storage capacity needs. The cost attributable to Illinois for this server in year 1 is \$3,152. The primary concern once the capacity needs have been met is to provide a safe and reliable environment for data storage. The Intrusion Prevention System, which is a security application and additional backup and replication solution, will be purchased for additional storage and redundancy. The projected cost for the security system in year 1 is \$1,340 and the projected cost for the replication system in year 1 is \$1,892.

Total equipment costs in year 1 are expected to be \$48,317, \$29,890 paid as a cash match from the state and \$18,427 requested from federal funds. Equipment costs in year 2 total \$9,954, all requested from federal funds.

Connected Nation may purchase other equipment as needed to fulfill the requirements of this project.

Materials/Supplies:

- ***For software costs, provide a detailed description of all equipment to be purchased, when they will be purchased in the first two years, and the basis for the figures used.***
- ***For all supplies expected to be purchased, please provide the information such that the basis for figures is clear.***

Materials/Supplies

A computer will be purchased to process the large amounts of GIS data received in this project. One computer and its associated equipment and software will be purchased for \$3,000 in the first year of the project.

Computers and peripheral equipment and software will be purchased for use on this project. Four computers and their associated equipment and software will be purchased for \$2,500 each. Three computers will be purchased in year 1 for a total cost of \$7,500 and one will be purchased in year 2 for a total cost of \$2,500.

Connected Nation will estimate typical download and upload speeds using information on actual speeds gathered through volunteer consumer-led, online speed tests. In order to conduct the speed tests, CN will purchase a custom speed test tool from Ookla Net Metrics for an initial cost of \$2,400 in year 1 and an annual license renewal cost in year 2 of \$500.

A Google Earth Pro license will be purchased for use with this project at a cost of \$800 in year 1. A renewal license for this program will be purchased in year 2 with a cost of \$800. This program is used by our GIS staff to assist with broadband data processing and is a virtual globe of maps and satellite imagery.

An Avcom PSA-37XP-60 spectrum analyzer (capable of scanning wireless frequencies from 700 MHz through 5.85 GHz) will be purchased for use with this project at a cost of \$4,000. This tool is used by our engineers to (i) conduct in-field testing to validate spectrum usage; (ii) to identify “rogue” signals that may indicate the presence of an unknown wireless broadband; and (iii) to assist wireless providers in testing signal-to-noise ratios. The spectrum analyzer will be purchased as soon as feasible in the first year of the project.

A handheld Garmin eTrex GPS unit (and related software) will be purchased for use with this project at a cost of \$275. This tool is used by our engineers to obtain GPS coordinates for providers and to validate those coordinates which have been submitted in data sets from providers. The GPS unit will be purchased as soon as feasible in the first year of the project.

Total cost for materials and supplies in year 1 are expected to be \$17,975, \$9,175 paid as a cash match from the state and \$8,800 requested from federal funds. Through 9/30/09, Connected Nation has incurred \$2,395 of pre-award costs paid from the state cash matching funds. Materials and supplies cost in year 2 total \$3,800, all requested from federal funds.

Connected Nation may purchase other materials and supplies as needed to fulfill the requirements of this project.

Subcontracts: For any significant subcontract, please provide the cost allocation in a format similar to the one listed directly above. Your current contractor budget only allocates personnel hours. If the contractor will be purchasing any equipment, performing any travel, etc. that should be clearly delineated.

Subcontracts

Connected Nation will work with GIS contractors to convert the various data types that providers will have to submit so that it will be processed and converted into a format that can conform to the prescribed federal requirements. This work will include the conversion of imagery, hard copy data, and infrastructure data that otherwise could not provide the data being requested. We anticipate that the consultant cost will primarily be comprised of personnel costs. The contractor or contractors have not yet been selected. Connected Nation estimates that 779 hours of GIS Contractor time will be needed in year 1 at an hourly rate of \$95 for a cost of \$74,005, of which \$49,600 will be paid from state cash and \$24,405 will be requested from federal sources.

Connected Nation will utilize Engineering Contractors to help in the data collection, solicitation, and development work. These Engineers will primarily work with the fixed wireless providers in states that often do not have engineering departments and thus are unable to provide the type of data necessary to accurately depict where their broadband services are available. These Engineers will also provide additional support where necessary with other broadband providers with whom their individual expertise is deemed helpful in the data collection. Engineers engaged to date on this project are as follows:

- Layne Wagner has worked 30 hours in year 1 at an hourly rate of \$35 for a total cost of \$1,050, which is a cash match from the State of Illinois.
- JaJa Consulting has been engaged to do a portion of this work and have agreed that for every 1 hour worked, they will agree to contribute 1 hour in-kind. JaJa Consulting will provide 780 hours of engineering time in year 1 at a rate of \$68 per hour for a total cost of \$53,040 that is comprised of the state of Illinois cash match of \$19,890, in-kind contractor match of \$26,520 and the federal share cost of \$6,630. In year 2 JaJa Consulting will provide 520 hours of engineering at a rate of \$68 per hour, escalated 4% for inflation, for a total cost of \$36,774, of which \$18,387 will be contributed as an in-kind match and \$18,387 will be requested from federal funds.
- Other Engineering Consultants are yet to be engaged. Connected Nation estimates the engineering consultants will contribute 1 hour in-kind match for every 3 hours worked. Connected Nation estimates that other Engineering Contractors will work 695 hours in year 1 at an hourly rate of \$100 for a total cost of \$69,510 that is comprised of the state of Illinois cash match of \$28,125, in-kind contractor match of \$13,260 and the federal share of \$28,125. In year 2, the engineering contractors are estimated to provide 119 hours of engineering at a rate of \$100 per hour, escalated 4% for inflation, for a total cost of \$12,360, of which \$3,000 will be contributed as an in-kind match and \$9,360 will be requested from federal funds.

Through 9/30/09, CN has incurred engineering pre-award costs totaling \$4,449. Of those pre-award costs, \$102 is an in-kind match and \$4,347 will be paid from state sources.

Connected Nation utilizes attorneys to assist in the negotiations of Non-Disclosure Agreements with the broadband providers. Eric Mills Attorney at Law, PLLC has been engaged to do this work and has agreed to contribute 1 hour in-kind match for every 1 hour

worked. In year 1, Eric Mills Attorney at Law, PLLC will work 100 hours at and hourly rate of \$200 for a total cost of \$20,000 comprised of the state of Illinois cash match of \$5,000, in-kind contractor match of \$10,000 and the federal share of \$5,000. In year 2, Eric Mills Attorney at Law, PLLC is estimated to provide 40 hours at a rate of \$100 per hour for a total cost of \$8,000, of which \$4,000 will be contributed as an in-kind match and \$4,000 will be requested from federal funds.

Connected Nation utilizes legal consultants to assist in the negotiations of Non-Disclosure Agreements with the broadband providers. The legal consultants will contribute 1 hour in-kind match for every 1 hour worked. In year 1, the legal consultants will work 202 hours at and hourly rate of \$125 for a total cost of \$45,313 comprised of the state of Illinois cash match of \$5,063, in-kind contractor match of \$10,125 and the federal share of \$10,125. In year 2, the legal consultants are estimated to provide 64 hours at a rate of \$125 per hour for a total cost of \$8,000, of which \$4,000 will be contributed as an in-kind match and \$4,000 will be requested from federal funds.

Connected Nation will utilize Research Consultants to assist with the survey research design, data processing of survey results and verification of reporting. Connected Nation has yet to contract with these consultants but we anticipate their rate would be \$150 per hour and we would utilize 10 hours each in year 1 and 2 at a cost of \$1,500 per year.

Research surveys will be conducted semi-annually in both years of the project to provide a third-party verification of the accuracy of the maps. We anticipate that the consultant cost will primarily be comprised of personnel costs. The vendor or vendors have not yet been selected. We would estimate the average cost for each survey to be \$21,230 with an annual total cost for year 1 to be \$42,460 and an annual cost for year 2, escalated 4% for inflation, totaling \$44,158. These costs will be allocated between mapping (40%) and planning (60%) so the projected cost for mapping is \$16,984 in years 1 and \$17,663 in year 2.

ESRI has submitted a proposal for deploying and hosting Connected Nation's BroadbandSTAT (BBStat) web application. Within this proposal, ESRI will house the customized BBStat application in their highly available, monitored and managed environment. The scope of services includes setting up a staging environment for data verification and compatibility as well as a production environment for client access. Capacity planning exercises have been completed to ensure that the supporting infrastructure meets the performance requirements and utilization expectations. ESRI expert technical support engineers will also be available to address escalated issues that may arise. The BBStat application will be securely located in an isolated and dedicated area within this hosting environment. Access will be limited to only dedicated ESRI technical staff in order to provide necessary support functions. Connected Nation will provide data updates to the application via a secure file transfer method. The total cost for deploying and hosting BBStat in year 1 is \$11,515 and \$6,208 in year 2.

ESRI will provide GIS technical productions support to CN as they perform database development activities. ESRI staff members will augment the CN team, both onsite at CN facilities and remotely from ESRI facilities. ESRI's support will include the following:

- Support data processing of acquired broadband coverage data

- Support configuration of data processing procedures and enhancements
- Support internal QA/QC procedures development and implementation
- Support configuration of map templates

All costs will be incurred in the first year of the project and the Illinois portion totals \$39,658.

Total subcontractor costs in year 1 are expected to be \$312,575, \$108,728 paid as a cash match from the state, \$59,905 provided as an in-kind contribution and \$143,942 requested from federal funds. Through 9/30/09, CN has subcontractor pre-award costs totaling \$5,649. Of those pre-award costs, \$502 is an in-kind match and \$5,147 will be paid from state sources. Subcontractor costs in year 2 total \$90,506 with \$29,387 provided as an in-kind contribution and \$61,119 requested from federal sources.

Connected Nation may engage other subcontractors as needed to fulfill the requirements of this project.

Other

Connected Nation will create an outreach campaign for the primary purpose of verification of data. CN will target media outlets in Illinois that can reach the greatest number of individuals in an outreach effort to drive them to Illinois's interactive maps and speed test tools. CN has been able to leverage outreach campaigns with media outlets in such way that for every outreach campaign it is expected 1 will be provided in-kind. We plan to target 8 outlets in year 1 and 4 outlets in year 2 with a total cost of \$20,000 and \$10,400 respectively. The total year 1 cost will be provided as a cash match from the state while the total cost for year 2 will be requested as the federal share. The costs for year 2 reflect a 4% inflation adjustment.

Indirect

Indirect costs are included at a rate of 30%. While Connected Nation does not currently hold a federal indirect cost rate, CN has calculated its rate in anticipation of requesting an indirect cost rate from the Department of Commerce. Total indirect costs in year 1 are \$302,593 with \$173,100 paid by the state, \$25,674 contributed in-kind and \$103,819 requested from federal sources. Through 9/30/09, CN has incurred pre-award costs related to indirect costs totaling \$7,664, \$7,449 to be paid from state sources and \$215 as an in-kind contribution. Total indirect costs in year 2 are \$170,821 with \$12,595 contributed in-kind and \$158,226 requested from federal sources.

Applicant Capacity, Knowledge, and Experience:

- 3. As described in the NOFA, please provide a description of the knowledge and experience of the applicant and associated project personnel. If you have not yet hired for certain positions please provide a description of the qualifications and expected work activities for these positions.***

Ashley Littell, GISP, Manager, GIS Services, joined Connected Nation as GIS Analyst in April 2007. She completed her M.S. work in Geoscience at Western Kentucky University using GIS in the fields of meteorology and climatology and earned her GIS certification in 2005. She was also a GIS Specialist for the Kentucky Mesonet, creating and analyzing GIS data layers in the evaluation of potential sites for an environmental-monitoring station network in Kentucky.

GISP2, position to be filled, is responsible for leading in the development and utilization of Geographic Information System techniques to provide a better understanding of certain variables in a given geographic location, extracting data from GIS software and using varying analysis methods to arrive at results and provide maps and data sets to Connected Nation's internal and external stakeholders. In addition, this position will provide direct supervision to the GIS Analyst positions.

The **GIS Director** position is yet to be filled. The qualifications required are as follows:

- Bachelor's degree in GIS, Geography, Geology, or related field required with emphasis on GIS preferred. Master's degree preferred.
- Ten years' experience, or educational equivalent, in the development and implementation of geographical information systems required.
- GISP or equivalent industry certification required.

Provider Manager 2 position is yet to be filled. The qualifications required are as follows:

- Bachelor's degree in GIS, Geography, Geology, or related field preferred with emphasis on GIS preferred. Master's degree preferred.
- Three years' experience, or educational equivalent, in the development and implementation of geographical information systems required.
- Client interface or customer service experience highly desired.
- Sales experience a plus.

Phillip Brown, Director, Governmental Affairs, previously served as the Director of Government Relations for the Association of Public Television Stations (APTS). At APTS, Phillip played a pivotal role in the strategy and advocacy efforts for America's public television stations, with particular success in telecommunications policy, education policy, and the creation of a new digital emergency alert system to improve homeland security. Prior to joining APTS, Phillip spent over six years working for the U.S. House of Representatives, serving the Sixth Congressional District of Kentucky and the Fifth Congressional District of New Jersey as a Staff Assistant, Legislative Assistant, Legislative Director, District Director, and finally Deputy Chief of Staff and Press Secretary. Phillip received a B.A. degree from Centre College in International Relations with an emphasis in the international conventional arms trade in 1996.

Raquel Noriega, Director, Policy Development, previously served as an economic consultant in Washington, DC, Madrid, Spain, and London, UK. She provided consulting services to telecommunications and media firms in the USA, Europe, and Latin America, supporting advocacy efforts in legislative, regulatory, and antitrust proceedings relating to telecommunications and broadband policy and spectrum license policy. Raquel received her

Masters in Arts and Sciences for Economics from Northwestern University. She is a graduate of the University of Michigan in Ann Arbor with a degree in economics.

Lauren Hightower, Manager, Research & Policy Communications, joined Connected Nation in March 2009 and previously served in both the Personnel Cabinet and Cabinet for Health & Family Services with the Commonwealth of Kentucky. Her roles have included Special Assistant to the Secretary, Interim Deputy Director of Boards & Commissions for the Office of the Governor, CHFS Acting Director of Boards of Commissions and Legislative Assistant.

Chip Spann, Director, Engineering & Technical Services, previously served as President of EZ Transition Advisors, LLC (a wireless consulting firm specializing in Broadband Radio Service (“BRS”) and Educational Broadband Service (“EBS”) consultation). He has also held several corporate executive positions with companies such as Sprint, American Telecasting, Inc. and Fleming-Mason Service Corporation. His client list includes regional companies (Time Warner Telecom, IVI Communications, Inc.) as well as national corporations such as Clearwire Corporation.

Layne Wagner, Technical Engineering Analyst, has rich experience in the wireless telecommunications industry and has successfully started and operated his own firm which built and/or provided fixed wireless assessments, design, technical support, spectrum analysis, demographic research, system maintenance, propagation studies, and training. He has been engaged by both the public and private sectors and his overall experience includes work on over 150 tower structures ranging in height from 40’–1,200’. Layne has also completed vendor-specific training in RF Engineering with Motorola Canopy, Alvarion, Solectec, Proxim, Orthogon, and HotZone.

Laura Taylor, Chief Policy Officer, previously served as legislative analyst and bill drafter for the Kentucky Legislative Research Commission. In her role with the Kentucky General Assembly, Laura served as lead staff for the House Committee on Economic Development to develop legislation on a nonpartisan basis. Before her work with the General Assembly, Laura worked with the research consortia of the Corporate Executive Board in Washington, D.C. to build awareness of the organization’s best practices research and corporate networks. Laura began her work with Connected Nation in 2004 as Director of Research for ConnectKentucky. Since that time, she has led the design and implementation of Connected Nation’s survey work, including statewide and county-level surveys to verify and cross-check broadband mapping data, measure broadband adoption and computer ownership, and understand barriers to technology adoption. Laura received her Masters in Arts from the University of Kentucky Pattern School of Diplomacy and International Commerce.

Chris McGovern, Manager, Research Development, previously served as Research Analyst for ConnectKentucky and Senior Research Analyst for Connected Nation. Chris joined Connected Nation in May 2007, and prior to that he was a Graduate Research Assistant for Murray State University’s Department of Economics and Finance. Chris holds a Bachelor of Arts degree in political science from the University of Illinois at Chicago, and a Master of Science in economics from Murray State University.

Travis Lane, Research Analyst, joined Connected Nation as a Research Analyst in June 2009. Previously, he served as a Business Research intern for the Kentucky Enterprise Fund, an initiative of Kentucky Science and Technology Corporation. Travis holds a Bachelor of Business Administration degree from the University of Kentucky, where he focused his studies on business management and international studies.

The **Research Specialist 1** position is yet to be filled. The qualifications required are as follows:

- Bachelor's degree in Business, Economics, Political Science, or similar discipline required.
- One to three years of similar research and analysis experience required.

The **Research Specialist 4** position is yet to be filled. The qualifications required are as follows:

- Bachelor's degree in Business, Economics, Political Science, or similar discipline required.
- One to three years of similar research and analysis experience required.

The **Research Project Coordinator** position is yet to be filled. The qualifications required are as follows:

- Bachelor's degree in Business-related discipline desired.
- Must have five years of experience in a professional setting and be skilled in managing projects.

Jessica Ditto, Director of Communications, previously served as Special Projects Manager for U.S. Senator Jim Inhofe in Washington, D.C. In that role Jessica worked with a team of press and legislative staff to promote the senator's legislative agenda and was in charge of coalition and third-party outreach. She began her professional career in Kentucky state government serving in the Governor's press and local government offices. She holds a B.A. in History from Asbury College.

The **Communications Specialist 1** position is yet to be filled. The qualifications required are as follows:

- A Bachelor's or advanced degree in Communications, Public Relations, Journalism, English, or related field required.
- Three years of Public or Media Relations, Communications, or Journalism experience required.
- Experience with VOCUS PR software preferred.

The **Communications QA** position is yet to be filled. The qualifications required are as follows:

- Bachelor's degree in English, Journalism, Communications, or equivalent education and/or experience required.
- Three to five years of professional editing and/or proofreading experience required.

Ernie Wood, Executive Director, Strategic Program Office, has over 25 years of experience in the telecommunications arena. Prior to joining Connected Nation, he served as Senior Consultant and Program Manager for IBM Global Services. There he managed lead architects, test managers, and project managers for multi-million dollar initiatives in the securities, insurance and Customer Relationship Management (CRM) industries. Prior to joining IBM Global Services, Ernie incorporated EPW Consulting and served as a Project Manager with SCB Technologies in Memphis for the Federal Department of Labor. He held a similar post at AETEA Information Technology Consulting Inc. in Washington, DC where he performed as Project Manager for Fannie Mae (FNMA) Corporate. Wood holds a Bachelor's and Master's in Computer Science and received his Project Management Certification from Xavier University.

The **Project Manager 2** position is yet to be filled. The qualifications required are as follows:

- Bachelor's degree in Information Technology discipline or related field is required; MBA or Master's degree in a relevant field is preferred.
- Minimum of 5 years in a technology-related project management role required along with experience in the communications technology industry; Project Management certification preferred.

The **Project Coordinator 2** position is yet to be filled. The qualifications required are as follows:

- Bachelor's degree in Business-related discipline desired.
- Must have five years of experience in a professional setting and be skilled in managing projects.
- Must commit to standardized training in PMI methodology.

Total Connected Nation Mapping Costs

Total project costs related to Connected Nation's broadband mapping are \$1,008,641 in year 1 (\$577,000 provided as a cash contribution from the state of Illinois, \$85,579 provided an in-kind contribution and \$346,062 requested from federal sources) and \$569,403 in year 2 (\$41,982 provided as an in-kind contribution and \$527,421 requested from federal sources).

-- End of Connected Nation Mapping Section --

Other Subcontractors

PCI will contract with an external accountant to provide expertise related to development and maintenance of a grants compliance system. In addition, this private sector public accounting firm will ensure full not-for-profit reporting and implementation of federally compliant accounting standards. Total costs are expected to be \$3,000 for each year of the project, all requested from federal sources.

PCI will contract with a certified public accounting firm to perform an annual financial and compliance audit in accordance with *Government Auditing Standards* and the U.S. Office of Management and Budget Circular A-133, *Audits of States, Local Governments, and Non-Profit*

Organizations. Total costs related to this audit are expected to be \$20,000 for each year of the project, all requested from federal sources.

Other

PCI anticipates incurring insurance costs totaling \$5,000 for each year of the project, all requested from federal sources.

PCI anticipates incurring printing and copying costs totaling \$3,000 for each year of the project, all requested from federal sources.

PCI projects office rental costs to be \$450 per month for a total of \$5,400 for each year of the project, all requested from federal sources.

PCI expects monthly telephone costs to be \$100 for an annual total of \$1,200 for each year of the project, all requested from federal sources.

Total Mapping Project Costs

The total mapping project costs are \$1,292,074 in year 1 (\$577,000 provided as a cash contribution from the state of Illinois, \$117,375 provided an in-kind contribution and \$597,699 requested from federal sources) and \$838,218 in year 2 (\$68,444 provided as an in-kind contribution and \$769,774 requested from federal sources).

STATE OF ILLINOIS PLANNING NARRATIVE

The Partnership for a Connected Illinois, Inc. (PCI) will utilize subcontractors to implement the broadband planning activities for the State of Illinois.

Subcontracts: For any significant subcontract, please provide the cost allocation in a format similar to the one listed directly above. Your current contractor budget only allocates personnel hours. If the contractor will be purchasing any equipment, performing any travel, etc. that should be clearly delineated.

Subcontracts

Southern Illinois University

Southern Illinois University (SIU) will provide project management oversight related to the broadband planning project.

Personnel Salaries: For each position allocated to the projects, provide a description of the position responsibilities, annual salary, and percentage of time dedicated to this project for Year 1 and Year 2. Please ensure that costs are clear for both Years 1 and 2, as opposed to both years cumulatively.

Personnel Salaries

Director of Community Development & Outreach and University Liaison to the Connect SI Initiative is responsible for the day-to-day operations of PCI as well as the overall project management and direction of this project. The incumbent provides direction and oversight to each of the three performing partners in this project. The annual salary for this position is projected to be \$68,964 and escalated for a 5 % Cost of Living adjustment for years 2 through 5. This position is projected to spend 22.5% of their time on this project with salary costs in years 1-5 of \$15,517, \$16,293, \$19,008, \$19,959, and \$20,957, respectively. This position will be provided in-kind by SIU.

Personnel Fringe Benefits: For each position allocated to the projects, provide the cost for fringe benefits, if available.

Fringe Benefits

Fringe Benefits are projected as 32% of the personnel's annual salary. The total fringe benefit costs in years 1-5 are \$4,965, \$5,214, \$6,083, \$6,387, and \$6,706, respectively. These benefits will be provided in-kind by SIU.

Indirect

Southern Illinois University will provide in-kind indirect cost at a rate of 31% on the applicant share costs in years 1-5 totaling \$9,202, \$9,662, \$11,273, \$11,836, \$12,428, respectively.

Applicant Capacity, Knowledge, and Experience:

- 1. As described in the NOFA, please provide a description of the knowledge and experience of the applicant and associated project personnel. If you have not yet hired for certain positions please provide a description of the qualifications and expected work activities for these positions.***

Rex Duncan, Director of Community Development & Outreach and University Liaison to the Connect SI initiative, has been involved with broadband connectivity issues since 2003. He currently serves as Director of Community Development and Outreach at Southern Illinois University. He also serves as University Liaison to the Connect SI initiative. Connect SI evolved out of a three-county project in southern Illinois headed by the Southern Illinois Coal Belt Champion Community, Inc., a 501(c)(3) non-profit providing economic and community development support in parts of Perry, Franklin, and Williamson Counties. Mr. Duncan is President of the Board of Directors of that organization. He served as the founding Executive Director of Connect SI. Mr. Duncan is also an elected city commissioner in Du Quoin, Illinois. In 2006 Mr. Duncan was recognized as a Leader Among Us by *Southern Business Journal*. Mr. Duncan has spoken extensively about Connect SI and the power of broadband Internet access on economic and community development. He was recently an invited speaker at the Delta Regional Authority Delta Leadership Institute in New Orleans. He was also a co-presenter at the Rural Telecon 2007 conference in Springfield, Illinois. He has testified on university implications of broadband access before the Illinois House of Representatives Telecommunications Committee Subcommittee on Broadband Deployment. Mr. Duncan holds an M.S.Ed. degree specializing in education, training, and development from Southern Illinois University and a B.S. Business degree from Eastern Illinois University.

Total Southern Illinois University Costs

Total project costs related to Southern Illinois University's planning project management oversight in years 1-5 are \$29,684, \$31,168, \$36,364, \$38,181, and \$40,091, respectively, all provided as an in-kind contribution from SIU.

-- End of Southern Illinois University Planning Section --

Connected Nation Planning

All Connected Nation planning costs are requested from federal sources.

Personnel Salaries

Research

Chief Policy Officer is an executive management position that provides vision and leadership for the direction of Connected Nation's policy and research strategy and execution. This position is responsible for overseeing the development, advocacy, and communication of research-based public policy in collaboration with stakeholders at the national, state, and local levels. In addition, the Chief Policy Officer oversees development of the guidelines, content, and integrity of Connected Nation's research. The Chief Policy Officer will work with national, state, and local stakeholders in the State Broadband Data and Development Grant program to foster a collaborative environment for broadband mapping and data sharing through research development and stakeholder relations. The annual salary for this position is projected to be \$132,000 for year 1 and escalated for a 4 % Cost of Living adjustment for years 2 through 5. This position is projected to spend 1.5% of their time on this project in years 1 through 2 with a salary cost of \$1,980 and \$2,059, respectively. This position is projected to spend 1.25% of their time on this project in years 3 through 5 with a salary cost of \$1,785, \$1,856 and \$1,930, respectively.

Manager, Research Development will be responsible for managing the production of Connected Nation research deliverables and the daily operations of the Connected Nation research staff. This position will work with internal and external stakeholders to develop research and provide critical analysis in support of the Connected Nation mission. The Manager, Research Development will use qualitative and quantitative techniques to interpret data, formulate reports and make substantiated recommendations based on research findings. The annual salary for this position is projected to be \$55,000 for year 1 and escalated for a 4 % Cost of Living adjustment for years 2 through 5. This position is projected to spend 3% of their time on this project in years 1 through 2 with a salary cost of \$1,650 and \$1,716, respectively. This position is projected to spend 2.5% of their time on this project in years 3 through 5 with a salary cost of \$1,487, \$1,547 and \$1,609, respectively.

Research Analyst will be responsible for using qualitative and quantitative techniques to interpret data, formulate reports and make substantiated recommendations based on research findings. This position will work with internal and external stakeholders to develop research and provide critical analysis in support of the Connected Nation mission. In addition, this position provides project-related guidance and quality assurance reviews for the CN research team. The annual salary for this position is projected to be \$39,600 for year 1 and escalated for a 4 % Cost of Living adjustment for years 2 through 5. This position is projected to spend 12% of their time on this project in years 1 through 2 with a salary cost of \$4,752 and \$4,942, respectively. This position is projected to spend 10% of their time on this project in years 3 through 5 with a salary cost of \$4,283, \$4,454 and \$4,633, respectively.

Research Specialist 1, position to be filled, will be responsible for using qualitative and quantitative techniques to interpret survey data, in addition to collecting data from secondary sources to help augment those findings. This position will work with internal and external stakeholders to help develop research and provide critical information in support of the Connected Nation mission. The annual salary for this position is projected to be \$35,200 for year 1 and escalated for a 4 % Cost of Living adjustment for years 2 through 5. This

position is projected to spend 12% of their time on this project in years 1 through 2 with a salary cost of \$4,224 and \$4,393, respectively. This position is projected to spend 10% of their time on this project in years 3 through 5 with a salary cost of \$3,807, \$3,960 and \$4,118, respectively.

Research Specialist 4, position to be filled, will be responsible for using qualitative and quantitative techniques to interpret survey data, in addition to collecting data from secondary sources to help augment those findings. This position will work with internal and external stakeholders to help develop research and provide critical information in support of the Connected Nation mission. The annual salary for this position is projected to be \$35,200 for year 1 and escalated for a 4 % Cost of Living adjustment for years 2 through 5. This position is projected to spend 4.62% of their time on this project in years 1 through 2 with a salary cost of \$1,626 and \$1,691, respectively. This position is projected to spend 3.85% of their time on this project in years 3 through 5 with a salary cost of \$1,466, \$1,524 and \$1,585, respectively.

Project Management

Project Manager 2, position to be filled, will assist in the development and diffusion of a project management culture throughout the CN enterprise. In addition, the Project Manager will have a lead role in CN project management activities including implementation efforts for our Connect State engagements. This position will also provide project management support for identified CN deliverables including eCS activities and assist in the facilitation of the governance process for CN's Project Management methodology. The annual salary for this position is projected to be \$93,500 for year 1 and escalated for a 4 % Cost of Living adjustment for years 2 through 5. This position is projected to spend 25% of their time on this project in years 1 through 2 with a salary cost of \$23,375 and \$24,310, respectively. This position is projected to spend 5% of their time on this project in years 3 through 5 with a salary cost of \$5,056, \$5,259 and \$5,469, respectively.

Connected Nation may utilize other employees as needed to fulfill the requirements of this project.

Personnel Fringe Benefits: For each position allocated to the projects, provide the cost for fringe benefits, if available.

Fringe Benefits

Fringe benefits are projected as a percentage of the personnel's annual salary calculated as follows: Employer's FICA Tax (7.65%), Unemployment Tax (.5%), Health/Dental/Vision Insurance (5.7%), Disability & Life Insurance (.6%), Accrued Paid Time Off (3.6%), SIMPLE match (3%), Gym benefit (.1%) and Professional Development (.3%). The total projected percentage cost will be 21.45% of the personnel salaries for years 1 through 5. Projected fringe benefit cost for years 1 through 5 are \$8,068, \$8,389, \$3,836, \$3,991 and \$4,149, respectively.

Projected Travel Costs

Illinois travel costs consist of planned trips by the project manager for project oversight and stakeholder relations. Airplane travel cost is projected to be \$500 per roundtrip with 5 trips expected in year 1 for a total cost of \$2,500, 3 trips in year 2 for a total cost of \$1,560 and 2 trips expected in each of years 3 through 5 for a total cost of \$1,082, \$1,125 and \$1,170, respectively. All travel costs for years 2 through 5 reflect a 4% annual inflation adjustment. Hotel room cost is projected to be \$200 per room with 5 night's occupancy in year 1 for a total cost of \$1,000 and with 3 night's occupancy in year 2 for a total cost of \$624 and 2 night's occupancy in each of years 3 through 5 for a total cost of \$433, \$450 and \$468, respectively. Rental car expense is projected to be \$90 per day with 10 days projected rental in year 1 for a total cost of \$900 and with 6 days projected rental in year 2 for a total cost of \$562 and 4 trips expected in each of years 3 through 5 for a total cost of \$389, \$405 and \$421, respectively. Per diem allowance for meals is projected at \$45 per day based on the current standard federal per diem rate, with 10 days of travel in year 1 for a total cost of \$450 and with 6 days of travel in year 2 for a total cost of \$281 and 4 trips expected each of years 3 through 5 for a total cost of \$195, \$202 and \$211, respectively. Mileage travel cost is projected at \$.55 per mile, the current applicable standard federal rate, and average trips of 120 miles with 5 expected trips in year 1, 6 expected trips in year 2 and 2 trips in each of years 3 through 5 for a total cost \$330, \$206, \$143, \$148 and \$154, respectively.

Connected Nation may incur additional travel expenses as needed to fulfill the requirements of this project.

Equipment: For hardware costs, provide a detailed description of all equipment to be purchased, when it will be purchased in the first two years, and the basis for the figures used.

Equipment

BroadbandSTAT is the next generation in broadband mapping, providing a comprehensive mapping portal for states to manage broadband stimulus projects and activities through the ARRA. Using ESRI's ArcGIS Server and its API mapping technologies to incorporate broadband mapping and survey data with demographic and topographic data from ESRI, the Census Bureau, and other reputable data sources, BroadbandSTAT provides not only a user-friendly GIS viewer to understand and track broadband deployment over time, it also provides an analytical tool for prioritizing unserved and underserved areas, evaluating and tracking stimulus projects, and enabling taxpayers with full transparency and accountability of broadband stimulus funding in their state. BroadbandSTAT empowers states to:

- Leverage the best-of-class, geographic informatics for broadband decision-making
- Build and evaluate scenarios to help score and prioritize broadband proposals
- Provide data-based support for effective grant-making
- Facilitate project investment tracking over time
- Provide access-based tools that are relevant and meaningful for specific audiences, including government agencies, consumers, community leaders, broadband providers, and media

The initial licensing cost for BroadbandSTAT (BBStat) is \$60,000 and this will be purchased prior to or upon completion of the initial map in the first year of the project. In year two of the project, an annual maintenance fee of \$15,000 will be paid approximately one year after licensing. Of the total cost for BBStat, 50% is included in the mapping portion of the grant while 50% is included in the planning portion. Total cost for BBStat included in the planning grant for year 1 is \$30,000 and \$7,800 for year 2.

Connected Nation may purchase other equipment as needed to fulfill the requirements of this project.

Subcontracts: For any significant subcontract, please provide the cost allocation in a format similar to the one listed directly above. Your current contractor budget only allocates personnel hours. If the contractor will be purchasing any equipment, performing any travel, etc. that should be clearly delineated.

Subcontracts

Connected Nation will utilize Research Consultants to assist with the survey research design, data processing of survey results and verification of reporting. Connected Nation has yet to contract with these consultants but we anticipate their rate would be \$150 per hour and we would utilize the research consultants approximately 15 hours per year for years 1 through 5, for a cost of \$2,243, \$2,332, \$2,425, \$2,523 and \$2,623, respectively. All consultant costs for year 2 through 5 reflect a 4% inflation adjustment.

Research surveys will be conducted semi-annually in both years of the project to provide a third-party verification of the accuracy of the maps. We anticipate that the consultant cost will primarily be comprised of personnel costs. The vendor or vendors have not yet been selected. We would estimate the average cost for each survey to be \$21,230 with an annual total cost for year 1 to be \$42,460 and an annual cost for year 2 of \$44,158. Of the total cost for research surveys, 40% is included in the mapping portion of the grant while 60% is included in the planning portion. The cost for year 1 would be \$25,476 and year 2 cost would be \$26,495. In years 3 through 5, one survey would be conducted each year with a 100% included in the planning grant. The cost for year 3 through year 5 would be \$22,962, \$23,881 and \$24,836, respectively. All research survey costs for year 2 through 5 reflect a 4% inflation adjustment.

Connected Nation may engage other subcontractors as needed to fulfill the requirements of our contract with Illinois.

Indirect Costs

Indirect costs are included at a rate of 30%. While Connected Nation does not currently hold a federal indirect cost rate, CN has calculated its rate in anticipation of requesting an indirect cost rate from the Department of Commerce. Total indirect costs in years 1 through 5 are \$46,532, \$37,440, \$21,150, \$21,996 and \$22,876, respectively.