

---

**U.S. Department of Commerce**  
**Broadband Technology Opportunities Program**  
**Authentication and Certifications**

---

1. I certify that I am the duly Authorized Organization Representative (AOR) of the applicant organization, and that I have been authorized to submit the attached application on its behalf.
2. I certify that I have examined this application, that all of the information and responses in this application, including certifications, and forms submitted, all of which are part of this grant application, are material representations of fact and true and correct to the best of my knowledge, that the entity(ies) that is requesting grant funding pursuant to this application and any subgrantees and subcontractors will comply with the terms, conditions, purposes, and federal requirements of the grant program; that no kickbacks were paid to anyone; and that a false, fictitious, or fraudulent statements or claims on this application are grounds for denial or termination of a grant award, and/or possible punishment by a fine or imprisonment as provided in 18 U.S.C. §1001 and civil violations of the False Claims Act.
3. I certify that the entity(ies) I represent has and will comply with all applicable federal, state, and local laws, rules, regulations, ordinances, codes, orders and programmatic rules and requirements relating to the project. I acknowledge that failure to do so may result in rejection or deobligation of the grant or loan award. I acknowledge that failure to comply with all federal and program rules could result in civil or criminal prosecution by the appropriate law enforcement authorities.
4. I certify that the entity(ies) I represent has and will comply with all applicable administrative and federal statutory, regulatory, and policy requirements set forth in the Department of Commerce Pre-Award Notification Requirements for Grants and Cooperative Agreements ("DOC Pre-Award Notification"), published in the Federal Register on February 11, 2008 (73 FR 7696), as amended; DOC Financial Assistance Standard Terms and Conditions (Mar. 8, 2009); the Department of Commerce American Recovery and Reinvestment Act Award Terms (Apr. 9, 2009); and any Special Award Terms and Conditions that are included by the Grants Officer in the award.
5. I certify that any funds awarded to the entity(ies) I represent as a result of this application will not result in any unjust enrichment of such entity(ies) or duplicate any funds such entity(ies) receives under federal universal service support programs administered by the Universal Service Administrative Corporation (USAC).
6. I certify that the entity(ies) I represent has secured access to pay the 20% of total project cost or has petitioned the Assistant Secretary of NTIA for a waiver of the matching requirement.

March 18, 2010  
Date

Claire A. Collins  
Authorized Organization Representative Signature

Claire A. Collins  
Print Name

County Administrator  
Title

**Broadband Subscriber Estimates**

Name of Service Offering	Customer Type	Year 0	Cumulative/ Net Add	Year 1				Year 2				Year 3				Year 4	
				Qtr 1	Qtr 2	Qtr 3	Qtr 4	Qtr 1	Qtr 2	Qtr 3	Qtr 4	Qtr 1	Qtr 2	Qtr 3	Qtr 4	Qtr 1	Qtr 2
Served by 3rd Party Service Providers	Indirect - Res./Ind.	Cumulative	0	0	187	375	412	449	487	525	525	525	525	525	543	562	
		Net Add	0	0	187	188	37	37	38	38	0	0	0	0	18	19	
	Indirect - Business	Cumulative	0	0	135	271	284	297	311	325	325	325	325	325	352	379	
		Net Add	0	0	135	136	13	13	14	14	0	0	0	0	27	27	
	Indirect - Com. Anchor Inst.	Cumulative	0	0	29	59	60	61	62	63	64	65	66	68	71	74	
		Net Add	0	0	29	30	1	1	1	1	1	1	1	2	3	3	
			Cumulative														
			Net Add														
			Cumulative														
			Net Add														
Cumulative Totals (excluding Indirect)	Residential/Individual	Total															
	Business	Total															
	Community Anchor Inst.	Total															
	Third Party Service Provider	Total															
Cumulative Totals (including Indirect)	Residential/Individual	Total	0	0	187	375	412	449	487	525	525	525	525	543	562		
	Business	Total	0	0	135	271	284	297	311	325	325	325	325	352	379		
	Community Anchor Inst.	Total	0	0	29	59	60	61	62	63	64	65	66	68	71	74	

**Table of Customer Types**

Residential/Individual
Business
Community Anchor Inst.
Third Party Service Provider
Indirect - Res./Ind.
Indirect - Business
Indirect - Com. Anchor Inst.

**Explanation of Methodology:**

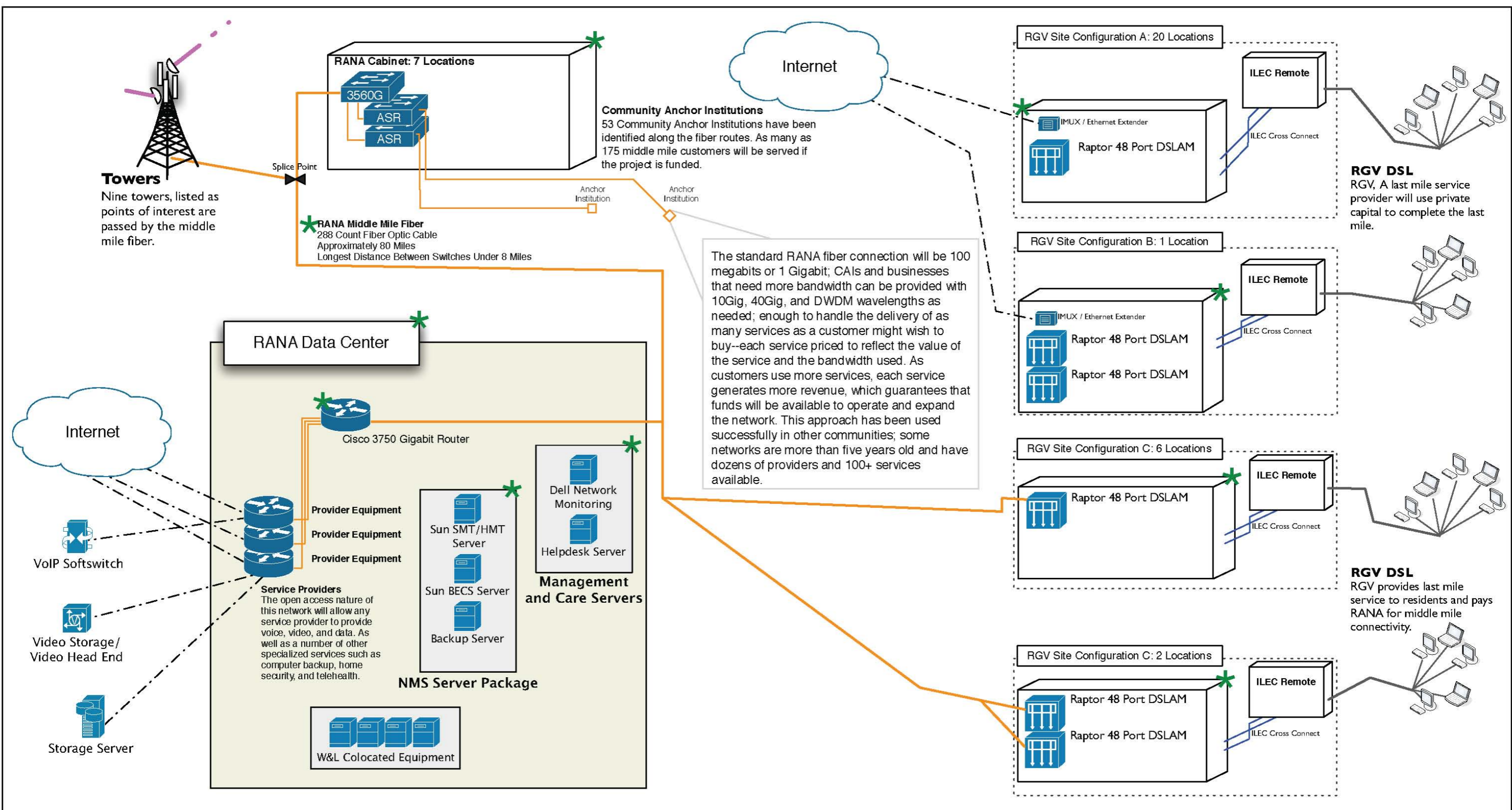
The Rockbridge Area Network Authority is an Open-Access Open-Services network. RANA will not connect customers, but will provide a shared infrastructure for private service providers to provide services. The Service Providers will pay the network owner, The Rockbridge Area Network Authority, a revenue share of each service offered based upon a formula agreed to per service. More detail can be found in the Pro-forma and Key Assumptions Worksheet attached to this application but the average revenue share percentage that the Service Providers will pay the owner will be around 30% of gross revenue (per service).

3rd Party Services will include, but not be limited to:

Residential - Fiber Internet (3 & 5 MBps), DSL (including bundles), IP Telephony (Voice), IPTV, Movies on Demand, Residential Fiber Bundles  
 Business - VPN (5, 10, 25 MBps), Business Class Internet (2, 5, 10 MBps), Multi-line VoIP, Business Bundles  
 Community Anchor and Government - VPN (2, 10, 25, 100, 1000 MBps), Business Class Internet (5, 10, 25 MBps), Multi-line VoIP

The subscriber estimates (counts) are based upon number of homes, businesses, and CAIs passed with a modest percentage taking service (take rate) and growing over the 8 years of the financial forecast.

Qtr 4		Year 5				Year 6				Year 7				Year 8			
Qtr 3	Qtr 4	Qtr 1	Qtr 2	Qtr 3	Qtr 4	Qtr 1	Qtr 2	Qtr 3	Qtr 4	Qtr 1	Qtr 2	Qtr 3	Qtr 4	Qtr 1	Qtr 2	Qtr 3	Qtr 4
581	600	618	637	656	675	693	712	731	750	768	787	806	825	843	862	881	900
19	19	18	19	19	19	18	19	19	19	18	19	19	19	18	19	19	19
406	433	473	514	555	596	623	650	677	704	731	758	785	812	825	839	853	867
27	27	40	41	41	41	27	27	27	27	27	27	27	27	13	14	14	14
77	81	81	81	81	81	81	81	81	81	81	81	81	81	81	81	81	81
3	4	0	0	0	0	0	0	0	0	0	0	0	0	0	0	0	0
581	600	618	637	656	675	693	712	731	750	768	787	806	825	843	862	881	900
406	433	473	514	555	596	623	650	677	704	731	758	785	812	825	839	853	867
77	81	81	81	81	81	81	81	81	81	81	81	81	81	81	81	81	81



# BTOP Comprehensive Community Infrastructure Project Plan and Build-out Timeline

## RANA BTOP Round 2

### PROJECT PLAN

- Use the following table to list the major network build-out phases and milestones that can demonstrate that your entire project will be substantially complete by the end of Year 2 and fully complete by the end of Year 3. This is to be done at the aggregate level (combining all proposed funded service areas.)
- Indicated how the milestones listed below will demonstrate these completion objectives. The applicant should consider such project areas as: a) network design; b) securing all relevant licenses and agreements; c) site preparation; d) inside plant deployment; e) outside plan deployment; f) deployment of business & operational support systems; g) network testing; f) network operational. The applicant may provide any other milestones that it believes showcase progress.
- Project inception (Year 0) starts at the date when the applicant receives notice that the project has been approved for funding.
- In the table, provide any information (e.g., facts, analysis) to: a) demonstrate the reasonableness of these milestones; b) substantiate the ability to reach the milestones by the quarters indicated.

Time Period	Quarter	Milestones	Support for Reasonableness/Data Points
Year 0	-	<ul style="list-style-type: none"> <li>• Issue RFP for Engineering</li> <li>• Issue RFP for Construction Management and Project Management Services</li> <li>• Issue RFP for Technical Consulting</li> <li>• Issue RFP for Data Center Architecture and Engineering Contract</li> </ul>	<ul style="list-style-type: none"> <li>• Have existing RFP templates</li> </ul>

Year 1	Qtr. 1	<ul style="list-style-type: none"> <li>• Receive and Evaluate all RFP Responses</li> <li>• Negotiate contracts with awarded Engineering firm and PM/ Construction management firm</li> <li>• Engineering firm to initiate drawings and create initial BOMs</li> <li>• Data Center Design Initiated</li> <li>• Order Pre-Fab Shelters</li> <li>• Project Plan Created</li> </ul>	<ul style="list-style-type: none"> <li>• Past experience working with local engineering and consulting firm.</li> </ul>
	Qtr. 2	<ul style="list-style-type: none"> <li>• Order Construction Materials from initial BOMs</li> <li>• Obtain relevant permits for construction</li> <li>• Order Network Equipment</li> </ul>	<ul style="list-style-type: none"> <li>• Past experience with project of similar size</li> </ul>
	Qtr. 3	<ul style="list-style-type: none"> <li>• Finalize all engineering drawings</li> <li>• Approve Data Center Design</li> <li>• Order remaining materials with delivery dates based upon project plan</li> <li>• Pre-Fab Shelter Delivery</li> <li>• Install BSS / OSS Servers</li> <li>• Install BSS / OSS Software</li> <li>• Install and Configure Core Network Equipment</li> <li>• Negotiate initial service offerings from Service Providers</li> <li>• Initiate construction and complete 47,000ft. Middle Mile construction</li> <li>• Install and Configure Core Network Equipment</li> <li>• Complete 18 Middle Mile Drops</li> </ul>	<ul style="list-style-type: none"> <li>• Past experience with project similar size</li> <li>• 2 construction crews</li> <li>• 1 drop crews</li> <li>• 1 splice crew</li> </ul>
	Qtr. 4	<ul style="list-style-type: none"> <li>• Initiate and Complete IT System Testing</li> <li>• Initiate and Complete Network Provisioning Testing</li> <li>• Configure initial service offerings from Service Providers in OSS Systems</li> <li>• Provision initial services</li> <li>• Initiate Data Center Construction</li> <li>• Complete 94,000ft. Middle Mile construction</li> <li>• Initiate and Complete Network Provisioning Testing</li> <li>• Complete 35 Middle Mile Drops</li> </ul>	<ul style="list-style-type: none"> <li>• 4 construction crews</li> <li>• 1 drop crews</li> <li>• 1 splice crew</li> </ul>
Year 2	Qtr. 1	<ul style="list-style-type: none"> <li>• Complete 71,000ft. Middle Mile construction</li> <li>• Complete 26 Middle Mile Drops</li> </ul>	<ul style="list-style-type: none"> <li>• 3 construction crews</li> <li>• 1 drop crews</li> <li>• 1 splice crew</li> </ul>
	Qtr. 2	<ul style="list-style-type: none"> <li>• Complete 71,000ft. Middle Mile construction</li> <li>• Complete 26 Middle Mile Drops</li> </ul>	<ul style="list-style-type: none"> <li>• 3 construction crews</li> <li>• 1 drop crews</li> <li>• 1 splice crew</li> </ul>

	Qtr. 3	<ul style="list-style-type: none"> <li>Complete Data Center Construction</li> <li>Migrate BSS / OSS from temporary location to Data Center</li> <li>Complete 61,000ft. Middle Mile construction</li> <li>Complete 23 Middle Mile Drops</li> </ul>	<ul style="list-style-type: none"> <li>2 construction crews</li> <li>2 drop crews</li> <li>1 splice crew</li> </ul>
	Qtr. 4	<ul style="list-style-type: none"> <li>Migrate Core Network Equipment and Service Provider Peering Points to Data Center</li> <li>Complete 47,000ft. Middle Mile construction</li> <li>Complete 18 Middle Mile Drops</li> </ul>	<ul style="list-style-type: none"> <li>2 construction crew</li> <li>1 drop crews</li> <li>1 splice crew</li> </ul>
Year 3	Qtr. 1	<ul style="list-style-type: none"> <li>Complete 47,000ft. Middle Mile construction</li> <li>Complete 18 Middle Mile Drops</li> </ul>	<ul style="list-style-type: none"> <li>2 construction crew</li> <li>1 drop crews</li> <li>1 splice crew</li> </ul>
	Qtr. 2	<ul style="list-style-type: none"> <li>Complete 24,000ft. Middle Mile construction</li> <li>Complete 9 Middle Mile Drops</li> </ul>	<ul style="list-style-type: none"> <li>1 construction crew</li> <li>1 drop and splice crew</li> </ul>
	Qtr. 3	<ul style="list-style-type: none"> <li>Complete 9,000ft. Middle Mile construction</li> <li>Complete 4 Middle Mile Drops</li> </ul>	<ul style="list-style-type: none"> <li>1 construction crew</li> <li>1 drop and splice crew</li> </ul>
	Qtr. 4	<ul style="list-style-type: none"> <li>Complete Project, Drawdown remaining funds</li> </ul>	<ul style="list-style-type: none"> <li>Finish up</li> </ul>

**BUILD-OUT TIMELINE**

Complete the following schedule for *each* Middle Mile or Middle Mile Service Area to note the degree of build-out, based on: a) infrastructure funds awarded; b) entities passed (households, businesses, and community anchor institutions.). In addition, please complete a schedule that aggregates the build-out timeline across all of the Proposed Funded Service Area.

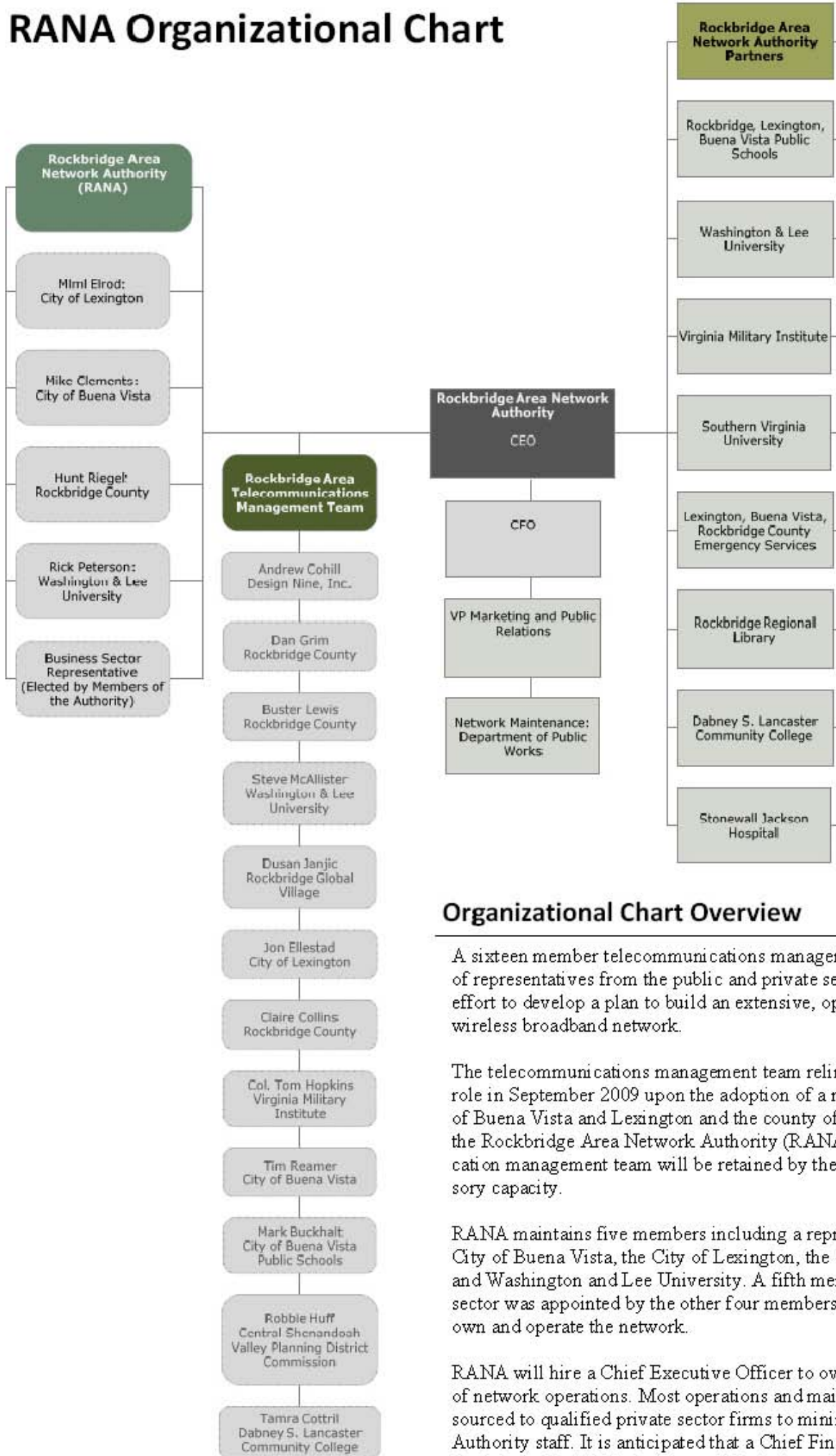
Service Area	RANA BTOP Round 2												
	YEAR 0	YEAR 1				YEAR 2				YEAR 3			
		Qtr. 1	Qtr. 2	Qtr. 3	Qtr. 4	Qtr. 1	Qtr. 2	Qtr. 3	Qtr. 4	Qtr. 1	Qtr. 2	Qtr. 3	Qtr. 4
Infrastructure Funds													
Infrastructure Funds Advanced (estimate)	200,000	900,000	900,000	1,000,000	1,300,000	1,300,000	1,200,000	1,100,000	900,000	500,000	300,000	200,000	198,385
Percentage of Total Funds	2%	11%	20%	30%	43%	56%	68%	79%	88%	93%	96%	98%	100%

Entities Passed & %													
New Households Passed				160	320	240	240	208	160	160	80	32	0
Percentage of Total Households				10%	30%	45%	60%	73%	83%	93%	98%	100%	100%
New Businesses Passed				30	60	45	45	39	30	30	15	6	0
Percentage of Total Businesses				10%	30%	45%	60%	73%	83%	93%	98%	100%	100%
New Community Anchor Institutions Passed				18	35	26	26	23	18	18	9	4	0
Percentage of Total Institutions				10%	30%	45%	60%	73%	83%	93%	98%	100%	100%

The estimate of Infrastructure Funds Advanced (estimate) in the above table is based upon the total cost of the project (including the cash match percentage of 30%) therefore if the above table is to be used for drawdown estimates the entries above should be multiplied by 70%.



# RANA Organizational Chart



## Organizational Chart Overview

A sixteen member telecommunications management team comprised of representatives from the public and private sector has guided the effort to develop a plan to build an extensive, open access fiber and wireless broadband network.

The telecommunications management team relinquished its leadership role in September 2009 upon the adoption of a resolution by the cities of Buena Vista and Lexington and the county of Rockbridge creating the Rockbridge Area Network Authority (RANA). The telecommunication management team will be retained by the authority in an advisory capacity.

RANA maintains five members including a representative from the City of Buena Vista, the City of Lexington, the County of Rockbridge, and Washington and Lee University. A fifth member from the business sector was appointed by the other four members. The authority will own and operate the network.

RANA will hire a Chief Executive Officer to oversee the management of network operations. Most operations and maintenance will be outsourced to qualified private sector firms to minimize the impact on Authority staff. It is anticipated that a Chief Financial Officer and Vice President of Public Relations and Marketing will be secured by RANA.

Biographical Information  
**A W “Buster” Lewis**

Born, Mercedes, TX, 1938

Bachelor of Business Administration, and Permanent Teachers Certificate,  
The University of Texas, 1961

Peace Corps Rural Community Development Volunteer, Colombia, 1961-1963

U. S. Peace Corps, South America and Washington D. C., 1963-1971

Gulf Oil Company/Latin America, Coral Gables, FL, 1972

Established Mountain View Farm Greenhouses, Rockbridge Baths, VA, 1972

Established The Jefferson Florist & Garden, Lexington, VA, 1983

Operated The Jefferson—Florist to The Homestead, 1984-2004

Rockbridge County School Superintendent’s Advisory Council, 1975-76

Rockbridge Area Conservation Council (RACC), Board Member, 1978-79

Rockbridge County Board of Supervisors, Candidate, 1979

Rockbridge County Democratic Committee, Chair, 1979

Brownsburg Ruritan Club, Secretary, 1981-83

Rockbridge County School Trustee Electoral Board, Chair, 1982

Fairfield Elementary School PTA, President, 1982

Rockbridge County Council of PTAs, Member, 1983

Henry Street Playhouse, Board Member, 1986

Lexington/Rockbridge County Chamber of Commerce, President, 1987

R E Lee Memorial Episcopal Church, Sr. Warden, 1988, 1992, 2000, 2001, 2002

Rockbridge County Planning Commission, Certified Commissioner, 1998-2004

Rockbridge Historical Society, Life Member

Brownsburg Community Association, Member

Virginia Congress of PTAs, Life Member Award, 1982

Virginia Greenhouse Growers Association, President, 1980

FTD Virginia District Chair, 1996-98

Virginia Professional Florist Association, State Treasurer, 2001-2002

Inducted into the Society of American Florists’ American Academy of  
Floriculture (AAF), 2000

Named Business Individual of the Year, Lexington/Rockbridge County Chamber of  
Commerce, 2005\*

Wife, Signe, Augusta County native, third generation RMWC

Son and Daughter-in-Law, Jay (in family business) and Amber (teacher, Maury River Middle  
School)

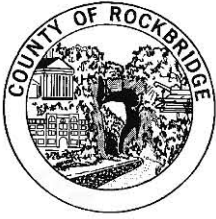


August 6, 2009

Dr. Andrew Michael Cohill is the President and CEO of Design Nine. He is a broadband architect with an extensive background in broadband network design and broadband planning. Cohill has been helping communities develop effective broadband strategies since 1993, when he began directing the start of the Blacksburg Electronic Village, the world's first Internet-based community broadband project. Cohill has an international reputation for his work advising communities on broadband and telecommunications issues. In the United States, he has worked with clients across the country, with recent work in Minnesota, South Carolina, New Hampshire, Virginia, Illinois, New Mexico, Louisiana, Pennsylvania, and Texas, and is currently working on broadband feasibility studies and on the design and engineering of fiber build-outs in eight states.

Advanced education and training in architecture, computer science, and ergonomics, along with more than thirty years experience in business, academia, and the telecommunications industry enables him to develop creative and fresh solutions to community challenges and opportunities. He has worked for both large and small businesses, and in the eighties worked for AT&T on a variety of telecommunications and technology projects. He founded Design Nine in 1987 to provide technology advice and services to communities, government, and businesses.

- He is a widely published writer, and author and co-editor of the popular book about Blacksburg (*Community Networks: Lessons learned from Blacksburg, Virginia*). His numerous papers and reports are widely circulated, and his technology news blog ([www.designnine.com/news](http://www.designnine.com/news)) has thousands of readers per month. He is a popular speaker on community broadband issues, economic development, and technology because of his clear explanations, shrewd insights, and engaging manner.
- Cohill is an adjunct faculty member of the Urban Planning department at Virginia Tech and teaches a graduate class on broadband planning.
- Cohill served four years on the Board of Directors of the Association For Community Networking (AFCN), and completed two terms as President of the AFCN.
- He has served on the Board of Directors of the Rural Telecommunications Congress. He has been on the Advisory Board of Communities of the Future since 1997, and works regularly with the COTF on joint projects.
- In 2000-2001, he designed, developed, and managed Hewlett-Packard's \$15 million Digital Villages initiative. More than 220 communities submitted proposals that were reviewed and analyzed by Cohill and his project team.
- During 2000-2001, he was co-chair of the Virginia Governor's Task Force on eCommunities. The group published an extensive guide to broadband initiatives that was aimed primarily at small and rural communities.
- In 2001, he was one of small handful of technical experts asked to review and comment on the National Research Council's comprehensive study and book, *Broadband: Bringing Home the Bits*.



# County of Rockbridge

## Office of County Administrator

150 South Main Street

Lexington, Virginia 24450

CLAIRE A. COLLINS

*County Administrator*

Office: (540) 463-4361

Fax: (540) 463-4346

[claire\\_collins@co.rockbridge.va.us](mailto:claire_collins@co.rockbridge.va.us)

Website: [www.co.rockbridge.va.us](http://www.co.rockbridge.va.us)

MACK R. SMITH

Buffalo

Magisterial District

RUSSELL S. FORD

Kerrs Creek

Magisterial District

R. HUNT RIEGEL

Natural Bridge

Magisterial District

CARROLL R. COMSTOCK

South River

Magisterial District

ALBERT W. LEWIS, JR.

Walkers Creek

Magisterial District

Claire Collins

County Administrator, County of Rockbridge

### Professional Experience:

21 years of Virginia local government experience beginning in Henrico County as Assistant to County Manager for 4 years and first public affairs officer/legislative liaison, serving as County Administrator of Bath for 14 years, City Manager of Covington for 2 years, and County Administrator of Rockbridge since September 2008

11 years of private sector experience

8 year recognized ICMA Credentialed Local Government Manager

### Honors and Education:

ICMA Gettysburg Foundation Leadership Institute and University of Virginia Senior Executive Institute

MPA from Virginia Commonwealth University and recognized as Distinguished Alumnus Star and Alumni Board of Directors Emeritus

BA in Political Studies from North Carolina Wesleyan College including University of Aberdeen, Scotland

Phi Kappa Phi, Phi Alpha Alpha, Omicron Delta Kappa

### Service for and to Community:

Rotary

Virginia Economic Development Association

Past President of Virginia Local Government Managers Association

Co-founder of Shenandoah Valley Partnership serving on Board of Directors

ICMA

Sorenson Institute for Political Leadership Regional Board of Directors

Virginia Resources Authority Community Investment Advisory Council Chair

Numerous boards and commissions and public professional presentations and publications

Daniel Ray Grim

**Current:**

**Rockbridge County Planning Department      February 1999-present**  
**150 S. Main St. Lexington, VA 24450**

**GIS Manager:**

Manages all aspects of GIS for Rockbridge County Administration

Identify, recommend, implement, configure and maintain all GIS hardware and software

Maintain GIS databases in AutoCAD Map and ArcServer SQLexpress

Provide GIS application support to end-users in all County offices, public safety, State and Federal government offices and the general public

Design layout methods for creation of user-specified hard copy maps and graphic products

Use different equipment such as digitizer, plotter, color printer, camera, and mapping grade GPS to store and collect GIS related information

Chairman Rockbridge Area Telecommunications Team 2009

Two years experience on Telecommunications Team

**Publications:**

maps for Rockbridge County Comprehensive Plan 2007

maps for Rockbridge County Groundwater Study 2004 Fritz VanDerLeeden

maps for Roads of Rockbridge Rockbridge Historical Society 2009

**Anderson and Associates Inc.      1994-1999**

**100 Ardmore St. Blacksburg, VA**

**GIS Technician/Drafting Room Specialist**

Digitized all Rockbridge County Public Service Authority infrastructure into GIS

Managed E911 address notification process for residents of Smyth County, VA

Operated all aspects of drafting room for Engineers

**Education:**

**B.A. in Geography from Virginia Polytechnic and State University (1992)**

**A.S. with honors biology from Dabney S. Lancaster Community College (1988)**



Design Nine provides broadband planning, engineering, network deployment, and project management in the same way that architects and planners offer services for building and community development projects. We provide a single point of contact for the client throughout the various phases of the effort.

Design Nine's comprehensive approach to successful broadband projects ensures that communities have the systems and processes in place at the end of the construction phase to successfully manage the network and to keep the effort financially viable for decades. Design Nine has an extensive set of resources and processing systems we use to meet client needs, including:

**GIS and Mapping** – In-house, state of the art GIS systems and expert technicians can provide a full range of asset mapping, fiber and wireless infrastructure layout, and demand aggregation studies.

**Legal Counsel** -- Our telecom attorneys can provide a full range of incorporation documents, leases, service provider contracts as needed to meet local and state laws.

**Vendor and Equipment Selection** -- Design Nine maintains a large collection of materials on current systems and technologies that we use to help identify appropriate solutions for a community broadband project.

**Project Management** -- Design Nine has a well-defined project management (PM) process that is used in every planning effort. More than 120 staff years of experience with technology and community broadband projects enables us to manage and track projects effectively, and we use state of the art PM software and systems.

**Business Cases and Financial Models** -- Design Nine has sophisticated financial analysis tools to provide detailed ten year financial projections for a proposed broadband system. Inputs and outputs include take rates, prices for services, income and revenue projections, cost of capital, capital expenditures, operational expenditures, staffing projections, cash flow analysis, loan and grant considerations, fully integrated fiber and wireless system buildout costs and income projections, and three tier market projections (residential, business, and government).

**Operations and Management** -- Design Nine assists clients with set up of the business processes and staffing, including advice on billing systems, management policies, contracts, procurement, and operations. During the build out phase, Design Nine can provide inventory management, change order management, vendor performance management, site inspection, system certification, and lease and right of way management.

**Survey and Focus Group Tools** -- Design Nine has a wide variety of survey, interview, and focus group data collection and assessment tools that can be used to collect data as required.

**Public Awareness/Strategic Marketing** -- Design Nine can develop marketing plans and strategies to increase public awareness and improve take rates. Design Nine has a graphic designer to assist with preparing handouts, brochures, posters, and reports.

Design Nine, Inc. 2000 Kraft Drive, Suite 2180 Blacksburg, VA 24060 <a href="http://www.designnine.com">www.designnine.com</a> 540-951-4400
---

## Experience

### President

1996-Present Virginia Global Communication Systems, Lexington, VA.

- Founder. Company founded in 1996. Licensed in state of Virginia as a CLEC (Competitive Local Exchange Carrier).
- Responsible for daily operations.
- Company offers advanced telecommunications services in the region.
- Technical operations.
- Network design and implementation.
- Network maintenance.
- Network and service provisioning.
- Interconnection agreements with incumbent carriers.
- Federal, state compliance and regulations.
- New products research development and implementation.

### President

1994-Present Rockbridge Global Village, Lexington, VA

- Founder. Company founded as one of the first ISP's (Internet Service Providers) in state of Virginia.
- Responsible for daily operations.
- Company offers broadband and dial up Internet services.
- Network design and management.
- Hosted and premise VoIP PBX systems.
- Local Area Networks, VPN and wireless networks.
- Wide Area Network (WAN) and LAN IP security..
- Daily technical operations, routing, switching.
- Service provisioning, high level customer support
- Responsible for development, implementation, deployment and maintenance of virtually every service offered by the company.

### Founder

1995 Virginia ISP Alliance, (VISPA)

- Industry association.
- One of the first Internet Service Providers Associations in the country.
- Lifetime board of directors' member.

## Education

University Of Belgrade, Belgrade Serbia


1974-1979

- Analytical Chemistry major.
- Business and economics minor

## References

References are available on request.

## Gregg B. Amonette



In his 25 year career, Gregg has served as a public corporation officer, business development, and sales and marketing executive at fast growing, market-leading companies including Ultimate Escapes, SNL Financial, Reuters, Multex, CSK Corporation, and ADP, all of which were early adopters or became significant users of the internet and broadband infrastructure and technologies.

### Ultimate Escapes, LLC. 2006 to present. SVP Business Development.

Company is second largest and only publicly traded destination club in the industry with 1200 members, 130 multi-million dollar homes in 45 resort destinations. UE has a significant corporate web presence and uses broadband web-based presentation tools, lead gathering, reservations management system and prospect-client relationship management.

### SNL Financial LC. 2003-2006. Director of Marketing.

Company disseminates financial data, news and analysis for six sectors: banking, financial services, insurance, real estate, energy and media/communications. Headed global marketing. All databases and subscription services are delivered via broadband internet.

### Multex.com, Inc. 1996-2003. EVP Global Products.

Multex.com, Inc. became the leading distributor of sellside research, data and analysis to buy-side institutional firms. Joined as VP of Sales in 1996 when company had revenue of \$1 million. Company went public March, 1999. Peak valuation over \$1 Billion; peak revenues over \$90 million. Company acquired by Reuters PLC in 2003. Multex was first financial services content and technology company to go 100% web-based.

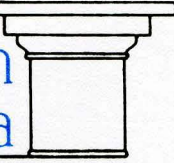
### CSK Corporation. 1994-1996. VP and General Manager, North America.

Company was producer of application software and hardware for trading floors. Responsible for all sales, marketing as well as P & L for North American (Micrognosis) division of global Japanese corporation. Engineers and R & D used internet as early as 1995 for collaboration with offices in NY, Dublin and Tokyo.

### Automatic Data Processing. 1984-1994. VP of Retail Sales, Brokerage Services Division.

Company is world's largest payroll company and prior to recent spin-off (Broadridge Financial), the largest provider of brokerage back-office processing and front-office market data services. Responsible for front and back office sales to retail brokerage industry. Too early for internet then, but today majority of services today delivered via web.





**Resume**  
**T. Jon Ellestad**

**Employment**

**City Manager, City of Lexington, VA**  
**1990-present**

**Assistant City Manager, City of Fairfax, VA**  
**1982-1990**

**Assistant to the Town Manager, Town of Blacksburg, VA**  
**1977-1982**

**Administrative Assistant to the City manager, City of Newark, DE**  
**1974-1977**

**Education**

**B. A. History, University of Wisconsin - Madison 1971**  
**M.A. - Urban Affairs, University of Delaware 1974**

## *Bio for Mimi Elrod*

**Mimi Elrod** was employed at Washington and Lee University from 1986 until 2008, following her late husband, President John W. Elrod, to Lexington when he joined the University as Dean of the College and professor of philosophy. She headed the Summer Scholar's program from 1990 until 2008, previously working with the admissions office and teaching at Dabney Lancaster Community College. Before joining W&L, Elrod earned her M.S. and PhD degrees at Iowa State University in Ames Iowa. At Iowa State she served as an assistant professor teaching in the departments of Psychology and Child Development and consulted for the department of Health and Human Services in Iowa and Washington, D.C. Between 1979 and 1984, she served on review panels for Head Start in Washington D.C. reading proposals for new programs as well as additions to existing programs. She made numerous presentations at professional conferences, conducted numerous research projects, wrote successful grant proposals, and published articles in referred journals. Before earning her graduate degrees she taught in the New York City Public School System, worked in the system's after school program, and was employed at a summer camp for children in Spanish Harlem.

An educator, civil rights activist, and mental health advocate, she has been a leader in domestic violence prevention, mental health, and other community organizations. She served as a volunteer on the hot line for Project Horizon and served as president of the Project Horizon board for four terms. She has served as chair of the Rockbridge Area Community Services Board and the Mental Health Association and has been a board member of the Association for Retarded Citizens, Habitat for Humanity's Advisory Board, Yellow Brick Road Child Care Center. and since 2004 has served as a judge at Virginia Foundation for Independent Colleges' annual "Ethics Bowl." She was a member of the inaugural class of LEADVA in 2005.

At Washington and Lee, she serves on the Shepherd Poverty Program's Alumni Committee and served as an advisor to Women in Technology & Science and Chi Omega. She was tapped into membership of Omicron Delta Kappa in 1999. She is an elder at the Lexington Presbyterian Church, and was part of a medical mission trip to Haiti in 1999.

In July 2003, Elrod was appointed by Governor Mark Warner to the State Council of Higher Education for Virginia and in 2007 was reappointed by Governor Tim Kaine to that eleven-member board. She currently serves on the Rockbridge Area Free Clinic Board. A member of the Rockbridge Area Network Authority, she served on Lexington's City Council from 2003 until December 2009 and is currently Mayor of Lexington.

## R. HUNT RIEGEL

Ph. D., Educational Psychology, University of Minnesota, 1972.  
M.Ed., Special Education, Univ. of Virginia, 1968., B.A., English, Univ. of Virginia, 1966.

**CURRENT:** Supervisor, Rockbridge County Board of Supervisors.  
Chairman, Rockbridge Area Network Authority

**CONSULTATION (1982-2008):** Director, RHR Consultation Services.

- Consultant with 15 state departments of education and over 200 local and intermediate school districts on mainstreaming and the improvement of instructional delivery.
- Director: Project ACCESS. A state-initiated project on microcomputers in special education.
- Director: Michigan's Assistive Technology Clearinghouse.
- Consulting Director, Michigan's State Improvement Grant.
- 

**ADMINISTRATION (1977-1982):** Director, Model Resource Room Project, and Supervisor of Special Education, Plymouth, Michigan.

Designed and directed federal project to implement systematic planning and communication procedures for special education and regular education professional staff. Developed staff communications procedures and materials adaptations for regular classroom teachers.

**TRAINING (1973-1977):** Coordinator, Learning Disabilities Training Program, Western Michigan University, Kalamazoo, Michigan.

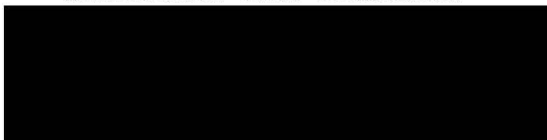
**TEACHING (1967-1969):** Head Teacher, Adjustment Program, Norfolk Public Schools, Norfolk, Virginia.

Initiated and served as Coordinator and Head Teacher for program for "maladjusted" and learning disabled children in both self contained and resource room settings.

**OTHER:** Consultant for curriculum development groups in three districts, and evaluator of special projects in nine others. Authored or co-authored research and training reports, resulting in 9 national publications and 27 technical reports. Edited two statewide newsletters (circulation 2,000 and 18,000 respectively) and eight special focus Bulletins for state organization. Wrote software for generating materials for students with special needs. Wrote grants for state and federal projects totaling \$12.5 million between 1970 and the present. Directed state project on Teaching Learning Disabled Students in the Regular Class for the Michigan Department of Education. Directed statewide institute to revise guidelines for identifying students with learning disabilities. Directed statewide institutes to develop guidelines for co-teaching in regular classrooms.

Formal presentations: Keynote speaker at four statewide conferences. Workshop trainer at 10 national conferences and 39 statewide conferences, and over 370 training workshops. A full vita is available on request.

**RICHARD A. "Rick" PETERSON**



**PROFESSIONAL EXPERIENCE**

- 2007 - Present**      **WASHINGTON & LEE UNIVERSITY**      Lexington, Virginia  
**Chief Technology Officer**
- Provide university-wide vision and leadership in information technology.
  - Lead 34 staff members, providing institutional support for information technology services, including telecommunication.
  - Develop and execute IT strategic plan with integrated budget in support of institutional mission.
- 2005 - 2007**      **RICE UNIVERSITY**      Houston, Texas  
**Director of Academic and Research Computing**
- Provide university-wide vision and leadership in academic and research computing areas.
  - Lead 44 staff members, providing distributed technology support, departmental specific systems management, educational technology services, media services, central help desk and training services, and research computing support services.
  - Charged with improving customer support and IT reputation, establishing service level agreements in core services, research computing, classroom, and undergraduate support areas, creating an open-source learning and collaboration environment, and moving the university forward in integration of technology into the teaching and learning environment.
  - Co-lead on \$700,000 IBM/Rice Shared University Research (SUR) grant to develop an open-source collaboration and learning environment for higher ed.
- 1999–2005**      **UNIVERSITY OF NORTH CAROLINA at CHAPEL HILL**      Chapel Hill, NC.  
**Director of Information Technology, College of Arts & Sciences**
- Provide vision, leadership, and technical management in all information technology areas for the College of Arts & Sciences.
  - Satisfy technology needs of approximately 1200 faculty and staff in 67 departments/units.
  - Created a new, professional, College-level IT organization from scratch. Expanded department from three (3) full-time staff to over 25. Created client & systems services, academic technologies, and application development groups, developed and defended initial and ongoing budgets, and successfully located departmental space to support expansion.
- 1993–1999**      **RANDOLPH-MACON WOMAN'S COLLEGE**      Lynchburg, VA.  
**Director of Computer Services**
- 1991-1993**      **CALIFORNIA INSTITUTE OF INTEGRAL STUDIES**      San Francisco, CA.  
**Director of Information Systems and Technology**
- 1977-1991**      **PAST EXPERIENCE**
- Gained experience as a software engineer, manager, and high school mathematics teacher and basketball coach

- EDUCATION**
- 1990-1993**      **MASTER OF ARTS – ORGANIZATIONAL DEVELOPMENT AND TRANSFORMATION**
- **CALIFORNIA INSTITUTE OF INTEGRAL STUDIES**      San Francisco, CA
  - Thesis: designAid: A Multimedia Tool for Appreciative Organization Design
- 1976-1981**      **BACHELOR OF SCIENCE – COMPUTER SCIENCE ENGINEERING**
- **NORTHWESTERN UNIVERSITY**      Evanston, IL.
  - McCormick School of Engineering Cooperative Engineering Program Graduate.
  - Senior Executive of Theta Delta Chi Fraternity.

Steven G. McAllister

**Employment History**

**Washington and Lee University, Lexington, VA**

**Treasurer and Vice President for Finance, July 2002 to Present**

**Associate Vice President for Finance, July 2000 to July 2002**

**Director of Budgets and Financial Planning, July 1998 to July 2000**

**Assistant Treasurer, July 1993 to July 1998**

- Oversight of financial, human resource and facility matters of the University including but not limited to \$115 million annual operating budget, \$625 million endowment, \$90 million portfolio of deferred giving instruments for which the University serves as Trustee, \$200 million physical plant and 850 full-time faculty and staff.
- Divisional oversight includes seven direct reports and over 150 total employees.
- Served as Co-Chair of the Strategic Planning Task Force on Financial Resources. The committee's objective is to review the work of other task forces to financially quantify the objectives that each committee outlines, develop a process for evaluating the objective and outlining a financing plan that will advance the priorities developed in an orderly and prudent manner.
- Serve as primary staff support to Finance Committee (which includes Audit subcommittee) and Investment Committee of the Board of Trustees.
- Responsible for preparing all necessary institutional documents for five tax-exempt borrowings totaling \$120 million. This has included representing the University to rating agencies and debt authorities.

**Randolph-Macon Woman's College, Lynchburg, VA**

**Business Manager, July 1991 - June 1993;**

**Director of Budget/Assistant to Vice President**

**for Finance and Administration, January 1990 - June 1991;**

**Assistant to the Director of Business Affairs, March 1986 - December 1990**

- Had direct responsibility for preparing and reporting revenue and expense operating budgets to departmental administrators, Administrative Council, and Board of Trustees.
- Responsible for developing and updating Five Year Budget Projection Model which was utilized for annual budget planning and included assumptions regarding enrollment, tuition and fees, salaries, gifts, and endowment growth and payout.
- Performed studies on student aid, faculty salaries, external relations and admissions as directed by President of the College.
- Member of task force assigned to review entire operations of the business affairs division in order to assess efficiency of the organization and identify areas where cost savings could be achieved.
- Developed with Coordinator of Office Services a Student Telephone System which provided students a lower cost of service while providing the College additional revenue.

**Educational Background**

Roanoke College, Salem, VA 24153

B.A. in Economics 1986, with second major in Business Administration

Lynchburg College, Lynchburg, VA 24502

M.B.A. 1997

**Community Service**

President/Treasurer - Rockbridge Area Habitat for Humanity

August 1996 to July 2001

Board of Directors - Lexington Downtown Development Association

July 1998 to January 2005; President in 2001 and 2002

Board of Directors - Rockbridge Regional Library Foundation

August 1998 to July 2003

Board of Directors - Lexington Rockbridge Chamber of Commerce

January 2007 to present; President in 2008

# Tamra Cottrill

---

## EDUCATION

M.B.A., Strayer University – Outstanding Graduate Award  
B.S. Computer Information Systems, Strayer University  
A.A.S. Computer Information Systems, Northern Virginia Community College

---

## PROFESSIONAL ACCOMPLISHMENTS

**Dabney S. Lancaster Community College, Buena Vista, VA** *JUNE 2002 – PRESENT*  
**Director, Rockbridge Regional Center (March 2004-Present)**

- In charge of all aspects of the operation and management of the Rockbridge Center.
- Supervise and direct the work of the team.
- Provide academic advising in various modes: live, on-line, phone and e-mail.
- Provide technical support for Interactive Video classrooms and technologies used at the College.
- Serve on DSLCC internal committees.
- Promote DSLCC through speaking engagements and recruiting efforts.

**Adjunct Instructor (June 2002-Present)**

- Courses taught include: Basic Computer Literacy, Introduction to Networking, Non-Credit eBay courses, Cisco I, II, III & IV and The Fundamentals of Unix.

**Family Management and Relocation** *April 2001 – June 2002*

**AT&T Solutions/Government Markets, Oakton, VA** *MARCH 1997 - MARCH 2001*  
**Project Manager/Consultant/Technical Support Engineer**

- Planning, implementation, configuration, testing, documentation, training and tier III support for two network security systems, utilizing Cisco Secure and SecurID, in an IP over ATM nationwide network. Router and switch maintenance, security and technical writing.
- Developed an MS Access database to convert raw data from Cisco Secure into reports which detailed user access and configuration changes for each router.
- Developed and maintained the web site for the DISC Program.
- Chaired weekly meetings with the Program Management Office, Customer Care, Access and Engineering. Assigned ownership of various tasks to individuals to ensure project completion. Coordinated with Customers, Engineering, Program Management Staff, Network Operations Center (NOC), Lease Groups, and the LEC's to ensure circuit order completion. Worked with the various owners to more clearly define and improve the process of circuit ordering and implementation.
- Provided project management, consulting, and technical support for various clients. Highlights include: project management support for a large major financial institution that included 23 Latin American Countries and 2 U.S. sites as part of a global network deployment.
- Participated in the development of a 5 million dollar technology lab which included installation and configuration of many different platforms such as Novell, HP-UX, Sun Solaris and Windows NT.
- Developed Deployment Plans. Managed the transition from a single lab version of a solution to multiple fielded copies, managed logistics, integration, staging and provisioning.
- Performed site surveys in support of costing, design, and site preparation activities.
- Managed outside vendors and contractors in performing all facets of installation including, procurement, construction, equipment staging and installation

**GTE Government Systems, Arlington, Virginia** *FEBRUARY 1996 - MARCH 1997*  
**System Engineer/Technical Lead**

**CSDC, Chantilly, Virginia** *JULY 1995 - FEBRUARY 1996*  
**Technical Support**

**Vitro Corporation, Manassas, Virginia** *DECEMBER 1987 - JULY 1995*  
**System Engineer/Technical**

# TIMOTHY T. REAMER

---

## EXPERIENCE

---

### **City of Buena Vista (Buena Vista, Virginia)**

#### **Director of Economic Development—2006-Current**

- Developed and executed economic development and community development strategies, policies, and initiatives.
- Oversaw departmental activities and staff that included economic development, planning, zoning, building inspection, and code enforcement.
- Acted as a primary representative in the sales, marketing, and development of public land and buildings.
- Developed and implemented programs that generated revenue and saved expense for the City of Buena Vista.
- Created a framework for an effective partnership between private enterprise and local government.
- Provided market analysis, site selection assistance, and incentive packages for industrial prospects.
- Developed a three-year business and industrial recruitment strategy for the City of Buena Vista.
- Performed financial analysis to determine economic feasibility for public/private development projects.

#### **Key Achievements**

- Attracted over \$2 million in direct capital investment through public/private partnerships and real estate sales.
- Recruited four large employers creating 165 new jobs and \$2.3 million capital investment.
- Established a low interest revolving loan pool to assist in recruitment and retention of businesses leveraging approximately \$750,000 in investment.
- Implemented a Curbside Recycling program in conjunction with local industry generating savings for Buena Vista.
- Successfully obtained a historic district designation providing tax credits for the central business district.
- Obtained nearly \$250,000 in grant funding to aid the small business community and infrastructure development.
- Assisted in developing a new comprehensive plan and eliminating land use policy that inhibited development.
- Implemented a comprehensive new branding strategy for multiple City departments and the business community.

### **Broadway Hometown Partnership (Broadway, Virginia)**

#### **Executive Director—2001-2006**

- Created and implemented programs to increase revenues for the organization and businesses.
- Developed and conducted an ongoing marketing campaign to increase economic and social awareness.
- Conducted market analysis and developed a business recruitment strategy for the Town of Broadway.

#### **Key Achievements**

- Reduced the vacancy rate from 13% to 0% and assisted in the development of three commercial structures.
- Implemented business assistance programs resulting in 12% gross revenue increases annually.
- Featured in the 2003 USDA Annual Report for innovative use of grant funding (Rural Business Enterprise Grant).
- Finalist for the National Grassroots Entrepreneurship Award by the National Center for Small Communities.
- Featured in two case studies for development techniques—University of Minnesota and Iowa St. University.

## EDUCATION

---

### **MARYMOUNT UNIVERSITY, ARLINGTON, VIRGINIA**

Bachelor of Arts, Summa Cum Laude

### **FLORIDA STATE UNIVERSITY, TALLAHASSEE, FLORIDA**

MBA, Real Estate Finance and Analysis

## BTOP Comprehensive Community Infrastructure Service Area Template

Please complete the complete the CCI Service Area worksheet. In each line you will provide name of a service area and one of the contiguous Census tracts or block groups that make u service area. Please provide full 11-digit Census tract numbers, includes the 2-digit State FIF the 3-digit county code, followed by a unique 6-digit tract number. For Census block group: please provide the full tract number, plus the 1-digit block group number (12 digits total). If more than one Census tract or block group in a service area, there will be multiple lines in th for that service area. It is critical that the service area names provided in this table match w service area names provided in the Service Area Details page of the application. Please revie document and Service Area Details page for consistency before submitting your application.

Important Note: Excel truncates leading zeros from numbers. Consequently, the tract/block column on the worksheet has been formatted as text. This formatting should not be altered validity of your data may be compromised.

The data provided via this template will be subject to automated processing. Applicants are therefore required to provide this upload as an Excel file, and not to convert it to a PDF prior upload. Additionally, applicants should not modify the format of this file (*e.g.* by adding or removing worksheets). Do not leave blank lines in the table between service areas.

### EXAMPLE

Service Area Name	Tract or Block Group #
Big BB Project South	01001020100
Big BB Project South	01001020100
Big BB Project South	010010202001
Big BB Project West	01001020400
Big BB Project North	01001020800
Big BB Project North	010010209002



the  
p that  
PS code,  
s,  
there is  
ne table  
ith the  
ew this

c group  
d, or the

r to

**BTOP CCI Service Area Template**

Title: **Connecting the Dots: Rockbridge Broadband Initiative**  
Easy Grants ID: **6689**

Service Area Name	Tract or Block Group #
Rockbridge Middle Mile	515309906001
Rockbridge Middle Mile	515309906002
Rockbridge Middle Mile	515309906005
Rockbridge Middle Mile	515309906006
Rockbridge Middle Mile	516789905001
Rockbridge Middle Mile	516789905002
Rockbridge Middle Mile	516789905003
Rockbridge Middle Mile	516789905004

## **BTOP Comprehensive Community Infrastructure Community Anchor Institution and Network Points of Interest Detail Template**

Please complete the Anchor Institution Details worksheet by providing information on all Community Anchor Institutions that will be directly connected by the proposed network. Add rows as necessary. All Community Anchor Institutions should be given a type from the specified list. A Community Anchor Institution is considered a minority-serving institution if it is a post-secondary educational institution with enrollment of minority students exceeding 50% of its total enrollment. The "Project Role" column only requires a word or two, or a short phrase, not a detailed explanation. A detailed explanation of the role of project partners and community anchor institutions should be provided in the essay portions of the application.

Please complete the Points of Interest worksheet by providing information on all points of interconnection (passive, non-environmentally controlled points of interconnection, *e.g.* splice points, may be excluded), collocation facilities, central offices, head ends, and other centralized facilities, network access points to last mile service providers, Internet peering points, and towers. For each point of interest you may provide either a street address or geocoordinates or both. You must provide detail on what the point of interest is, whether it is already existing or would be created by the proposed project. Where more than one facility type applies, select the larger facility type. For example, if a central office houses a point of interconnection, select central office as the facility type, or if a cell site is located on a tower, select tower as the facility type. The Interconnection Available at the Facility field should be Yes if interconnection to the proposed network is available at that location, otherwise No. The brief description field is optional, but may be used to convey a better understanding of what the facility is. You may use the space provided at the bottom of the table to provide additional notes, if desired.

**The data provided via this template will be subject to automated processing. Applicants are therefore required to provide this upload as an Excel file, and not to convert it to a PDF prior to upload. Additionally, applicants should not modify the format of this file.**

### BTOP CCI Community Anchor Institutions Detail Template

Title: **Connecting the Dots: Rockbridge Broadband Initiative**

Easy Grants ID: **6689**

Facility Name	Organization	Address Line 1	City	State	Zip	Facility Type	Minority Serving Institution Type	Project Role
Central Elementary School	School	85 Central Rd.	Lexington	Va	24450	School (k-12)		Anchor
Waddell Elementary School	School	100 Pendelton Pl.	Lexington	Va	24450	School (k-12)		Anchor
Maury River Middle School	School	600 Waddell St.	Lexington	Va	24450	School (k-12)		Anchor
Lylburn Downing Middle School	School	300 Diamond St.	Lexington	Va	24450	School (k-12)		Anchor
Rockbridge Conty High School	School	143 Greenhouse Rd.	Lexington	Va	24450	School (k-12)		Anchor

### BTOP CCI Network Points of Interest Detail Template

Title: Connecting the Dots: Rockbridge Broadband Initiative  
 Easy Grants ID: 6689

Facility Type	Address Line 1	City	State	Zip	Longitude	Latitude	Interconnection Available at this Location	Status in Proposed Network
Last Mile Network Access Point	645 Waddell St.	Lexington	Va	24450			Yes	Existing - Other
Last Mile Network Access Point	820 S. Main St.	Lexington	Va	24450			Yes	Existing - Other
Last Mile Network Access Point	714 S. Main St.	Lexington	Va	24450			Yes	Existing - Other
Last Mile Network Access Point	101 S. Main St.	Lexington	Va	24450			Yes	Existing - Other
Last Mile Network Access Point	45 S. Main St.	Lexington	Va	24450			Yes	Existing - Other
Last Mile Network Access Point	54 S. Main St.	Lexington	Va	24450			Yes	Existing - Other
Last Mile Network Access Point	163 W. Nelson St.	Lexington	Va	24450			Yes	Existing - Other
Collocation Facility	W. Denny Cir	Lexington	Va	24450			Yes	New For Proposed Network
Last Mile Network Access Point	106 E. Washington St.	Lexington	Va	24450			Yes	Existing - Other
Last Mile Network Access Point	115 W. Nelson St.	Lexington	Va	24450			Yes	Existing - Other
Last Mile Network Access Point	506 E. Nelson St.	Lexington	Va	24450			Yes	Existing - Other
Last Mile Network Access Point	537 E. Nelson St.	Lexington	Va	24450			Yes	Existing - Other
Tower (cell site)	30 S. Main St.	Lexington	Va	24450			Yes	Existing - Other
Last Mile Network Access Point	735 Borden Rd.	Lexington	Va	24450			Yes	Existing - Other
Tower (cell site)	735 Borden Rd.	Lexington	Va	24450			Yes	Existing - Other
Tower (cell site)	396 E. Midland Trl.	Lexington	Va	24450			Yes	Existing - Other
Last Mile Network Access Point	401 E. Nelson St.	Lexington	Va	24450			Yes	Existing - Other
Last Mile Network Access Point	1664 Magnolia Ave.	Buena Vista	Va	24416			Yes	Existing - Other
Last Mile Network Access Point	225 S. Magnolia Ave.	Buena Vista	Va	24416			Yes	Existing - Other
Last Mile Network Access Point	1221 Magnolia Ave.	Buena Vista	Va	24416			Yes	Existing - Other
Last Mile Network Access Point	302 Piedmont Ave.	Buena Vista	Va	24416			Yes	Existing - Other
Last Mile Network Access Point	1400 Sycamore Ave.	Buena Vista	Va	24416			Yes	Existing - Other
Last Mile Network Access Point	2450 Beech Ave.	Buena Vista	Va	24416			Yes	Existing - Other
Last Mile Network Access Point	2453 Beech Ave.	Buena Vista	Va	24416			Yes	Existing - Other
Last Mile Network Access Point	110 W. 21St St.	Buena Vista	Va	24416			Yes	Existing - Other

Facility Type	Address Line 1	City	State	Zip	Longitude	Latitude	Interconnection Available at this Location	Status in Proposed Network
Last Mile Network Access Point	148 W. 20th St.	Buena Vista	Va	24416			Yes	Existing - Other
Last Mile Network Access Point	2019 Forest Ave.	Buena Vista	Va	24416			Yes	Existing - Other
Last Mile Network Access Point	318 W. 29th St.	Buena Vista	Va	24416			Yes	Existing - Other
Last Mile Network Access Point	962 Magnolia Ave.	Buena Vista	Va	24416			Yes	Existing - Other
Last Mile Network Access Point	2443 Beech Ave.	Buena Vista	Va	24416			Yes	Existing - Other
Last Mile Network Access Point	149 W. 21St St.	Buena Vista	Va	24416			Yes	Existing - Other
Last Mile Network Access Point	1002 Magnolia Ave.	Buena Vista	Va	24416			Yes	Existing - Other
Last Mile Network Access Point	2293 Magnolia Ave.	Buena Vista	Va	24416			Yes	Existing - Other
Last Mile Network Access Point	2107 21St St.	Buena Vista	Va	24416			Yes	Existing - Other
Last Mile Network Access Point	2101 Forest Ave.	Buena Vista	Va	24416			Yes	Existing - Other
Last Mile Network Access Point	2141 Sycamore Ave. Ste C	Buena Vista	Va	24416			Yes	Existing - Other
Last Mile Network Access Point	141 21St St.	Buena Vista	Va	24416			Yes	Existing - Other
Last Mile Network Access Point	2603 Beech Ave.	Buena Vista	Va	24416			Yes	Existing - Other
Last Mile Network Access Point	2101 Sycamore Ave.	Buena Vista	Va	24416			Yes	Existing - Other
Last Mile Network Access Point	1036 Magnolia Ave.	Buena Vista	Va	24416			Yes	Existing - Other
Last Mile Network Access Point	608 W. 29th St.	Buena Vista	Va	24416			Yes	Existing - Other
Last Mile Network Access Point	174 W. 29th St.	Buena Vista	Va	24416			Yes	Existing - Other
Last Mile Network Access Point	524 W. 29th St.	Buena Vista	Va	24416			Yes	Existing - Other
Last Mile Network Access Point	1340 Magnolia Ave.	Buena Vista	Va	24416			Yes	Existing - Other
Last Mile Network Access Point	383 W. 29th St.	Buena Vista	Va	24416			Yes	Existing - Other
Last Mile Network Access Point	2717 Beech Ave.	Buena Vista	Va	24416			Yes	Existing - Other
Last Mile Network Access Point	2150 E. Midland Trl.	Buena Vista	Va	24416			Yes	Existing - Other
Last Mile Network Access Point	1954 Sycamore Ave.	Buena Vista	Va	24416			Yes	Existing - Other
Last Mile Network Access Point	1480 Magnolia Ave.	Buena Vista	Va	24416			Yes	Existing - Other
Last Mile Network Access Point	447 E. 29Th St.	Buena Vista	Va	24416			Yes	Existing - Other

Facility Type	Address Line 1	City	State	Zip	Longitude	Latitude	Interconnection Available at this Location	Status in Proposed Network
Last Mile Network Access Point	1240 Magnolia Ave.	Buena Vista	Va	24416			Yes	Existing - Other
Last Mile Network Access Point	131 21St. St.	Buena Vista	Va	24416			Yes	Existing - Other
Last Mile Network Access Point	149 W. 22nd St.	Buena Vista	Va	24416			Yes	Existing - Other
Last Mile Network Access Point	120 E. 22nd St.	Buena Vista	Va	24416			Yes	Existing - Other
Last Mile Network Access Point	140 W. 20th St.	Buena Vista	Va	24416			Yes	Existing - Other
Last Mile Network Access Point	2474 Magnolia Ave.	Buena Vista	Va	24416			Yes	Existing - Other
Last Mile Network Access Point	2275 Beech Ave.	Buena Vista	Va	24416			Yes	Existing - Other
Last Mile Network Access Point	1933 Sycamore Ave.	Buena Vista	Va	24416			Yes	Existing - Other
Last Mile Network Access Point	210 W. 22nd St.	Buena Vista	Va	24416			Yes	Existing - Other
Last Mile Network Access Point	2119 Sycamore Ave.	Buena Vista	Va	24416			Yes	Existing - Other
Last Mile Network Access Point	220 W. 22nd St.	Buena Vista	Va	24416			Yes	Existing - Other
Tower (cell site)	3405 Woodbine Ave.	Buena Vista	Va	24416			Yes	Existing - Other
Tower (cell site)	231 Landfill Rd.	Buena Vista	Va	24416			Yes	Existing - Other
Tower (cell site)	1360 E. Midland Trl.	Lexington	Va	24450			Yes	Existing - Other
Tower (cell site)	195 Parkway View Ln.	Lexington	Va	24450			Yes	Existing - Other
Last Mile Network Access Point	360 Collierstown Rd.	Lexington	Va	24450			Yes	Existing - Other
Last Mile Network Access Point	209 Saw Mill Ln.	Lexington	Va	24450			Yes	Existing - Other
Last Mile Network Access Point	28 Bones Pl.	Lexington	Va	24450			Yes	Existing - Other
Last Mile Network Access Point	176B W. Midland Trl.	Lexington	Va	24450			Yes	Existing - Other
Last Mile Network Access Point	176A W. Midland Trl.	Lexington	Va	24450			Yes	Existing - Other
Last Mile Network Access Point	130 Osage Ln.	Lexington	Va	24450			Yes	Existing - Other
Last Mile Network Access Point	118 Long Johns Ln.	Lexington	Va	24450			Yes	Existing - Other
Last Mile Network Access Point	122 Long Johns Ln.	Lexington	Va	24450			Yes	Existing - Other
Last Mile Network Access Point	84 E. Midland Trl.	Lexington	Va	24450			Yes	Existing - Other
Last Mile Network Access Point	98 E. Midland Trl.	Lexington	Va	24450			Yes	Existing - Other
Last Mile Network Access Point	65 E. Midland Trl.	Lexington	Va	24450			Yes	Existing - Other
Last Mile Network Access Point	85 E. Midland Trl.	Lexington	Va	24450			Yes	Existing - Other

Facility Type	Address Line 1	City	State	Zip	Longitude	Latitude	Interconnection Available at this Location	Status in Proposed Network
Last Mile Network Access Point	145 E. Midland Trl.	Lexington	Va	24450			Yes	Existing - Other
Last Mile Network Access Point	149 E. Midland Trl.	Lexington	Va	24450			Yes	Existing - Other
Last Mile Network Access Point	122 E. Midland Tr.	Lexington	Va	24450			Yes	Existing - Other
Last Mile Network Access Point	10 Bordens School Rd.	Lexington	Va	24450			Yes	Existing - Other
Last Mile Network Access Point	8 Woodcote Ln.	Lexington	Va	24450			Yes	Existing - Other
Last Mile Network Access Point	390 E. Midland Trl.	Lexington	Va	24450			Yes	Existing - Other
Last Mile Network Access Point	396 E. Midland Trl.	Lexington	Va	24450			Yes	Existing - Other
Last Mile Network Access Point	398 E. Midland Trl.	Lexington	Va	24450			Yes	Existing - Other
Last Mile Network Access Point	404 E. Midland Trl.	Lexington	Va	24450			Yes	Existing - Other
Last Mile Network Access Point	9 Memorial Ln.	Lexington	Va	24450			Yes	Existing - Other
Last Mile Network Access Point	848 E. Midland Trl.	Lexington	Va	24450			Yes	Existing - Other
Last Mile Network Access Point	101 Memorial Ln.	Lexington	Va	24450			Yes	Existing - Other
Last Mile Network Access Point	1870 E. Midland Trl.	Lexington	Va	24450			Yes	Existing - Other
Last Mile Network Access Point	2177 E. Midland Trl.	Buena Vista	Va	24416			Yes	Existing - Other
Last Mile Network Access Point	95 Bennetts Run Rd.	Buena Vista	Va	24416			Yes	Existing - Other
Last Mile Network Access Point	818 Rockbridge Rd.	Glasgow	Va	24555			Yes	Existing - Other
Last Mile Network Access Point	836 Rockbridge Rd.	Glasgow	Va	24555			Yes	Existing - Other
Last Mile Network Access Point	831 Rockbridge Rd.	Glasgow	Va	24555			Yes	Existing - Other
Last Mile Network Access Point	844 Rockbridge Rd.	Glasgow	Va	24555			Yes	Existing - Other
Last Mile Network Access Point	805 Blue Ridge Rd.	Glasgow	Va	24555			Yes	Existing - Other
Last Mile Network Access Point	819 Blue Ridge Rd.	Glasgow	Va	24555			Yes	Existing - Other
Last Mile Network Access Point	800 Blue Ridge Rd.	Glasgow	Va	24555			Yes	Existing - Other
Tower (cell site)	516 9th St.	Glasgow	Va	24555			Yes	Existing - Other
Last Mile Network Access Point	404 Anderson St.	Glasgow	Va	24555			Yes	Existing - Other
Last Mile Network Access Point	175 RJ Corman Dr.	Glasgow	Va	24555			Yes	Existing - Other



Facility Type	Address Line 1	City	State	Zip	Longitude	Latitude	Interconnection Available at this Location	Status in Proposed Network
Last Mile Network Access Point	924 Rockbridge Rd.	Glasgow	Va	24555			Yes	Existing - Other
Last Mile Network Access Point	1123 Rockbridge Rd.	Glasgow	Va	24555			Yes	Existing - Other
Last Mile Network Access Point	1134 Rockbridge Rd.	Glasgow	Va	24555			Yes	Existing - Other
Last Mile Network Access Point	1926 Wert Faulkner Hwy	Glasgow	Va	24555			Yes	Existing - Other
Last Mile Network Access Point	43 Douglas Way	Natural Bridge Station	Va	24579			Yes	Existing - Other
Last Mile Network Access Point	110 Douglas Way	Natural Bridge Station	Va	24579			Yes	Existing - Other
Last Mile Network Access Point	2 Nikki Ln.	Natural Bridge Station	Va	24579			Yes	Existing - Other
Last Mile Network Access Point	80 American Way	Natural Bridge Station	Va	24579			Yes	Existing - Other
Last Mile Network Access Point	37 Arnolds Valley Rd.	Natural Bridge Station	Va	24579			Yes	Existing - Other
Last Mile Network Access Point	44 Arnolds Valley Rd.	Natural Bridge Station	Va	24579			Yes	Existing - Other
Last Mile Network Access Point	1575 Wert Faulkner Hwy	Natural Bridge Station	Va	24579			Yes	Existing - Other
Last Mile Network Access Point	1482 Wert Faulkner Hwy	Natural Bridge Station	Va	24579			Yes	Existing - Other
Last Mile Network Access Point	9 Lloyd Tolley Rd.	Natural Bridge Station	Va	24579			Yes	Existing - Other
Last Mile Network Access Point	153 Sherwood Ln.	Natural Bridge Station	Va	24579			Yes	Existing - Other
Last Mile Network Access Point	27 Ranger Ln.	Natural Bridge Station	Va	24579			Yes	Existing - Other
Last Mile Network Access Point	65 Ranger Ln.	Natural Bridge Station	Va	24579			Yes	Existing - Other
Last Mile Network Access Point	593 Wert Faulkner Hwy	Natural Bridge Station	Va	24579			Yes	Existing - Other
Last Mile Network Access Point	70 Wert Faulkner Hwy	Natural Bridge	Va	24578			Yes	Existing - Other
Last Mile Network Access Point	15 Appledore Ln.	Natural Bridge	Va	24578			Yes	Existing - Other
Last Mile Network Access Point	6313 S. Lee Hwy	Natural Bridge	Va	24578			Yes	Existing - Other
Tower (cell site)	130 Dozer Track Ln.	Natural Bridge	Va	24578			Yes	Existing - Other
Last Mile Network Access Point	5784 S. Lee Hwy	Natural Bridge	Va	24578			Yes	Existing - Other
Last Mile Network Access Point	95 Maury River Rd.	Lexington	Va	24450			Yes	Existing - Other
Last Mile Network Access Point	25 Willow Springs Rd.	Lexington	Va	24450			Yes	Existing - Other
Last Mile Network Access Point	133 Maury River Rd.	Lexington	Va	24450			Yes	Existing - Other

Facility Type	Address Line 1	City	State	Zip	Longitude	Latitude	Interconnection Available at this Location	Status in Proposed Network
Last Mile Network Access Point	152 Maury River Rd.	Lexington	Va	24450			Yes	Existing - Other
Last Mile Network Access Point	152A Maury River Rd.	Lexington	Va	24450			Yes	Existing - Other
Last Mile Network Access Point	27 Gallery Ln.	Lexington	Va	24450			Yes	Existing - Other
Last Mile Network Access Point	275 Alphin Ln.	Lexington	Va	24450			Yes	Existing - Other
Last Mile Network Access Point	484 Maury River Rd.	Lexington	Va	24450			Yes	Existing - Other
Last Mile Network Access Point	486 Maury River Rd.	Lexington	Va	24450			Yes	Existing - Other
Last Mile Network Access Point	487 Maury River Rd.	Lexington	Va	24450			Yes	Existing - Other
Last Mile Network Access Point	70 Lazy Acres Ln.	Lexington	Va	24450			Yes	Existing - Other
Last Mile Network Access Point	82 Campground Ln.	Lexington	Va	24450			Yes	Existing - Other
Last Mile Network Access Point	4781 Maury River Rd.	Rockbridge Baths	Va	24473			Yes	Existing - Other
Last Mile Network Access Point	12 McCurdy Ln.	Rockbridge Baths	Va	24473			Yes	Existing - Other
Last Mile Network Access Point	76 Beltway Dr.	Goshen	Va	24439			Yes	Existing - Other
Last Mile Network Access Point	125 Camp Virginia Dr.	Goshen	Va	24439			Yes	Existing - Other
Last Mile Network Access Point	250 North Fork Ln.	Goshen	Va	24439			Yes	Existing - Other
Last Mile Network Access Point	9223 Maury River Rd.	Goshen	Va	24439			Yes	Existing - Other
Last Mile Network Access Point	9625 Maury River Rd.	Goshen	Va	24439			Yes	Existing - Other
Last Mile Network Access Point	9693 Maury River Rd.	Goshen	Va	24439			Yes	Existing - Other
Last Mile Network Access Point	1152 Virginia Ave.	Goshen	Va	24439			Yes	Existing - Other
Last Mile Network Access Point	1120 Virginia Ave.	Goshen	Va	24439			Yes	Existing - Other
Last Mile Network Access Point	2 Old Buena Vista Rd.	Lexington	Va	24450			Yes	Existing - Other
Last Mile Network Access Point	622 N. Lee Hwy	Lexington	Va	24450			Yes	Existing - Other
Last Mile Network Access Point	603 N. Lee Hwy	Lexington	Va	24450			Yes	Existing - Other
Last Mile Network Access Point	20 Magnolia Sq.	Lexington	Va	24450			Yes	Existing - Other
Last Mile Network Access Point	40 Magnolia Sq.	Lexington	Va	24450			Yes	Existing - Other
Last Mile Network Access Point	705 N. Lee Hwy	Lexington	Va	24450			Yes	Existing - Other

Facility Type	Address Line 1	City	State	Zip	Longitude	Latitude	Interconnection Available at this Location	Status in Proposed Network
Last Mile Network Access Point	25 Crossing Ln.	Lexington	Va	24450			Yes	Existing - Other
Last Mile Network Access Point	30 Crossing Ln.	Lexington	Va	24450			Yes	Existing - Other
Last Mile Network Access Point	740 N. Lee Hwy	Lexington	Va	24450			Yes	Existing - Other
Last Mile Network Access Point	754 N. Lee Hwy	Lexington	Va	24450			Yes	Existing - Other
Last Mile Network Access Point	756 N. Lee Hwy	Lexington	Va	24450			Yes	Existing - Other
Last Mile Network Access Point	758 N. Lee Hwy	Lexington	Va	24450			Yes	Existing - Other
Last Mile Network Access Point	760 N. Lee Hwy	Lexington	Va	24450			Yes	Existing - Other
Last Mile Network Access Point	770 N. Lee Hwy	Lexington	Va	24450			Yes	Existing - Other
Last Mile Network Access Point	780 N. Lee Hwy	Lexington	Va	24450			Yes	Existing - Other
Last Mile Network Access Point	788 N. Lee Hwy	Lexington	Va	24450			Yes	Existing - Other
Last Mile Network Access Point	800 N. Lee Hwy	Lexington	Va	24450			Yes	Existing - Other
Last Mile Network Access Point	850 N. Lee Hwy	Lexington	Va	24450			Yes	Existing - Other
Last Mile Network Access Point	880 N. Lee Hwy	Lexington	Va	24450			Yes	Existing - Other
Last Mile Network Access Point	869 N. Lee Hwy	Lexington	Va	24450			Yes	Existing - Other
Last Mile Network Access Point	875 N. Lee Hwy	Lexington	Va	24450			Yes	Existing - Other
Last Mile Network Access Point	889 N. Lee Hwy	Lexington	Va	24450			Yes	Existing - Other
Last Mile Network Access Point	95 Hines Ln.	Lexington	Va	24450			Yes	Existing - Other
Last Mile Network Access Point	110 Hines Ln.	Lexington	Va	24450			Yes	Existing - Other
Last Mile Network Access Point	215 Greenhouse Rd.	Lexington	Va	24450			Yes	Existing - Other
Last Mile Network Access Point	289 Greenhouse Rd.	Lexington	Va	24450			Yes	Existing - Other
Tower (cell site)	280 Greenhouse Rd.	Lexington	Va	24450			Yes	Existing - Other
Last Mile Network Access Point	296 Greenhouse Rd.	Lexington	Va	24450			Yes	Existing - Other
Last Mile Network Access Point	55A Comfort Way	Lexington	Va	24450			Yes	Existing - Other
Last Mile Network Access Point	55B Comfort Way	Lexington	Va	24450			Yes	Existing - Other
Last Mile Network Access Point	55C Comfort Way	Lexington	Va	24450			Yes	Existing - Other

Facility Type	Address Line 1	City	State	Zip	Longitude	Latitude	Interconnection Available at this Location	Status in Proposed Network
Last Mile Network Access Point	62 Comfort Way	Lexington	Va	24450			Yes	Existing - Other
Last Mile Network Access Point	65 Econo Ln.	Lexington	Va	24450			Yes	Existing - Other
Last Mile Network Access Point	1100 N. Lee Hwy	Lexington	Va	24450			Yes	Existing - Other
Last Mile Network Access Point	1136 N. Lee Hwy	Lexington	Va	24450			Yes	Existing - Other
Last Mile Network Access Point	1150 N. Lee Hwy	Lexington	Va	24450			Yes	Existing - Other
Last Mile Network Access Point	1139 N. Lee Hwy	Lexington	Va	24450			Yes	Existing - Other
Last Mile Network Access Point	1157 N. Lee Hwy	Lexington	Va	24450			Yes	Existing - Other
Last Mile Network Access Point	1197 N. Lee Hwy	Lexington	Va	24450			Yes	Existing - Other
Last Mile Network Access Point	1209 N. Lee Hwy	Lexington	Va	24450			Yes	Existing - Other
Last Mile Network Access Point	1211 N. Lee Hwy	Lexington	Va	24450			Yes	Existing - Other
Last Mile Network Access Point	1217 N. Lee Hwy	Lexington	Va	24450			Yes	Existing - Other
Last Mile Network Access Point	1227 N. Lee Hwy	Lexington	Va	24450			Yes	Existing - Other
Last Mile Network Access Point	1229 N. Lee Hwy	Lexington	Va	24450			Yes	Existing - Other
Last Mile Network Access Point	1233 N. Lee Hwy	Lexington	Va	24450			Yes	Existing - Other
Last Mile Network Access Point	1263 N. Lee Hwy	Lexington	Va	24450			Yes	Existing - Other
Last Mile Network Access Point	1255 N. Lee Hwy	Lexington	Va	24450			Yes	Existing - Other
Last Mile Network Access Point	1398 N. Lee Hwy	Lexington	Va	24450			Yes	Existing - Other
Last Mile Network Access Point	30 Pinnacle Ln.	Lexington	Va	24450			Yes	Existing - Other
Last Mile Network Access Point	1541 N. Lee Hwy	Lexington	Va	24450			Yes	Existing - Other
Last Mile Network Access Point	2050 N. Lee Hwy	Lexington	Va	24450			Yes	Existing - Other
Last Mile Network Access Point	2311 N. Lee Hwy	Lexington	Va	24450			Yes	Existing - Other
Last Mile Network Access Point	2345 N. Lee Hwy	Lexington	Va	24450			Yes	Existing - Other
Last Mile Network Access Point	2367 N. Lee Hwy	Lexington	Va	24450			Yes	Existing - Other
Last Mile Network Access Point	2409 N. Lee Hwy	Lexington	Va	24450			Yes	Existing - Other
Last Mile Network Access Point	2460 N. Lee Hwy	Lexington	Va	24450			Yes	Existing - Other

Facility Type	Address Line 1	City	State	Zip	Longitude	Latitude	Interconnection Available at this Location	Status in Proposed Network
Last Mile Network Access Point	11 Yellow Rail Ln.	Lexington	Va	24450			Yes	Existing - Other
Last Mile Network Access Point	33 Yellow Rail Ln.	Lexington	Va	24450			Yes	Existing - Other
Last Mile Network Access Point	40 Yellow Rail Ln.	Lexington	Va	24450			Yes	Existing - Other
Last Mile Network Access Point	20 Yellow Rail Ln.	Lexington	Va	24450			Yes	Existing - Other
Last Mile Network Access Point	2468 N. Lee Hwy	Lexington	Va	24450			Yes	Existing - Other
Last Mile Network Access Point	2516 N. Lee Hwy	Lexington	Va	24450			Yes	Existing - Other
Last Mile Network Access Point	1621 Valley Pike	Lexington	Va	24450			Yes	Existing - Other
Last Mile Network Access Point	1619 Valley Pike	Lexington	Va	24450			Yes	Existing - Other
Last Mile Network Access Point	2659 N. Lee Hwy	Lexington	Va	24450			Yes	Existing - Other
Tower (cell site)	195 Boundary Line Ln.	Lexington	Va	24450			Yes	Existing - Other
Last Mile Network Access Point	2809 N. Lee Hwy	Lexington	Va	24450			Yes	Existing - Other
Last Mile Network Access Point	2814 N. Lee Hwy	Lexington	Va	24450			Yes	Existing - Other
Last Mile Network Access Point	2846 N. Lee Hwy	Lexington	Va	24450			Yes	Existing - Other
Last Mile Network Access Point	2836 N. Lee Hwy	Lexington	Va	24450			Yes	Existing - Other
Last Mile Network Access Point	3111 N. Lee Hwy	Lexington	Va	24450			Yes	Existing - Other
Tower (cell site)	75 Old Chapel Rd.	Lexington	Va	24450			Yes	Existing - Other
Last Mile Network Access Point	5459 N. Lee Hwy	Fairfield	Va	24435			Yes	Existing - Other
Last Mile Network Access Point	5559 N. Lee Hwy	Fairfield	Va	24435			Yes	Existing - Other
Last Mile Network Access Point	5586 N. Lee Hwy	Fairfield	Va	24435			Yes	Existing - Other
Last Mile Network Access Point	5589 N. Lee Hwy	Fairfield	Va	24435			Yes	Existing - Other
Last Mile Network Access Point	5613 N. Lee Hwy	Fairfield	Va	24435			Yes	Existing - Other
Last Mile Network Access Point	86 Plumb Ln.	Fairfield	Va	24435			Yes	Existing - Other
Last Mile Network Access Point	44 Sterrett Rd.	Fairfield	Va	24435			Yes	Existing - Other
Last Mile Network Access Point	5765 N. Lee Hwy	Fairfield	Va	24435			Yes	Existing - Other
Last Mile Network Access Point	5788 N. Lee Hwy	Fairfield	Va	24435			Yes	Existing - Other
Last Mile Network Access Point	5874 N. Lee Hwy	Fairfield	Va	24435			Yes	Existing - Other



## **BTOP Comprehensive Community Infrastructure Detailed Budget**

Please complete the General Budget Overview and Detailed Project Costs worksheets.

**Please refer to the Comprehensive Community Infrastructure Grant Guidance for detailed instructions on the completing this attachment.**

Applicants are required to provide this attachment as an Excel file, and not to convert it to PDF when submitting a copy of their application on an appropriate electronic medium, such as a DVD, CD-ROM, or flash drive. Applicants should not alter the layout of the provided templates, except to insert additional line-items as needed in the Detailed Project Costs worksheet.

## General Budget Overview

Budget	Federal Funding Request	Matching Funds (Cash)	Matching Funds (In-Kind)	Budget TOTAL	Last Mile Allocation	Middle Mile Allocation	Allocated TOTAL
Network & Access Equipment (switching, routing, transport, access)	\$250,320	\$107,280		\$357,600		\$357,600.00	\$357,600
Outside Plant (cables, conduits, ducts, poles, towers, repeaters, etc.)	\$1,249,437	\$535,473		\$1,784,910		#####	\$1,784,910
Buildings and Land – (new construction, improvements, renovations, lease)	\$2,233,000	\$957,000		\$3,190,000		#####	\$3,190,000
Customer Premise Equipment (modems, set-top boxes, inside wiring, etc.)	\$53,900	\$23,100		\$77,000		\$77,000.00	\$77,000
Billing and Operational Support Systems (IT systems, software, etc.)	\$165,225	\$70,811		\$236,035		\$236,035.00	\$236,035
Operating Equipment (vehicles, office equipment, other)				\$0			\$0
Engineering/Professional Services (engineering design, project management, consulting, etc.)	\$797,979	\$341,991		\$1,139,970		\$1,139,970	\$1,139,970
Testing (network elements, IT system elements, user devices, test generators, lab furnishings, servers/computers, etc.)	\$64,445	\$27,619		\$92,064		\$92,064.00	\$92,064
Site Preparation	\$1,805,619	\$773,837		\$2,579,456		\$2,579,456	\$2,579,456
Other	\$378,945	\$162,405		\$541,350		\$541,350.00	\$541,350
<b>TOTAL BROADBAND SYSTEM:</b>	<b>\$6,998,870</b>	<b>\$2,999,516</b>	<b>\$0</b>	<b>\$9,998,385</b>	<b>\$0</b>	<b>\$9,998,385</b>	<b>\$9,998,385</b>
<b>Cost Share Percentage:</b>	<b>70.00%</b>	<b>30.00%</b>	<b>0.00%</b>				



## DETAIL OF PROJECT COSTS

PLEASE COMPLETE THE TABLE BELOW FOR THE DIFFERENT CATEGORIES OF EQUIPMENT THAT WILL BE REQUIRED FOR COMPLETING THE PROJECT. EACH CATEGORY SHOULD BE BROKEN DOWN TO THE APPROPRIATE LEVEL FOR IDENTIFYING UNIT COST

SERVICE AREA or COMMON NETWORK FACILITIES:		Match (Cash/In-kind)	Unit Cost	No. of Units	Total Cost	Last Mile Allocation	Middle Mile Allocation	Allocated Total	SF-424C Budget Category	Support of Reasonableness
<b>NETWORK &amp; ACCESS EQUIPMENT</b>					<b>\$357,600</b>	<b>\$0</b>	<b>\$357,600</b>	<b>\$357,600</b>		
<b>Switching</b>	Cisco 3560G	Cash Match	\$5,300.00	7	\$37,100		\$37,100.00	\$37,100	10. Equipment	Recent Quote
					\$0			\$0		
					\$0			\$0		
<b>Routing</b>	Cisco 3750G	Cash Match	\$7,500.00	2	\$15,000		\$15,000.00	\$15,000	10. Equipment	Recent Quote
					\$0			\$0		
					\$0			\$0		
<b>Transport</b>	Cisco Optics (SFP, XFP, XENPA)	Cash Match	\$875.00	18	\$15,750		\$15,750.00	\$15,750	10. Equipment	Recent Quote
	PacketFront Optics	Cash Match	\$375.00	30	\$11,250		\$11,250.00	\$11,250	10. Equipment	Recent Quote
	Metro Ethernet Card for Raptor	Cash Match	\$250.00	8	\$2,000		\$2,000.00	\$2,000	10. Equipment	Recent Quote
	Ethernet Extender (IMUX)	Cash Match	\$1,200.00	21	\$25,200		\$25,200.00	\$25,200	10. Equipment	Recent Quote
<b>Access</b>	Raptor 48 port DSLAM	Cash Match	\$2,500.00	32	\$80,000		\$80,000.00	\$80,000	10. Equipment	Recent Quote
	PacketFront Fiber ASR	Cash Match	\$5,400.00	15	\$81,000		\$81,000.00	\$81,000	10. Equipment	Recent Quote
					\$0			\$0		
<b>Other</b>	Equipment Racks	Cash Match	\$450.00	4	\$1,800		\$1,800.00	\$1,800	10. Equipment	Recent Quote
	Patch Panels	Cash Match	\$4,600.00	7	\$32,200		\$32,200.00	\$32,200	10. Equipment	Recent Quote
	UPS	Cash Match	\$3,000.00	7	\$21,000		\$21,000.00	\$21,000	10. Equipment	Recent Quote
	DSL Cabinet Battery + Heating P	Cash Match	\$1,000.00	29	\$29,000		\$29,000.00	\$29,000	10. Equipment	Recent Quote
	Fiber Jumpers	Cash Match	\$14.00	450	\$6,300		\$6,300.00	\$6,300	10. Equipment	Recent Quote
<b>OUTSIDE PLANT</b>					<b>\$1,784,910</b>	<b>\$0</b>	<b>\$1,784,910</b>	<b>\$1,784,910</b>		
<b>Cables</b>	288 Count Single Mode Fiber Opt	Cash Match	1.2	518323	\$621,988		\$621,988.00	\$621,988	10. Equipment	Recent Vendor Quote
	Drop Fiber	Cash Match	0.09	236250	\$21,263		\$21,263.00	\$21,263	10. Equipment	Estimate based upon similar project
					\$0			\$0		
<b>Conduits</b>	2x 1.25" HDPE Conduit	Cash Match	0.6	942406	\$565,444		\$565,444.00	\$565,444	10. Equipment	Recent purchase @ actual price
					\$0			\$0		
					\$0			\$0		
<b>Ducts</b>	Drop Duct	Cash Match	0.3	236250	\$70,875		\$70,875.00	\$70,875	10. Equipment	Estimate based upon similar project
					\$0			\$0		
					\$0			\$0		
<b>Poles</b>					\$0			\$0		
					\$0			\$0		
					\$0			\$0		
<b>Towers</b>					\$0			\$0		
					\$0			\$0		
					\$0			\$0		
<b>Repeaters</b>					\$0			\$0		
					\$0			\$0		
					\$0			\$0		
<b>Other</b>	Buried Fiber Marker Posts	Cash Match	15	2356	\$35,340		\$35,340.00	\$35,340	10. Equipment	Recent vendor quote (list price)
	Handholes/Pullboxes (24x36x36)	Cash Match	350	589	\$206,150		\$206,150.00	\$206,150	10. Equipment	Recent vendor quote
	Splice Enclosures (Corning)	Cash Match	305	200	\$61,000		\$61,000.00	\$61,000	10. Equipment	Recent vendor quote
	Active Cabinet	Cash Match	3500	36	\$126,000		\$126,000.00	\$126,000	10. Equipment	Estimate based upon similar project
	Generator (w/LP tank)	Cash Match	5500	5	\$27,500		\$27,500.00	\$27,500	10. Equipment	Estimate based upon similar project
	Automated Transfer Switch	Cash Match	500	5	\$2,500		\$2,500.00	\$2,500	10. Equipment	Estimate based upon similar project
	Portable Generators	Cash Match	2500	5	\$12,500		\$12,500.00	\$12,500	10. Equipment	Estimate based upon similar project
	Manual Transfer Switches	Cash Match	200	15	\$3,000		\$3,000.00	\$3,000	10. Equipment	Estimate based upon similar project

	Misc Building Materials (DSL)	Cash Match	600	29	\$17,400		\$17,400	\$17,400	10. Equipment	Estimate based upon similar project
	Cross Connect Cabling	Cash Match	300	32	\$9,600		\$9,600	\$9,600	10. Equipment	Last mile provider provided estimate
	Copper Patch Panel	Cash Match	150	29	\$4,350		\$4,350	\$4,350	10. Equipment	Last mile provider provided estimate

SERVICE AREA OR COMMON		Match (Cash/In-kind)	Unit Cost	No. of Units	Total Cost	Last Mile Allocation	Middle Mile Allocation	Allocated Total	SF-424C Budget Category	Support of Reasonableness
<b>BUILDINGS</b>					<b>\$3,190,000</b>	<b>\$0</b>	<b>\$3,190,000</b>	<b>\$3,190,000</b>		
<b>New Construction</b>	Regional Data Center	Cash Match	3190000	1	\$3,190,000		3190000	\$3,190,000	2. Land, structures	Estimated based upon consulting with data
					\$0			\$0		
					\$0			\$0		
<b>Pre-Fab Huts</b>					\$0			\$0		
					\$0			\$0		
					\$0			\$0		
<b>Improvements &amp;</b>					\$0		\$0.00	\$0		
					\$0		\$0.00	\$0		
					\$0		\$0.00	\$0		
					\$0		\$0.00	\$0		
					\$0		\$0.00	\$0		
					\$0		\$0.00	\$0		
					\$0		\$0.00	\$0		
					\$0		\$0.00	\$0		
					\$0		\$0.00	\$0		
					\$0		\$0.00	\$0		
<b>Other</b>					\$0			\$0		
					\$0			\$0		
					\$0			\$0		
<b>CUSTOMER PREMISE EQUIPMENT</b>					<b>\$77,000</b>	<b>\$0</b>	<b>\$77,000</b>	<b>\$77,000</b>		
<b>Modems</b>	Fiber CPE (PacketFront DRG)	Cash Match	325	175	\$56,875		\$56,875	\$56,875	10. Equipment	Recent vendor quote
					\$0			\$0		
					\$0			\$0		
<b>Set Top Boxes</b>					\$0			\$0		
					\$0			\$0		
					\$0			\$0		
<b>Inside Writing</b>					\$0			\$0		
					\$0			\$0		
					\$0			\$0		
<b>Other</b>	NEMA Boxes	Cash Match	40	175	\$7,000		\$7,000	\$7,000	10. Equipment	Estimate based upon similar project
	Misc Drop Hardware	Cash Match	20	175	\$3,500		\$3,500	\$3,500	10. Equipment	Estimate based upon similar project
	Drop Splice Tray w/Pigtails	Cash Match	55	175	\$9,625		\$9,625	\$9,625	10. Equipment	Estimate based upon similar project
<b>BILLING SUPPORT AND OPERATIONS SUPPORT SYSTEMS</b>					<b>\$236,035</b>	<b>\$0</b>	<b>\$236,035</b>	<b>\$236,035</b>		
<b>Billing Support</b>	NMS Server Package	Cash Match	12500	1	\$12,500		12500	\$12,500	10. Equipment	Estimate based upon similar project
	NMS Licensing	Cash Match	190000	1	\$190,000		\$190,000	\$190,000	11. Misc.	Estimate based upon similar project
	PacketFront Port Software Licens	Cash Match	52	360	\$18,720		\$18,720	\$18,720	11. Misc.	Vendor quote
<b>Customer Care</b>	Management and Care Servers	Cash Match	3500	2	\$7,000		7000	\$7,000	10. Equipment	Estimate based upon similar project
					\$0			\$0		
					\$0			\$0		
<b>Other Support</b>	Network Equipment Maintenance	Cash Match	7815	1	\$7,815		\$7,815	\$7,815	11. Misc.	Estimate based upon similar project
					\$0			\$0		

COMMON	Match	Unit Cost	No. of	Total Cost	Last Mile	Middle Mile	Allocated Total	SF-424C Budget	Support of Reasonableness
<b>OPERATING EQUIPMENT</b>				\$0	\$0	\$0	\$0		
<b>Vehicles</b>				\$0			\$0		
				\$0			\$0		
				\$0			\$0		
<b>Office Equipment /</b>				\$0			\$0		
				\$0			\$0		
				\$0			\$0		
<b>Other</b>				\$0			\$0		
				\$0			\$0		
				\$0			\$0		
<b>PROFESSIONAL SERVICES</b>				\$1,139,970	\$0	\$1,139,970	\$1,139,970		
<b>Engineering</b>	Engineering Fiber Design	Cash Match	433263	1	\$433,263	\$433,263.00	\$433,263	4. Architectural and engr.	Estimate based upon project length and prev
	Permitting	Cash Match	15000	1	\$15,000	\$15,000.00	\$15,000	4. Architectural and engr.	Estimate based upon previous projects
	Engineering Inspection	Cash Match	108316	1	\$108,316	\$108,316.00	\$108,316	6. Inspection fees	Estimate based upon project length and prev
					\$0	\$0	\$0		
<b>Project</b>	Design, PM, QA	Cash Match	433263	1	\$433,263	\$433,263.00	\$433,263	4. Architectural and engr.	Estimate based upon previous projects
	Cabinet Building Permit	Cash Match	130	29	\$3,770	\$3,770.00	\$3,770	4. Architectural and engr.	Last mile provider provided estimate
					\$0	\$0	\$0		
<b>Consulting</b>	Technical Consulting	Cash Match	54158	1	\$54,158	\$54,158.00	\$54,158	4. Architectural and engr.	Estimate based upon previous projects
					\$0	\$0	\$0		
					\$0	\$0	\$0		
<b>Other</b>	Application Preparation	Cash Match	15000	1	\$15,000	\$15,000.00	\$15,000	11. Misc.	Estimate based upon time to date completin
	Legal	Cash Match	25000	1	\$25,000	\$25,000.00	\$25,000	1. Admin and Legal	Estimate based upon other experience (conc
	DSL Cabinet Lease Preparation	Cash Match	350	29	\$10,150	\$10,150	\$10,150	1. Admin and Legal	Last mile provider provided estimate
	DSL Configuration	Cash Match	800	29	\$23,200	\$23,200	\$23,200	4. Architectural and engr.	Last mile provider provided estimate
	Electrician	Cash Match	650	29	\$18,850	\$18,850	\$18,850	9. Construction	Estimate based upon previous projects
<b>TESTING</b>					\$92,064	\$0	\$92,064		
<b>Network</b>	Network Testing	Cash Match	81237	1	\$81,237	\$81,237	\$81,237	4. Architectural and engr.	Estimate based upon previous projects
					\$0	\$0	\$0		
					\$0	\$0	\$0		
<b>IT System</b>	System Testing	Cash Match	10827	1	\$10,827	10827	\$10,827	4. Architectural and engr.	Estimate based upon previous projects
					\$0	\$0	\$0		
					\$0	\$0	\$0		
<b>User Devices</b>					\$0	\$0	\$0		
					\$0	\$0	\$0		
					\$0	\$0	\$0		
<b>Test Generators</b>					\$0	\$0	\$0		
					\$0	\$0	\$0		
					\$0	\$0	\$0		
<b>Lab</b>					\$0	\$0	\$0		
					\$0	\$0	\$0		
					\$0	\$0	\$0		
<b>Servers/Computer</b>					\$0	\$0	\$0		
					\$0	\$0	\$0		

					\$0			\$0		
COMMON		Match	Unit Cost	No. of	Total Cost	Last Mile	Middle Mile	Allocated Total	SF-424C Budget	Support of Reasonableness
<b>OTHER UPFRONT COSTS</b>					<b>\$3,120,806</b>	<b>\$0</b>	<b>\$3,120,806</b>	<b>\$3,120,806</b>		
<b>Site</b>	Trenching	Cash Match	7.25	47120	\$341,620		\$341,620.00	\$341,620	9. Construction	Engineering partner provided estimate
	Boring (Road Crossings)	Cash Match	9.75	70680	\$689,130		\$689,130.00	\$689,130	9. Construction	Engineering partner provided estimate
	Handhole Placement	Cash Match	500	589	\$294,500		\$294,500.00	\$294,500	9. Construction	Recent project cost
	Fixed Generator Site Prep	Cash Match	1500	5	\$7,500		\$7,500.00	\$7,500	9. Construction	Recent project cost
	DSL Cabinet Site Prep	Cash Match	800	29	\$23,200		\$23,200.00	\$23,200	9. Construction	Last mile provider provided estimate
	Cabinet Site Prep	Cash Match	1900	7	\$13,300		\$13,300.00	\$13,300	9. Construction	Recent project cost
	Bridge Attachments	Cash Match	30000	5	\$150,000		\$150,000.00	\$150,000	9. Construction	Engineering partner provided estimate
	Direct Bury	Cash Match	3	348690	\$1,046,070		\$1,046,070.00	\$1,046,070	9. Construction	Engineering partner provided estimate
	Aerial Construction	Cash Match	3	4712	\$14,136		\$14,136.00	\$14,136	9. Construction	Engineering partner provided estimate
<b>Other</b>	nTelos Cross Connect Fee (DSL)	Cash Match	4300	32	\$137,600		\$137,600.00	\$137,600	11. Misc.	Recent quote for bulk splicing
	Land Use for Cabinets	Cash Match	1000	29	\$29,000		\$29,000.00	\$29,000	2. Land, structures	Last mile provider provided estimate
	Splicing	Cash Match	25	7500	\$187,500		\$187,500.00	\$187,500	9. Construction	Recent project experience
	Drop Labor	Cash Match	1000	175	\$175,000		\$175,000.00	\$175,000	9. Construction	Recent project experience
	Drop Splicing	Cash Match	35	350	\$12,250		\$12,250.00	\$12,250	9. Construction	Recent project experience
<b>PROJECT TOTAL:</b>					<b>\$9,998,385</b>	<b>\$0</b>	<b>\$9,998,385</b>	<b>\$9,998,385</b>		

**BUDGET INFORMATION - Construction Programs**

OMB Approval No. 4040-0008  
Expiration Date 07/30/2010

*NOTE: Certain Federal assistance programs require additional computations to arrive at the Federal share of project costs eligible for participation. If such is the case, you will be notified.*

COST CLASSIFICATION	a. Total Cost	b. Costs Not Allowable for Participation	c. Total Allowable Costs (Columns a-b)
1. Administrative and legal expenses	\$ 35,150.00	\$ 0.00	\$ 35,150.00
2. Land, structures, rights-of-way, appraisals, etc.	\$ 3,219,000.00	\$ 0.00	\$ 3,219,000.00
3. Relocation expenses and payments	\$ 0.00	\$ 0.00	\$ 0.00
4. Architectural and engineering fees	\$ 1,054,718.00	\$ 0.00	\$ 1,054,718.00
5. Other architectural and engineering fees	\$ 0.00	\$ 0.00	\$ 0.00
6. Project inspection fees	\$ 108,316.00	\$ 0.00	\$ 108,316.00
7. Site work	\$ 0.00	\$ 0.00	\$ 0.00
8. Demolition and removal	\$ 0.00	\$ 0.00	\$ 0.00
9. Construction	\$ 2,973,056.00	\$ 0.00	\$ 2,973,056.00
10. Equipment	\$ 2,239,010.00	\$ 0.00	\$ 2,239,010.00
11. Miscellaneous	\$ 369,135.00	\$ 0.00	\$ 369,135.00
12. SUBTOTAL (sum of lines 1- 11)	\$ 9,998,385.00	\$ 0.00	\$ 9,998,385.00
13. Contingencies	\$ 0.00	\$ 0.00	\$ 0.00
14. SUBTOTAL	\$ 9,998,385.00	\$ 0.00	\$ 9,998,385.00
15. Project (program) income	\$ 0.00	\$ 0.00	\$ 0.00
16. TOTAL PROJECT COSTS (subtract #15 from #14)	\$ 9,998,385.00	\$ 0.00	\$ 9,998,385.00
<b>FEDERAL FUNDING</b>			
17. Federal assistance requested, calculate as follows: (Consult Federal agency for Federal percentage share.) Enter eligible costs from line 16c Multiply X <input type="text" value="70"/> % Enter the resulting Federal share.			\$ 6,998,870.00

## ASSURANCES - CONSTRUCTION PROGRAMS

OMB Approval No. 4040-0009

Expiration Date 07/30/2010

Public reporting burden for this collection of information is estimated to average 15 minutes per response, including time for reviewing instructions, searching existing data sources, gathering and maintaining the data needed, and completing and reviewing the collection of information. Send comments regarding the burden estimate or any other aspect of this collection of information, including suggestions for reducing this burden, to the Office of Management and Budget, Paperwork Reduction Project (0348-0042), Washington, DC 20503.

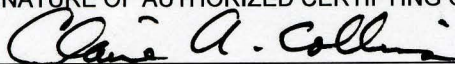
**PLEASE DO NOT RETURN YOUR COMPLETED FORM TO THE OFFICE OF MANAGEMENT AND BUDGET. SEND IT TO THE ADDRESS PROVIDED BY THE SPONSORING AGENCY.**

**NOTE:** Certain of these assurances may not be applicable to your project or program. If you have questions, please contact the Awarding Agency. Further, certain Federal assistance awarding agencies may require applicants to certify to additional assurances. If such is the case, you will be notified.

As the duly authorized representative of the applicant, I certify that the applicant:

1. Has the legal authority to apply for Federal assistance, and the institutional, managerial and financial capability (including funds sufficient to pay the non-Federal share of project costs) to ensure proper planning, management and completion of the project described in this application.
2. Will give the awarding agency, the Comptroller General of the United States and, if appropriate, the State, the right to examine all records, books, papers, or documents related to the assistance; and will establish a proper accounting system in accordance with generally accepted accounting standards or agency directives.
3. Will not dispose of, modify the use of, or change the terms of the real property title, or other interest in the site and facilities without permission and instructions from the awarding agency. Will record the Federal awarding agency directives and will include a covenant in the title of real property acquired in whole or in part with Federal assistance funds to assure non-discrimination during the useful life of the project.
4. Will comply with the requirements of the assistance awarding agency with regard to the drafting, review and approval of construction plans and specifications.
5. Will provide and maintain competent and adequate engineering supervision at the construction site to ensure that the complete work conforms with the approved plans and specifications and will furnish progress reports and such other information as may be required by the assistance awarding agency or State.
6. Will initiate and complete the work within the applicable time frame after receipt of approval of the awarding agency.
7. Will establish safeguards to prohibit employees from using their positions for a purpose that constitutes or presents the appearance of personal or organizational conflict of interest, or personal gain.
8. Will comply with the Intergovernmental Personnel Act of 1970 (42 U.S.C. §§4728-4763) relating to prescribed standards for merit systems for programs funded under one of the 19 statutes or regulations specified in Appendix A of OPM's Standards for a Merit System of Personnel Administration (5 C.F.R. 900, Subpart F).
9. Will comply with the Lead-Based Paint Poisoning Prevention Act (42 U.S.C. §§4801 et seq.) which prohibits the use of lead-based paint in construction or rehabilitation of residence structures.
10. Will comply with all Federal statutes relating to non-discrimination. These include but are not limited to: (a) Title VI of the Civil Rights Act of 1964 (P.L. 88-352) which prohibits discrimination on the basis of race, color or national origin; (b) Title IX of the Education Amendments of 1972, as amended (20 U.S.C. §§1681 1683, and 1685-1686), which prohibits discrimination on the basis of sex; (c) Section 504 of the Rehabilitation Act of 1973, as amended (29 U.S.C. §794), which prohibits discrimination on the basis of handicaps; (d) the Age Discrimination Act of 1975, as amended (42 U.S.C. §§6101-6107), which prohibits discrimination on the basis of age; (e) the Drug Abuse Office and Treatment Act of 1972 (P.L. 92-255), as amended, relating to nondiscrimination on the basis of drug abuse; (f) the Comprehensive Alcohol Abuse and Alcoholism Prevention, Treatment and Rehabilitation Act of 1970 (P.L. 91-616), as amended, relating to nondiscrimination on the basis of alcohol abuse or alcoholism; (g) §§523 and 527 of the Public Health Service Act of 1912 (42 U.S.C. §§290 dd-3 and 290 ee 3), as amended, relating to confidentiality of alcohol and drug abuse patient records; (h) Title VIII of the Civil Rights Act of 1968 (42 U.S.C. §§3601 et seq.), as amended, relating to nondiscrimination in the sale, rental or financing of housing; (i) any other nondiscrimination provisions in the specific statute(s) under which application for Federal assistance is being made; and, (j) the requirements of any other nondiscrimination statute(s) which may apply to the application.

11. Will comply, or has already complied, with the requirements of Titles II and III of the Uniform Relocation Assistance and Real Property Acquisition Policies Act of 1970 (P.L. 91-646) which provide for fair and equitable treatment of persons displaced or whose property is acquired as a result of Federal and federally-assisted programs. These requirements apply to all interests in real property acquired for project purposes regardless of Federal participation in purchases.
12. Will comply with the provisions of the Hatch Act (5 U.S.C. §§1501-1508 and 7324-7328) which limit the political activities of employees whose principal employment activities are funded in whole or in part with Federal funds.
13. Will comply, as applicable, with the provisions of the Davis-Bacon Act (40 U.S.C. §§276a to 276a-7), the Copeland Act (40 U.S.C. §276c and 18 U.S.C. §874), and the Contract Work Hours and Safety Standards Act (40 U.S.C. §§327-333) regarding labor standards for federally-assisted construction subagreements.
14. Will comply with flood insurance purchase requirements of Section 102(a) of the Flood Disaster Protection Act of 1973 (P.L. 93-234) which requires recipients in a special flood hazard area to participate in the program and to purchase flood insurance if the total cost of insurable construction and acquisition is \$10,000 or more.
15. Will comply with environmental standards which may be prescribed pursuant to the following: (a) institution of environmental quality control measures under the National Environmental Policy Act of 1969 (P.L. 91-190) and Executive Order (EO) 11514; (b) notification of violating facilities pursuant to EO 11738; (c) protection of wetlands pursuant to EO 11990; (d) evaluation of flood hazards in floodplains in accordance with EO 11988; (e) assurance of project consistency with the approved State management program developed under the Coastal Zone Management Act of 1972 (16 U.S.C. §§1451 et seq.); (f) conformity of Federal actions to State (Clean Air) implementation Plans under Section 176(c) of the Clean Air Act of 1955, as amended (42 U.S.C. §§7401 et seq.); (g) protection of underground sources of drinking water under the Safe Drinking Water Act of 1974, as amended (P.L. 93-523); and, (h) protection of endangered species under the Endangered Species Act of 1973, as amended (P.L. 93-205).
16. Will comply with the Wild and Scenic Rivers Act of 1968 (16 U.S.C. §§1271 et seq.) related to protecting components or potential components of the national wild and scenic rivers system.
17. Will assist the awarding agency in assuring compliance with Section 106 of the National Historic Preservation Act of 1966, as amended (16 U.S.C. §470), EO 11593 (identification and protection of historic properties), and the Archaeological and Historic Preservation Act of 1974 (16 U.S.C. §§469a-1 et seq).
18. Will cause to be performed the required financial and compliance audits in accordance with the Single Audit Act Amendments of 1996 and OMB Circular No. A-1 33, "Audits of States, Local Governments, and Non-Profit Organizations."
19. Will comply with all applicable requirements of all other Federal laws, executive orders, regulations, and policies governing this program.

*SIGNATURE OF AUTHORIZED CERTIFYING OFFICIAL 	*TITLE County Administrator
*APPLICANT ORGANIZATION County of Rockbridge	*DATE SUBMITTED MARCH 22, 2010