



Alaska Changes and Corrections

NTIA Submission April 1, 2011

Changes

- American Broadband Communications (DSL): Provider upgraded some infrastructure to maximum download speed tier 3.
- Copper Valley Telephone Cooperative, Inc. (DSL): Provider added two new DSLAM locations.
- Ketchikan Public Utilities (Fiber): Provider expanded fiber territory.
- Matanuska Telephone Association, Inc. (DSL): Provider upgraded some infrastructure to higher speeds.
- SPITwSPOTS LLC (Fixed Wireless): Provider added additional transmission points.
- Yukon Tech Inc (Fixed Wireless): Provider upgraded some infrastructure to higher speeds.

Corrections:

- Copper Valley Telephone Cooperative, Inc. (DSL): Minor prior coverage revisions.
- Ketchikan Public Utilities (DSL): Provider indicated a revision to a portion of their DSL coverage.

Changes and/or Corrections – Entirely new dataset submitted:

- AT&T Corp, Inc. (Mobile Wireless)

State of Alabama

Submission Changes

4/1/11 NTIA Submission versus 10/1/10 NTIA Submission

Census Block and Road Segment Data

- Bright House Networks, significant change in how data was received (format of submission)
- Charter Communications, significant change in how data was received (format of submission)
- Collins Communications, estimated data removed after further validation.
- DIECA/DSLnet/Megapath/New Edge Networks/Time Warner Telecom- Data held back in submission 2 due to uncertainties in NTIA compliance. Added in under new Provider Type designation
- Farmers Telecommunications-New Provider in Study.
- Galaxy Cablevision-estimate removed.
- R.M. Greene, estimate added
- Windstream, significant change in how data was received (format of submission)
- Overall significant increase in number of road segments due to obtaining TLID as well as improvements in segment gathering geospatial process

Wireless

- AL-GA Wireless, New provider in study
- CnG Wireless, New provider in study
- LEAP Wireless, New provider in study
- Southnet, New Provider in study
- Utilities Board of Sylacauga, New Provider in study
- WildBlue-Satellite footprint included as submitted.
- Error in Verizon Wireless, FRN

Address Points

- Slight change due to manner of provider data development

Middle Mile

Some points were lost due to out of State verification in check script

Arkansas Broadband Changes and Corrections April 1, 2011 Data Submission

Changes:

- Identified and added **CableSouth Media 3** data.
- **CenturyLink** expanded DSL infrastructure.
- **CoBridge Broadband** acquired all infrastructure from **Charter Communications** in Arkansas.
- **IndCo.net** expanded infrastructure in Cable plant as well as Fixed Wireless.
- Identified and added **Level 3 Communications** data.
- **Ritter Communications** expanded fiber infrastructure.
- **Ritter TriCounty** expanded DSL infrastructure.
- **Nexus Systems** expanded Fixed Wireless Infrastructure.
- **HillBilly Wireless** expanded Fixed Wireless Infrastructure.
- **The Computer Works** expanded Fixed Wireless Infrastructure.
- **WestWeb** expanded Fixed Wireless Infrastructure.
- **AT&T Mobility** expanded Mobile Broadband coverage.
- **T-Mobile** expanded Mobile Broadband coverage.
- **Verizon Wireless** expanded Mobile Broadband coverage.
- **VistaVox** (Fixed Wireless) ceased operations - coverage removed.
- **Mountain View Telephone** coverage rolled into **Yelcot Telephone** coverage at request of owner.

Corrections:

- Miscellaneous Changes and Corrections for **AT&T Communications** from provider.
- First Submission of data for previously identified **City Wireless**.
- First Submission of data for previously identified **HughesNet**.
- Miscellaneous Changes and Corrections for **Suddenlink** from provider.
- **Windstream** coverage more accurately submitted from provider.



American Samoa

Changes and Corrections Spring 2011 Data Submission

Changes:

- **Included Providers**
 - Blue Sky
 - ASTCA
 - Moana TV
- **New Providers**
 - None
- **Removed Providers**
 - None
- **Coverage Footprint Increases –**
 - ASTCA: Increased by 3 census blocks

Corrections:

- **Provider Corrections**
 - Blue Sky Communications: DBA name for TT-41 was updated to Moana TV
- **Coverage Footprint Reductions/Map Refinement -**
 - Blue Sky Communications/Moana TV: Decreased in size following provider validation and analysis





Janice K. Brewer
Governor

Scott A. Smith
Director

ARIZONA DEPARTMENT OF ADMINISTRATION
ARIZONA STRATEGIC ENTERPRISE TECHNOLOGY OFFICE
 100 NORTH FIFTEENTH AVENUE • SUITE 401
 PHOENIX, ARIZONA 85007
 (602) 542-1500

Arizona Broadband Providers
Broadband Assessment Project Data Changes and Corrections

Comparing
 Data as of Dec 31, 2011 (Submitted Spring 2011) to Data as of June 30, 2010 (Submitted Fall 2010)

Arizona Broadband Providers (BPs)	Dec. 31, 2010 Data	June 30, 2011 Data	Corrections Dec 31, 2011 Data (Submitted Spring 2011) (Submission 3)
AboveNet Communications	✓	-	First time data collected from this provider, middle mile
BlueWire	✓	X	First time data collected from this provider, fixed wireless (kml)
CIS Wireless Broadband	✓	-	First time data collected from this provider, fixed wireless (kml)
CopperNet	✓	X	First time data collected from this provider, fixed wireless (kml)
Rio Verde Wireless	✓	X	First time data collected from this provider, reverse mapped
Swift Wireless Internet	✓	-	First time data collected from this provider, reverse mapped
Transworld Network	✓	X	First time data collected from this provider, reverse mapped
Wecom, Inc.	✓	-	First time data collected from this provider, reverse mapped
Western WiMax	✓	X	First time data collected from this provider, reverse mapped
{WI-VOD Corporation}	X	✓	Removed as currently inactive
Ygnition	✓	X	First time data collected from this provider, reverse mapped
Zayo Enterprise Networks	✓	X	First time data collected from this provider, reverse mapped
Arizona Broadband Providers (BPs)	Dec. 31, 2010 Data	June 30, 2011 Data	Changes Dec 31, 2011 Data (Submitted Spring 2011) (Submission 3)
AT&T Mobility LLC	✓	✓	Updated coverage area
Beamspeed	✓	✓	Changed from 477 to shapefile coverage – fixed wireless
Bulleri Networks	✓	✓	Changed from 477 to shapefile coverage – fixed wireless
Cable One	✓	✓	Updated coverage area
Comcast Cable	✓	✓	Updated coverage area, Tuscon
CommSpeed	✓	X	Changed from 477 to shapefile coverage – fixed wireless
Copper Valley	✓	✓	Updated coverage area for ADSL, FTTH, Fixed Wireless
Covad Communications	✓	✓	Updated coverage area
Cox Communications	✓	✓	Updated coverage area – shapefile vs flat text
DataMax Wireless	✓	✓	Updated reverse mapping from Fall 2010, verified with provider
Desert iNET	✓	✓	Reversed mapped in Spring 2011, upgrade from 477 in Fall
Frontier	✓	✓	Updated coverage areas
Gila River Telecom	✓	✓	Updated coverage area
Hopi Telecom (HTI)	✓	✓	Updated coverage area
Integra Telecom (Eschelon)	✓	✓	Updated coverage area
Leap Wireless (Cricket)	✓	✓	Updated coverage area
Mediacom Southeast	✓	✓	Updated coverage area
NPG Cable (Suddenlink)	✓	✓	Updated coverage area
Orbitel Communications	✓	✓	Updated coverage area

Qwest Communications	✓	✓	Updated coverage area
Saddleback Communications	✓	✓	Updated coverage area
San Carlos Apache Telecom Utility (SCATUI)	✓	✓	Updated coverage area
South Central Utah Telephone Association	✓	✓	Updated coverage area
Sprint Communications	✓	✓	Updated coverage area
Table Top Telephone	✓	✓	Updated coverage area
TDS Telecom	✓	✓	Updated coverage area
Time Warner Cable	✓	✓	Updated coverage area
T-Mobile (Deutsche Telekom)	✓	✓	Updated coverage area
Transcend Broadband	✓	✓	Updated coverage area
TW Telecom	✓	✓	Updated coverage area
Verizon Wireless	✓	✓	Updated coverage area
Webhiway Communications	✓	✓	Updated coverage area
Wydebeam	✓	✓	Updated coverage area

Table Legend:

- ✓ BP Data Included in Submittal
- BP Data Not Expected in Submittal
- X BP Data Not Included in Submittal

Summary and Outlook:

This document represents a summary of the State of Arizona’s Changes and Corrections for provider data as of Dec 31, 2011, submitted Spring 2011 (Submission 3) cycle. In the next data collection and submittal cycle for Fall 2011 (Submission 4), Arizona will additionally begin tracking specific metrics for each BP including:

BP Coverage: Total square miles covered per BP (by technology and each speed tier), as well as the percentages of added and subtracted coverage from the previous submittal cycle.

BP Concurrence with Crowdsourcing Data: Total number of crowdsourcing data points per BP, as well as the concurrence of those data points in percentage with the BP’s coverage by those inside, those just outside by a small buffer, and those outside the buffer zone.

Additionally, Arizona plans to develop an extensive **Arizona Telecom Atlas** for the Fall 2011 (Submission 4) data collection and submittal cycle to capture for each BP an overview of their data submittal, BP Coverage and BP Concurrence with Crowdsourcing Data metrics as above, an overall map of the BP’s Arizona coverage by technology and speed, and optionally views generated during verification illustrative of anomalies and issues detected as well as comments on their resolution (if any). The biannual Arizona Telecom Atlas would serve as a management and communications tool during the data collection and verification processes, as well as be “finalized” for inclusion as an appendix in the biannual white paper.

PUBLIC UTILITIES COMMISSION

505 VAN NESS AVENUE

SAN FRANCISCO, CA 94102-3298

broadbandmapping@cpuc.ca.gov



**California Broadband Data Changes and Corrections
December 31, 2010 Data**

Changes:

- **Astound** – Upgraded to Cable Modem DOCSIS 3.0 technology and added faster speed tier
- **AT &T Mobility** - Expanded service area
- **California Broadband Services** - First round in which data was collected from provider
- **CalTel Communications** - Expanded service area
- **Charter Communications** - Merged affiliates into one company
- **Cox Communications** - Expanded service area
- **Ducor Telephone Company** - Expanded service area
- **Frontier Communications** - Expanded service area
- **Pinnacles Telephone Co.** - Expanded service area
- **Ponderosa** - Expanded service area
- **Sebastian** - Expanded service area
- **Suddenlink** - Separated company into 2 affiliates: Cebridge and Cequel
- **Time Warner Cable** - Expanded service area and upgraded to Cable Modem DOCSIS 3.0 technology
- **Verizon** - Expanded service area

Corrections:

- **CalDSL** - Decreased service territory created by propagation model output after providers feedback
- **Cal-Ore Telephone Co.** - Decreased service territory and increased speeds
- **Clearwire** - Increased speeds
- **Comcast Cable Communications, Inc.** - Decreased speeds
- **Cybernet** - Decreased service territory created by propagation model output after providers feedback
- **Etheric Networks** - Decreased speeds

- **Fire2Wire** - Decreased service territory and removed Middle Mile locations
- **Golden State Cellular** - Added Middle Mile locations
- **Indian West Valley ISP** - Added Middle Mile locations
- **Mediacom California LLC** - Middle Mile locations capacity corrected
- **Motherlode** – Converted data to wireless feature class
- **OACYS Technology** - Increased speeds
- **Sebastian** - Moved some Middle Mile locations
- **Sprint** - Increased speeds
- **TDS Communications** - Decreased service territory and increased speeds
- **Time Warner Cable** – Included different speed tiers
- **T-Mobile** - Increased speeds and moved some Middle Mile locations
- **Verizon** – Added different speed tiers
- **Volcano Communications Group** - Decreased service territory created by propagation model output after providers feedback
- **Winters** - Decreased service territory created by propagation model output after providers feedback

Colorado Broadband Data Changes and Corrections

October 1, 2010 Data Delivery Report

Changes

- **CenturyTel, Inc.**- Received new data from provider
- **Delta County Tele-comm, Inc.** - Received new data from provider
- **DIECA Communications, Inc.** - Received new data from provider
- **Dubois Telephone Exchange, Inc.** - Received new data from provider
- **JED Enterprises, Inc.** - Received new data from provider
- **New Edge Holding Company**- Received new data from provider
- **Qwest Corporation**- Received new data from provider
- **Strasburg Telephone Company**- Received new data from provider
- **Time Warner Cable**- Received new data from provider
- **tw telecom inc.**- Received new data from provider

Corrections

- **Cogent Communications, Inc** – First round in which data was collected from this provider
- **CSC Holdings, Inc.** – First round in which data was collected from this provider
- **Eschelon Telecom of Colorado, Inc.** – First round in which data was collected from this provider



State of Connecticut

Connecticut Department of Energy and Environmental Protection

Broadband Project

Change and Correction report for Submission 3

Corrections:

- Due to NTIA policy changes all blocks were converted from Census 2009 format to Census 2000. This resulted in a large number of record count updates.
- We fixed an issue with duplicate block and road records that existed in the S2 data for AT&T. This was the result of our using category of end user, and then dropping that column so the records no longer looked unique.
- Wave2Wave provides some very small wireless networks to campus like facilities (tech code 70) In the past these were represented as census blocks served. In this submission these were converted to wireless shape files.
- AT&T and Verizon Wireless made some minor adjustments to their existing 3G coverage areas, typically being a bit more conservative with areas shown as served, particularly in the NW Hills area of the state.
- In the NW corner of the state, Comcast clarified their advertised speeds in that area which showed as a decrease.

Notable Changes:

- T-Mobile had in the past reported that they did not have enough infrastructure built out in CT to market themselves as a broadband provider, and so they were not included previously. For this submission T-Mobile reported that they were now advertising themselves as a wireless provider in CT, and provided their full wireless coverage areas.
- Clearwire now offers service in CT, and was included in the data submission.
- Charter rolled out DOCSIS 3.0 to most of their service area, which is indicated by higher advertised speeds.
- Verizon and Sprint both submitted areas of increased speed in this submission. (new 4G service)



District of Columbia Broadband Data Changes and Corrections

December 2010 Data

Changes:

- **Sprint** – Added FiOS and 4G service.
- **Verizon** – Added 4G service.

Corrections:

- **Verizon** – Applied a large park and water body mask to wireline service area footprint.
- **Comcast** – Applied a large park and water body mask to wireline service area footprint.
- **Paetech** – Applied land use data to restrict service area footprint to Commercial and High Density Residential.
- **Allied** – Applied land use data to restrict service area footprint to Commercial and High Density Residential.
- **RCN** – Improved service area footprint with potential customer address list instead of subscribed customer address list.

DE_2011_04_01_Changes_and_Corrections

Delaware Broadband Data Changes and Corrections – Broadband Providers December 2010 Data (Spring 2011 Data submission)

Changes:

- AT&T expanded its coverage area by 132 mi² between Sussex and Kent Counties.
- Sprint expanded its coverage area by 5 mi².
- T-Mobile expanded its HSPA+ coverage by 4 mi² in New Castle County.
- Verizon Introduced 4G LTE coverage in New Castle County with approx. area of 165 mi².
- Level 3 Communications, LLC served more blocks in Kent County.
- Comcast change Data submission method to Submitting only changes (New blocks + Deleted blocks).
- Comcast Expanded its coverage area by 47 blocks.
- Mediacom Added 2084 Service address point location to its coverage.
- Level 3 Communications added 3 more middle mile points to its infrastructure.

Corrections:

- Wireless coverage has been removed from Census block Feature class.
- Wireless Coverage has been removed from Road Segments Feature class.
- Wireless coverage has been removed from overview feature class.

DE_2011_04_01_Changes_and_Corrections

DE Community Anchor Institutions: Additions and Deletions

Additions:

11 Added to System from 9-10 Submission to 3-11 Submission
Allen (Richard) School
BLADES ELEMENTARY SCHOOL
Boys & Girls Club of Delaware: Western Sussex Boys & Girls Club
Christina School District
Community Resource Center in Rehoboth
Neighborhood House, Inc.
New Castle County PAL Youth
Thurman Adams State Service Center
Town of Milton
William C. Lewis Elementary School
WILLIAM HENRY MIDDLE SCHOOL & KENT INTENSIVE LEARNING CENTER

Deletions:

16 Deletions from 9-10 Submission to 3-11 Submission	Reasons
COMMODORE MACDONOUGH ELEMENTARY	No longer exists
Dover Community Center	Does not exist
Dover Community Center	Does not exist
Georgetown State Service Center	Under new name
LEWES MIDDLE	Does not exist
LEWIS (WILLIAM) ELEMENTARY	Different Name
Maurice J. Moyer Academy	Closed
PAL Center	Different Name
Rehoboth Community Center	Different Name
RICHARD ALLEN ELEMENTARY	Different Name
SEAFORD BLADES KINDERGARTEN	Does not exist
Seaford Community Center	Does not exist
Shields Elementary School	Duplicate
SUSSEX CONSORTIUM	Duplicate
The Pilot School	Did not want to be involved
WM. HENRY MIDDLE SCHOOL & KENT INTENSIVE LEARNING CTR	Duplicate



Florida Changes and Corrections

NTIA Submission April 1, 2011

Changes:

- Clearwire Corporation (Mobile Wireless): Provider converted their fixed wireless system to a mobile network. They do not have any remaining fixed wireless networks in FL for the April 2011 submission.

Corrections:

- airPowered (Fixed Wireless): Previously had airPowered listed as General Reseller - Non-NTIA for the October 2010 submission.
- Comcast Cable Communications, LLC (Cable): Update received for April 2011 submission with revisions to previously submitted data from October 2010 submission.
- ITS Telecommunications Systems Inc. (Fiber): Provider corrected their coverage area from being DSL only for October 2010 submission to include their Fiber coverage for April 2011 submission.
- ITS Telecommunications Systems Inc. (DSL): Provider corrected their coverage area and speed information.
- Quincy, City of (Fiber): Provider was included for the first time for the April 2011 submission, we did not receive data from the provider previously.

Changes and/or Corrections – Entirely new dataset submitted:

- AT&T Inc. (DSL)
- AT&T Inc. (Mobile Wireless)
- Bright House Networks, LLC (Cable)
- CenturyLink (DSL)
- Quincy Telephone Company (DSL)
- Sprint Nextel Corporation (Mobile Wireless)
- T-Mobile USA, Inc. (Mobile Wireless)
- Verizon Florida LLC (DSL)
- Verizon Florida LLC (Mobile Wireless)
- Verizon Florida LLC (Fiber)

Georgia Broadband Data Changes and Corrections: December 31, 2010

Prepared for Submission by Bailey White, August 2, 2011



1. Summary

The State of Georgia submitted significant data changes and corrections in Data Set 3. In total, Georgia’s provider-miles increased by over 21,000 square miles in Data Set 3. The table below shows comparisons in terms of provider-square miles by technology type between Data Set 2 and Data Set 3.

Transmission Technology	Dataset 3 (sq. mile)	Dataset 3 Number of Providers	Dataset 2 (sq. mile)	Dataset 2 Number of Providers	Area Diff Sq. Mile	Number of Providers Diff
					(Datasets 3-2)	(Datasets 3-2)
0 – Other	0	0	0.75	1	-0.75	-1
10 – Asymmetric DSL	24782.23	26	21479.38	26	3302.85	0
20 – Symmetric DSL	657.7	4	693.49	6	-35.79	-2
30 – Other Copper Wireline	4197.97	6	14968.21	12	-10770.24	-6
40 – Cable Modem – DOCSIS 3.0	7551.14	12	7525.8	14	25.34	-2
41 – Cable Modem – Other	8205.14	15	6087.91	12	2117.23	3
50 – Optical Carrier/Fiber	3400.15	26	3200.68	24	199.47	2
60 – Satellite	58650.54	1	58650.54	1	0	0
70 – Fixed Wireless - Unlicensed	2281.97	5	2281.97	5	0	0
71 - Fixed Wireless – Licensed	3255.86	3	1524.25	3	1731.61	0
80 – Mobile Wireless	277820.33	7	253224.31	6	24596.02	1
	0	0	0	0	0	0
TOTAL	390,803.03	105	369,637.29	110	21,165.74	-5

Figure 1 Data Set 2 vs 3 Summary Comparison

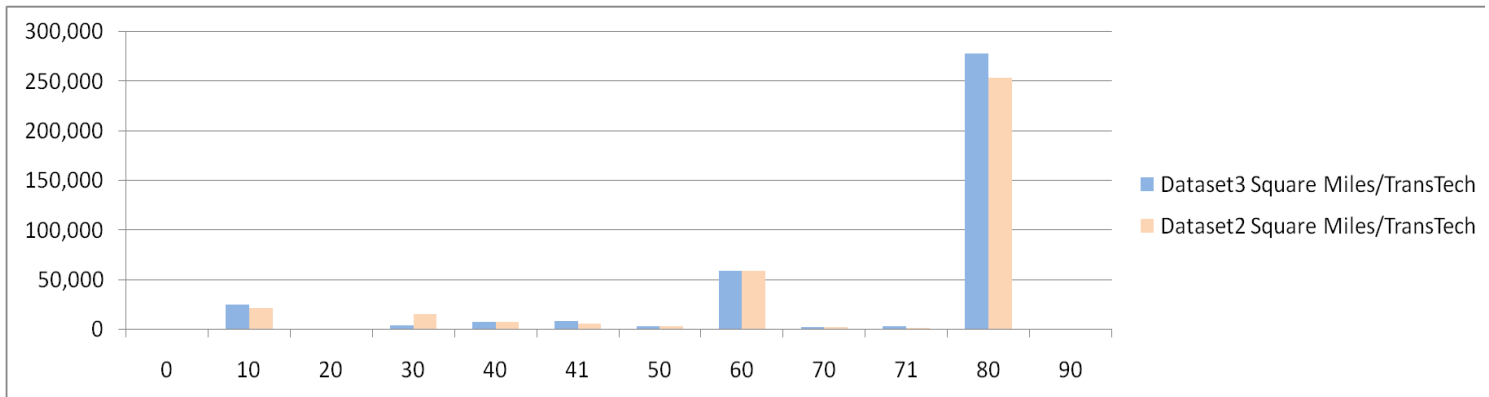


Figure 2 Comparison of Sq Miles by Technology Type (Data Set 2 and Data Set 3)

2. Additions and Corrections

The following providers were included for the first time in Data Set 3. These providers are exiting providers who had not participated in prior data sets for various reasons.

Provider Name	DBA Name	Transmission Technology	# of Blocks	Area (Sq. Miles)
Depot Street Communications Inc	Carnesville Gumlog Broadband	41	547	94.14
Ringgold Telephone Company	Ringgold Telephone Company	10	647	101.96
Ringgold Telephone Company	Ringgold Telephone Company	50	165	29.37
Broadband South	Main Street Broadband	71	2	3162.07
KitePilot Wireless Internet	KitePilot Wireless Internet	71	1	87.37

Figure 3 Providers Included for First Time in Data Set 3

In addition, Georgia worked with prior providers in verification activities to correct errors. Examples of these corrections include:

- **Alltel** – A significant existing coverage area previously left out was included in southwestern Georgia.
- **Clearwire**: Corrected Technology Type as it was previously miscategorised as Fixed Wireless.
- **Planters Rural Telephone**: Removed incorrect Technology type of Copper-Other that has been obsoleted by Planter’s updated FTTH footprint.
- **Verizon Wireless**: Added 4G coverage and also removed invalid Middle Mile (Verizon had indicated that they do not, nor have the previously, furnished middle mile information).
- **Wilkes Telephone and Electric Company**: Duplicate block geometry and attribution was discovered and corrected.
- **NextLink Wireless**: Wireless file was removed from Block and Road layers and put correctly into the Wireless coverage layer.
- **SouthEastern Services**: Wireless file was removed from Block and Road layers and put correctly into the Wireless coverage layer.

3. Changes to the Data Set

The largest changes in Georgia's Data Set 3 came from increased availability by the following providers in rank order of additional square miles:

- 1) Windstream – 2506 Sq Miles
- 2) Charter Communications – 1591 Sq Miles
- 3) Planters Telephone Cooperative – 258 Sq Miles
- 4) Cox Communications – 147 Sq Miles
- 5) CommuniComm Services – 120 Sq Miles

In census blocks greater than two square miles, Georgia's top five increases came from:

- 1) Windstream – 17,060 linear miles
- 2) AT&T – 11,052 linear miles
- 3) Charter – 5,784 linear miles
- 4) Comcast – 4,717 linear miles
- 5) Covad – 1,267 linear miles

Several strategic business activities impacted the Georgia Data Set. Megapath/DSL.net is in a merger/acquisition process with Covad. After speaking with representatives from these companies, we were advised to not include Megapath and DSL.net in this submission because much of the infrastructure and networks will be de-commissioned. Going forward, Covad will create a single comprehensive and accurate depiction of the actual service area.

EarthLink has acquired DeltaCom. DeltaCom was unable to provide actionable data in time for the dataset 3 submission, and we recognize that the timelines for submission were very short in dataset 3. Their coverage claims have also been increased by a factor of 4 since dataset 2. As DeltaCom is a business only re-seller, we have agreed with the appropriate contacts at DeltaCom to remove them from dataset 3 submission until we can both get better direction from the NTIA on how to handle business only resellers and can acquire actionable data to produce an accurate coverage are for this provider.



Guam

Changes and Corrections Spring 2011 Data Submission

Changes:

- **First Data Submission to NTIA**
- **Included Providers**
 - IT&E
 - MCV
 - Pacific Data System

Corrections:

- None





Changes and Corrections
SBDD Dec 2010 Data

Hawaii Broadband Data Changes and Corrections December 31, 2010 Data

Changes:

- **MOBI PCS** – New provider into the marketplace
- **T-Mobile** – New provider into the marketplace

Corrections:

- **Sprint** – Excluded 1 polygon due to invalid Trans-Tech value
- **Hawaiian Telcom** – Coverage area corrected to exclude 8 CO's not offering broadband
- **Sandwich Isles Communications** – First round in which data was collected from this provider
- **TW Telcom** – More accurate data resulting in increased service availability buy census block
- **Verizon** – Change in speeds reported



Iowa Changes and Corrections

NTIA Submission April 1, 2011

Changes:

- Ace Telephone Association dba Ace Communications Group (DSL): Provider expanded service area.
- AT&T Inc. (Mobile Wireless): Provider expanded service area.
- Bernard Telephone Company, Inc. (Fixed Wireless): Two new fixed wireless towers in operation.
- Brooklyn Mutual Telecommunications Cooperative (DSL): Provider upgraded infrastructure and can now offer speed tier 5 download speeds.
- Cable ONE Inc. (Cable): Provider expanded service area.
- Clear Lake Independent Telephone Company (Fiber): Provider expanded service area.
- Colo Telephone Company (Fiber): Entire service area upgraded to fiber.
- Evertek Enterprises (Fixed Wireless): Provider sent frequency change, but the coverage was still licensed the same as the last submission.
- Farmers Mutual Cooperative Telephone Company – Harlan (DSL): Provider expanded service area.
- Farmers Mutual Cooperative Telephone Company – Harlan (Fiber): Provider expanded service area.
- Farmers Mutual Telephone Company - Nora Springs dba OmniTel Communications, Inc. (Fiber): Provider submitted fiber coverage for the first time in April 2011.
- Farmers Mutual Telephone Company - Nora Springs dba OmniTel Communications, Inc. (Cable): Provider upgraded infrastructure and can now offer speed tier 8 download speeds.
- Goldfield Access Network, L.C. dba Goldfield Access Network, L.C. (DSL): Provider submitted CLEC service area for the first time in April 2011.
- Grand River Mutual Telephone Corporation dba Grand River Mutual Telephone Corporation (DSL): Provider upgraded infrastructure and can now offer speed tier 6 download speeds in portions of their service area.
- Grand River Mutual Telephone Corporation dba South Central Communications, Inc. (DSL): Provider upgraded infrastructure and can now offer speed tier 6 download speeds in portions of their service area.
- I-35 Telephone Company dba Interstate Communications (Fiber): Portions of provider service area upgraded to fiber.
- Kalona Cooperative Telephone Company (Fiber): Portions of provider service area upgraded to fiber.
- Leap Wireless International, Inc. (Mobile Wireless): Provider upgraded infrastructure and can now offer speed tier 3 upload speeds.
- Lehigh Valley Cooperative Telephone Association (Fiber): Provider expanded service area.



- Martelle Cooperative Telephone Association (DSL): Provider upgraded infrastructure and can now offer speed tier 5 download speeds.
- Minburn Communications dba Minburn Telephone Company (Fiber): Entire DSL service area upgraded to fiber.
- Minburn Communications dba Minburn Telecommunications, Inc. (DSL): Provider submitted DSL coverage for the first time in April 2011.
- Minburn Communications dba Minburn Telephone Company (DSL): Provider upgraded infrastructure and can now offer speed tier 6 download speeds.
- Mutual Telephone Company (Fiber): Provider submitted fiber coverage for the first time in April 2011.
- NetConX, Inc. (Fixed Wireless): Four new fixed wireless towers in operation.
- New Ulm Telecom, Inc. (DSL): Provider upgraded infrastructure and can now offer speed tier 4 download speeds.
- Northwest Telephone Cooperative Association dba Northwest Telephone Cooperative Association (DSL): Provider downgraded speeds to tier 5 download.
- Preston Telephone Company (DSL): Provider upgraded infrastructure and can now offer speed tier 5 download speeds.
- South Slope Cooperative Telephone Company (Fiber): Infrastructure upgraded to provide speed tier 8 download speeds.
- SpeedNet, LLC (Fixed Wireless): Provider upgraded towers to cover a larger service area.
- Spencer Municipal Utilities (Cable): Provider upgraded infrastructure and can now offer speed tier 10 download speeds.
- Spencer Municipal Utilities (Fiber): Provider upgraded infrastructure and can now offer speed tier 10 download speeds.
- Sprint Nextel Corporation (Mobile Wireless): Provider expanded service area.
- T-Mobile USA, Inc. (Mobile Wireless): Provider expanded service area and upgraded infrastructure to offer speed tier 6 download speeds in certain locations.
- Van Horne Cooperative Telephone Company (Fiber): Provider submitted fiber coverage for the first time in April 2011.
- Verizon Communications, Inc. (Mobile Wireless): Provider expanded service area.
- Webster-Calhoun Cooperative Telephone Association (Fiber): Entire service area upgraded to fiber.
- West Iowa Telephone Company (DSL): Provider upgraded infrastructure and can now offer speed tier 7 download speeds.
- West Liberty Telephone Company dba Liberty Communications (Fiber): Provider expanded service area.
- Woolstock Mutual Telephone (Fixed Wireless): New fixed wireless tower in operation.

Corrections:

- Ayrshire Farmers Mutual Telephone Company (DSL): Provider indicated speed tier 7 download speeds last time, but changed data to speed tier 5 download speeds for April submission.



- BitWind Communications, LLC (Fixed Wireless): Provider submitted initial data for April 2011 after refusing to participate in the past two submissions.
- CenturyLink (DSL): Provider added speed tier 4 download speeds for a small portion of their coverage, in addition to their previously included speed tier 5 download speeds.
- Eastlight, LLC (Fixed Wireless): Provider submitted full dataset for the April 2011 submission, and was the first time the provider was shown on the map.
- Grundy Center Municipal Utilities (Fixed Wireless): Provider submitted initial data for April 2011 submission.
- Grundy Center Municipal Utilities (Cable): Provider submitted initial data for April 2011 submission.
- Logonet (Fixed Wireless): Provider submitted initial data for April 2011 submission.
- Midlowa Net (Fixed Wireless): Provider requested reduction in wireless service area.
- Midlowa Net (DSL): Provider submitted initial data for April 2011 submission.
- Midwest Broadband LLC (Fixed Wireless): Provider submitted initial data for April 2011 submission.
- Minburn Communications dba Minburn Telecommunications, Inc. (Fiber): Provider submitted initial data for April 2011 submission.
- Monarc Technologies (Fiber): Provider submitted initial data for April 2011 submission.
- South Slope Cooperative Telephone Company (Fiber): Service area slightly reduced.
- United States Cellular Corporation (Mobile Wireless): Provider was in service previously, but this is the first time data was submitted.
- Walnut Telephone Company dba Walnut Communications (DSL): Provider coverage expanded for more accurate representation.
- Walnut Telephone Company dba Walnut Communications (Cable): Provider coverage trimmed down for more accurate representation.
- Walnut Telephone Company dba Walnut Communications (Fiber): Provider coverage trimmed down for more accurate representation.

Changes and/or Corrections – Entirely new dataset submitted:

- Massena Telephone Company (DSL)
- Qwest Corporation (DSL)

State of Idaho

Submission Changes

4/1/11 NTIA Submission versus 10/1/10 NTIA Submission

Census Block and Road Segment Data

-Citizens/Frontier-New data submitted.

-Fairpoint, Revised submission format, verified with provider.

-Rural Telephone Company (Martel)l, New provider in study.

-Mud Lake Telephone Cooperative, New provider in study

-New Edge, Time Warner Telecom, Data held back in submission 2 due to uncertainties in NTIA compliance. Added in under new Provider Type designation

-Overall significant increase in number of road segments due to obtaining TLID as well as improvements in segment gathering geospatial process

Wireless

- Custer Telephone Broadband Services LLC., New Provider in study.

- Gem State Communications. New Provider in study.

-St. Maries Gazette Record, New Provider in study.

-Wilderness Wireless, New Provider in study.

-WildBlue-Satellite footprint included as submitted.

-Error in Verizon Wireless, FRN

Address Points

-Change due to manner of provider data development

Middle Mile

Some points were lost due to out of State verification in check script



INDIANA

Changes and Corrections Spring 2011 Data Submission

Changes:

- **New Providers**
 - Accelplus
 - AirHOP Wireless
 - AT&T Indiana
 - AT&T Mobility LLC
 - Blueriver Networking Services
 - Cequel Communications, LLC/Suddenlink
 - CSInet Internet Access
 - Cypress Communications
 - Eastern Indiana Wifi Inc.
 - Endeavor Communications
 - Fairnet Wireless
 - Foundation Telecommunications, Inc.
 - France Telecom Corp. Solutions LLC
 - Geetel Communications
 - Global Crossing North America, Inc.
 - Indiana Communications
 - KC Online LLC





INDIANA

Changes and Corrections Spring 2011 Data Submission

- Kendallville Internet
- Level 3 Communications, LLC
- MetaLINK Technologies, Inc
- Metro FastNet
- Michiana Wireless
- Northern Indiana Technologies, Inc.
- OnlyInternet.net
- PDS Wireless/Precision Data Solutions
- PSC
- Richmond Power and Light
- SHEERConnection
- SpeedNet/Keyon
- Sprint
- State of the Art Communications
- SugarDog Internet
- Surf-ICI
- TDS Telecom
- T-Mobile
- Total Logic Systems (TLS.net)





INDIANA

Changes and Corrections Spring 2011 Data Submission

- True 802 Wireless
 - TV Cable of Rensselaer & Winamac
 - Washington County Rural Telephone Cooperative
 - WATCH Communications
 - WIN Enterprises
 - Windstream
 - WOW!
 - YDial LLC
 - Zayo Enterprise Networks
 - Zig Wireless
 - U4Corp/GGF, LLC
-
- **Removed Providers**
 - We removed wireless providers that were included in a public domain dataset we obtained when we originally started our program. We have replaced this with provider validated datasets.





Kansas Changes and Corrections

NTIA Submission April 1, 2011

Changes:

- Atwood Cable Systems, Inc. (Cable): New provider in service for April 2011 submission.
- Blue Valley Tele-Communications, Inc. (Cable): Provided expanded cable territory to two other towns and upgraded speed capabilities.
- Blue Valley Tele-Communications, Inc. (DSL): Provider converted some DSL infrastructure to fiber.
- Blue Valley Tele-Communications, Inc. (Fiber): Provider expanded fiber territory and upgraded speed capabilities.
- BWTelcom (Fiber): Provider expanded fiber territory and upgraded speed capabilities.
- City of Chanute (Fiber): New provider in the fiber residential market for April 2011 submission.
- Clearwire Corporation (Mobile Wireless): New system in service.
- Craw-Kan Telephone Cooperative, Inc. (Fixed Wireless): New provider offering fixed wireless services in one town for April 2011 submission.
- Craw-Kan Telephone Cooperative, Inc. (Fiber): Provider completed the rest of their fiber build in one of their exchanges and upgraded speed capabilities.
- Cunningham Communications, Inc. (Fiber): Provider expanded fiber territory into one town.
- Eagle Communications, Inc. (Fixed Wireless): Provider added an additional transmission point.
- Eagle Communications, Inc. (Fiber): Provider expanded fiber territory and upgraded speed capabilities.
- Golden Belt Telephone Association, Inc. (Cable): Provider upgraded infrastructure to higher speeds.
- Golden Belt Telephone Association, Inc. (Fiber): Provider upgraded infrastructure to higher speeds.
- H&B Communications, Inc. (Fixed Wireless): Provider added additional transmission points.
- H&B Communications, Inc. (DSL): Provider converted some DSL infrastructure in one exchange to fiber.
- H&B Communications, Inc. (Fiber): Provider expanded fiber territory.
- Home Communications, Inc. (DSL): Provider converted DSL infrastructure in two exchanges to fiber.
- Home Communications, Inc. (Fiber): Provider expanded fiber territory.
- KanOkla Telephone Association, Inc. (Fixed Wireless): Provider added additional transmission points.



- Knology of Kansas dba Sunflower Broadband (Cable): Knology of Kansas acquired Sunflower Broadband.
- Knology of Kansas dba Sunflower Broadband (Fixed Wireless): Knology of Kansas acquired Sunflower Broadband.
- Mercury Wireless, LLC (Fixed Wireless): Provider added additional transmission points.
- Midwest Mobile Radio (Fixed Wireless): New provider in service for April 2011 submission.
- Mutual Telephone Company (Fixed Wireless): Provider added additional transmission points.
- North Central Kansas Community Network (Fixed Wireless): Provider downgraded licensed speeds of network to download speed tier 5 and upload speed tier 4.
- Peoples Telecommunications, LLC (DSL): Provider upgraded infrastructure to higher speeds.
- Rural Telephone Service Company, Inc. dba Nex-Tech, Inc. (Fixed Wireless): Provider added additional transmission points.
- Rural Telephone Service Company, Inc. (DSL): Provider downgraded speeds to download speed tier 4 with expansion of fiber.
- Rural Telephone Service Company, Inc. (Fiber): Provider expanded fiber territory and altered speed capabilities.
- South Central Telephone Association (DSL): Provider added DSL in two small areas.
- South Central Telephone Association (Fiber): Provider expanded fiber territory.
- Stelera Wireless, LLC (Mobile Wireless): New provider in service for April 2011 submission.
- Sumner Cable TV, Inc. (Fixed Wireless): Provider added additional transmission points.
- Sumner Cable TV, Inc. (Cable): Provider upgraded infrastructure to higher speeds.
- Tri-County Telephone Association, Inc. (Fiber): Provider added fiber coverage in two exchanges.
- Tri-County Telephone Association, Inc. (DSL): Provider converted some DSL infrastructure to fiber.
- Tri-County Telephone Association, Inc. (Fixed Wireless): Provider increased wireless strength of one transmission point.
- Valnet Holdings LLC (Fixed Wireless): Provider added transmission point from Oklahoma that spread into Kansas
- Wheatland Broadband Services (Fixed Wireless): Provider added additional transmission points.
- Wilson Telephone Company, Inc. (Fiber): Provider added fiber coverage in two areas of their exchanges.
- Zito Midwest, LLC (Cable): Zito Media acquired Galaxy Cablevision.

Corrections:

- Allegiance Communications Holdings, Inc (Cable): Revised coverage after field validation.



- Comcast Cable Communications, LLC (Cable): Update received for April 2011 submission with revisions to previously submitted data from October 2010 submission.
- Eagle Communications, Inc. (Cable): Revised coverage in one town due to small discrepancy found by provider along with a upgraded speed capabilities
- Moundridge Telephone Company, Inc. (DSL): Provider indicated they also provide symmetrical service along with the previously submitted asymmetrical.
- Pioneer Telephone Association, Inc. (Cable): Revised coverage in multiple cable towns due to various small discrepancies.
- SWKO, Inc. (Fixed Wireless): New provider for April 2011 submission that was previously unresponsive.
- United States Cellular Corporation (Mobile Wireless): U.S. Cellular was in service previously, but this is the first time data was submitted.
- Wamego Telecommunications Company, Inc. (DSL): Provider indicated that DSL is also available in same area as the previously submitted fiber.
- Wheatland Broadband Services (Fixed Wireless): Provider removed a transmission point.

Changes and/or Corrections – Entirely new dataset submitted:

- AT&T Communications of Texas, Inc. (Mobile Wireless)
- AT&T Communications of Texas, Inc. (DSL)
- Cable ONE Inc.(Cable)
- CenturyLink (DSL)
- Cequel Communications (Cable)
- Leap Wireless International, Inc. (Mobile Wireless)
- Sprint Nextel Corporation (Mobile Wireless)
- Time Warner Cable LLC (Cable)
- T-Mobile USA, Inc. (Mobile Wireless)
- Verizon Communications, Inc. (Mobile Wireless)



Commonwealth of Kentucky
State Broadband Initiative (SBI)
Broadband Mapping Project
April 1, 2011 NTIA Submittal (December 2010 Data)
Changes/Corrections from Previous Fall 2010 Submission

Changes:

- **Broadview Networks, Inc.:** Indicated they are re-seller
- **Galaxy Cable Inc.:** Bought by Zito Media
- **Kentucky Data Link:** Sold to Windstream
- **MegaPath/DSLnet:** Indicated they are re-seller and bought by Covad Communications
- **Ohio County Direct Net:** Indicated they are re-seller
- **SpeedBeam Wireless, Inc.:** Sold to Shelby Broadband
- **VCI Internet Services:** Indicated they are re-seller

Corrections:

- **Address Points:** The fall 2010 submittal included all address points, but in this Spring 2011 submittal only address points in census blocks greater than 2 sq miles are included
- **Satellite Providers:** Not included in the fall 2010 submittal, but they are included in this Spring 2011 submittal
- **Access Cable Television, Inc.:** Speed tiers corrected for inaccuracies
- **BellSouth Telecommunications, Inc.:** Speed tiers corrected for inaccuracies
- **Brandenburg Telecom LLC:** Speed tiers corrected for inaccuracies, Technology offering added
- **BTC:** Speed tiers corrected for inaccuracies
- **Cebridge Acquisition, LLC:** First time delivering data for this provider
- **Cellco Partnership and its Affiliated Entities:** Speed tier offering added
- **Cequel III Communications I, LLC:** First time delivering data for this provider
- **City of Bardstown:** First time delivering data for this provider
- **City of Williamstown:** Did not provide data – Submitted 3rd party data – First time delivering data for this provider
- **Comcast Cable Communications, LLC:** Speed tiers and Technology corrected for inaccuracies, Name corrected for inaccuracies
- **Electric Plant Board of the City of Hopkinsville:** Name corrected for inaccuracies
- **Foothills Rural Telephone Cooperative Corporation Inc.:** Speed tiers and technology corrected for inaccuracies
- **Frank Howard TV Cable:** Did not provide data – Submitted 3rd party data – First time delivering data for this provider



Commonwealth of Kentucky
State Broadband Initiative (SBI)
Broadband Mapping Project
April 1, 2011 NTIA Submittal (December 2010 Data)
Changes/Corrections from Previous Fall 2010 Submission

- **Galaxy Cable Inc.:** Speed tiers corrected for inaccuracies

Corrections (continued):

- **Hughes Communications, Inc.:** First time delivering data for this provider
- **Insight Phone of Kentucky, LLC:** Did not provide data – Submitted 3rd party data – First time delivering data for this provider
- Leap Wireless International, Inc.: Speed tiers corrected for inaccuracies
- **Leslie County Telephone Company:** Speed tiers corrected for inaccuracies
- **Perfect TV Co.:** Did not provide data – Submitted 3rd party data – First time delivering data for this provider
- **Salem Telephone Company:** Speed tier offering added
- **Shelby Broadband:** First time delivering data from this provider
- **Skycasters, LLC:** First time delivering data for this provider
- **Skyway:** First time delivering data for this provider
- **Sprint Nextel Corporation:** Speed tier offering added
- **StarBand Communications Inc.:** First time delivering data for this provider
- **T.V. Service:** First time delivering data for this provider
- **Thacker-Grigsby Telephone Company:** Speed tiers and technology corrected for inaccuracies
- **T-Mobile USA, Inc.:** Speed tier offering added
- **TW Telecom of Kentucky LLC:** Speed tiers and technology corrected for inaccuracies
- **WildBlue Communications, Inc.:** First time delivering data for this provider
- **Windstream Kentucky East, LLC:** Speed tiers corrected for inaccuracies, Name corrected for inaccuracies



State of Louisiana
State Broadband Data and Development (SBDD)
Broadband Mapping Project
December 2010 Data
April 1, 2011 NTIA Submittal

Changes:

- **Wave2Wave Communications, Inc.** – No longer have service in Louisiana. Removed from submission.
- **Galaxy Cable Inc.** – Sold to Media III.
- Address points – For Spring 2011 we only submitted address points in census blocks greater than 2 sq miles. Fall 2010 address points – 116,836; Spring 2011 address points – 27,031
- Wireless Service – Included satellite providers in Spring 2011 submission. Polygons reduced from 2,263 in Fall 2010 to 28 in Spring 2011 due to shapefile change in submittals by T-Mobile and Verizon

Corrections:

- **Hughes Communications, Inc.** – First round in which data was collected from this provider.
- **Xfone** – Reseller except for the area around Hammond. Removed 112,163 census blocks and 67,116 road segments.
- **Cox Communications** – Failed to provide complete data set by submission date. Fall 2010 census blocks – 31,848; Spring 2011 census blocks – 15,135
- Baker identified an error in the initial data submission shortly after April 1, 2011, and notified NTIA. NTIA requested we correct the error and resubmit the entire data submission which was accomplished.

Massachusetts Broadband Data Changes and Corrections December 31, 2010 Data

Changes:

- **Access Plus Communications** – Added service on Nantucket (bought existing service that was not previously included)
- **Sprint** – Added 4G service
- **Verizon Wireless** – Added 4G service

Corrections:

- **AT&T Mobility** – Significantly expanded service area from 2008 coverage to 2010 coverage
- **Covad Communications** – First round in which data was collected from this provider
- **GAW High Speed Internet** – First round in which data was collected from this provider
- **HughesNet** – First round in which data was collected from this provider
- **Level 3 Communications** – First round in which data was collected from this provider
- **Lighttower** – Removed from availability data because they can't provide new service within 10 days
- **Princeton** – Removed incorrect blocks outside of town boundaries (per provider)
- **RCN BecoCom** – Added blocks where new subscribers were located, filling in holes in previous service area (based on subscriber locations)
- **Sidera Networks** – Changed DBA name and corrected transmission technology from "all other" to "fiber optic"
- **Shrewsbury Electric and Cable Operations** – Confirmed and removed incorrect blocks outside of town boundaries (per provider)
- **Verizon** – Removed blocks from select towns based on feedback from knowledgeable community representatives and collected maximum advertised speeds at the block level (rather than county)
- **Warwick Broadband Service** – First round in which data was collected from this provider



Maryland Broadband Mapping Initiative
Changes and Corrections
SBDD December 2010 Data

Changes:

- **Sprint** – Added 4G service
- **Verizon Wireless** – Added 4G service
- **Antietam Cable** – Speed change for MaxAdUp and MaxAdDown

Corrections:

- **Allied Telecom Group, LLC** – First round in which data was collected from this provider
- **Atlantech Online, Inc** - First round in which data was collected from this provider
- **Atlantic Broadband (Penn), LLC** - First round in which data was collected from this provider
- **AT&T Mobility LLC** – Expanded service area coverage, removed coverage areas less than 0.125 square miles and “holes” less than 0.125 square miles
- **Believe Wireless Broadband** - First round in which data was collected from this provider
- **Bloosurf** - First round in which data was collected from this provider
- **Charter Communications Inc** – Updated data includes addition of blocks
- **Clearwire Corporation** – Expanded service area coverage, removed coverage areas less than 0.125 square miles and “holes” less than 0.125 square miles
- **Comcast Corporation** – Updated data includes addition and subtraction of blocks
- **Covad Communications Company** – Updated data includes addition and subtraction of blocks
- **Level 3 Communications, LLC** – Updated data includes addition and subtraction of blocks
- **New Edge Network, Inc** – Updated data includes addition and subtraction of blocks
- **Sidera Networks** – Changed DBA name
- **One Communications** - First round in which data was collected from this provider
- **RCN & RCN Business Solutions** – Change DBA name
- **Cricket Communications** - Expanded service area coverage, removed coverage areas less than 0.125 square miles and “holes” less than 0.125 square miles
- **Sprint** - Expanded service area coverage, removed coverage areas less than 0.125 square miles and “holes” less than 0.125 square miles
- **T-Mobile** - Expanded service area coverage, removed coverage areas less than 0.125 square miles and “holes” less than 0.125 square miles
- **TW Telecom** – Updated data includes addition of blocks served
- **Vector Data Systems** - Expanded service area coverage, removed coverage areas less than 0.125 square miles and “holes” less than 0.125 square miles
- **Verizon Maryland** – Updated data includes addition and subtraction of blocks
- **Verizon Wireless** - Expanded service area coverage, removed coverage areas less than 0.125 square miles and “holes” less than 0.125 square miles
- **Zayo Bandwidth** - First round in which data was collected from this provider



Maine Broadband Data Changes and Corrections

December 31, 2010 Data

Submitted by:

James W. Sewall Company on behalf of ConnectME Authority - Maine Broadband Mapping Grantee

August 10, 2011

Changes:

- **AT&T Mobility** - Expanded Mobile broadband coverage approximately 50% NE.
- **Sprint Nextel Corporation** – Expanded Mobile broadband coverage.
- **T-Mobile** – Expanded Mobile broadband coverage.
- **Verizon Communications Inc.** – Expanded Mobile broadband coverage.
- **Axiom Technologies** – Expanded Fixed Wireless Infrastructure.
- **Fairpoint Communications Inc.** – Expanded DSL infrastructure.
- **Telephone and Data Systems, Inc.** – Expanded DSL infrastructure.
- **MidCoast Internet Solutions** – First Data Submission.
- **Comcast** – Expanded Cable Broadband Coverage.
- **Maine Fiber Company** – 2 Middle Mile splices added.

Corrections:

- **Union River Telephone Company** – DSL and Fiber broadband coverage corrected with more well defined limits.
- **Time Warner Cable Inc.** – TWC identified 33 towns that should not have been included in original data submission. Error discovered by TWC.
- **Chebeague.net** – Relocated access point. View shed re-processed.



Michigan Changes and Corrections

NTIA Submission April 1, 2011

Changes:

- Ace Telephone Company of Michigan Inc. (DSL): Ace Telephone acquired Peninsula Telephone.
- Agri-Valley Communications, Inc. dba Thumb Cellular, LLC (Mobile Wireless): New mobile wireless towers in operation.
- Air Advantage, LLC (Fixed Wireless): New fixed wireless towers in operation.
- Baraga Telephone Company (DSL): Plant expansion.
- Barry County Telephone Company dba Message Express Internet (Fixed Wireless): New fixed wireless towers in operation.
- Block Communications, Inc. dba Buckeye CableSystem (Cable): Provider upgraded infrastructure and can now offer speed tier 9 download speeds.
- Camp Communication Services, Inc. dba West Michigan Wireless ISP (Fixed Wireless): New fixed wireless towers in operation.
- Cherry Capital Connection, LLC (Fixed Wireless): New fixed wireless towers in operation.
- Clearwire Corporation (Mobile Wireless): New mobile wireless system.
- CMS Internet LLC (Fixed Wireless): New fixed wireless towers in operation.
- Crystal Automation Systems, Inc (Fixed Wireless): New fixed wireless towers in operation.
- DMCI Broadband, LLC (Fixed Wireless): New fixed wireless towers in operation.
- Drenthe Telephone Company (DSL): Provider upgraded infrastructure and can now offer speed tier 5 download speeds.
- FNW, LLC (Fixed Wireless): New fixed wireless towers in operation.
- Frontier Communications Corporation (DSL): Plant expansion.
- Hiawatha Communications, Inc. dba Hiawatha Telephone Company (DSL): Plant expansion and provider upgraded infrastructure and can now offer speed tier 5 download speeds in select locations.
- Hiawatha Communications, Inc. dba Hiawatha Telephone Company (Fiber): Provider converted some DSL areas to FTTH.
- Hiawatha Communications, Inc. dba Chippewa County Telephone Company (DSL): Provider upgraded infrastructure and can now offer speed tier 7 download speeds in select locations.
- I-2000, Inc. (DSL): Received new Reseller-DSL data.
- Michwave Technologies, Inc. (Fixed Wireless): Provider upgraded some infrastructure and can now offer speed tier 5 to more areas.
- Ogden Communications, Inc. (DSL): Provider upgraded infrastructure and can now offer speed tier 5 download speeds.
- Parish Communications (Cable): Provider upgraded infrastructure and can now offer speed tier 5 download speeds.
- Pasty.Net, Inc. (Fixed Wireless): New fixed wireless towers in operation.
- Sand Creek Communications Company (DSL): Plant expansion.



- Sister Lakes Cable TV (Cable): Provider upgraded infrastructure and can now offer speed tier 5 download speeds.
- Small Business Solutions Group L.L.C. dba RuralReach.com (Fixed Wireless): New fixed wireless towers in operation.
- Summit Digital Holdings, Inc. (Cable): Provider purchased a small cable system to expand their territory.
- The Computer Care Company, Inc. (Fixed Wireless): New fixed wireless towers in operation.
- Westphalia Telephone Company (DSL): Plant expansion and provider upgraded infrastructure and can now offer speed tier download speeds.

Corrections:

- Bright House Networks, LLC (Cable): Bright House was previously non-responsive, but they provided data this round.
- Endless Journey, Inc. (Fixed Wireless): Endless Journey was previously non-responsive, but they provided data this round.
- Iron Bay Computer & Design (Fixed Wireless): Provider had indicated speed tier 7 last round for some towers, but they should have been tier 5; speed tier corrected for April submission.
- Lighthouse Computers, Inc. (Fixed Wireless): Lighthouse Computers was previously non-responsive, but they provided data this round.
- Tucker Communications, Inc (Fixed Wireless): This is the first time data was submitted for this provider; they were previously in service, but information was not available.
- United States Cellular Corporation (Mobile Wireless): U.S. Cellular was previously in service, but this is the first round data has been submitted.

Changes and/or Corrections – Entirely new dataset submitted:

- AT&T Inc. (DSL)
- AT&T Inc. (Mobile Wireless)
- CenturyLink (DSL)
- Charter Communications, Inc. (Cable)
- Comcast Cable Communications, LLC (Cable)
- Leap Wireless International, Inc. (Mobile Wireless)
- Sprint Nextel Corporation (Mobile Wireless)
- TDS Telecommunications Corporation (DSL)
- Time Warner Cable LLC (Cable)
- T-Mobile USA, Inc. (Mobile Wireless)
- Verizon North Inc. (Mobile Wireless)



Minnesota Changes and Corrections

NTIA Submission April 1, 2011

Changes:

- Alliance Communications Cooperative, Inc. (DSL): Provider converted DSL town infrastructure to fiber.
- Alliance Communications Cooperative, Inc. (Fiber): Provider expanded fiber territory into single town.
- Arvig Communication Systems (DSL): Two other DSL subsidiaries added.
- Arvig Communication Systems dba Redwood County Telephone (Fixed Wireless): Arvig acquired Redwood County Telephone.
- Arvig Communication Systems (Fiber): Provider expanded fiber territory into DSL areas.
- Barnesville Municipal Telephone (DSL): Provider upgraded infrastructure to higher speeds.
- Blue Earth Valley Telephone Company (DSL): Provider upgraded DSL infrastructure in one town to max download speed tier 3.
- Bradco-Wisp, Inc. (Fixed Wireless): Provider added an additional transmission point.
- Clear Choice Communications (Fixed Wireless): New provider in service for April 2011 submission.
- Clearwire Corporation (Fixed Wireless): Added small area of service.
- Clearwire Corporation dba CLEAR (Mobile Wireless): New provider in the mobile market for April 2011 submission.
- Consolidated Telephone Company (DSL): Provider converted some DSL infrastructure in two exchanges to fiber.
- Consolidated Telephone Company (Fiber): Provider expanded fiber territory into two exchanges.
- diversiCOM (DSL): Provider expanded DSL territory in a couple areas.
- diversiCOM (Fiber): Provider expanded fiber territory in one town.
- Hiawatha Broadband Communications, Inc. (Fiber): Provider expanded fiber territory in two towns.
- Info Link Wireless, Inc. (Fixed Wireless): New town wireless propagation to replace old propagation.
- Interstate Telecommunications Cooperative, Inc. (Fiber): New fiber provider for April 2011 submission.
- Interstate Telecommunications Cooperative, Inc. (DSL): Provider upgraded infrastructure to higher speeds.
- InvisiMax, Inc. (Fixed Wireless): Provider added additional transmission points.
- Lonsdale Telephone Company, Inc. (Fiber): Provider upgraded infrastructure to higher speeds.
- Manchester-Hartland Telephone Company (Fiber): New fiber provider for April 2011 submission intended to replace DSL in future.
- Minnesota Valley TV Improvement Corporation (Fixed Wireless): Provider added additional transmission points.



- New Ulm Telecom Inc. (DSL): Provider upgraded infrastructure to higher speeds.
- NorthfieldWiFi LLC (Fixed Wireless): New provider in service for April 2011 submission.
- Park Region Mutual Telephone Company (Fiber): Provider upgraded infrastructure to higher speeds in one exchange area.
- Park Region Mutual Telephone Company (DSL): Provider upgraded infrastructure to higher speeds in one exchange area.
- Paul Bunyan Rural Telephone Cooperative (Fiber): updated extent of fiber coverage.
- Paul Bunyan Rural Telephone Cooperative (DSL): Provider converted some DSL infrastructure to fiber.
- Polar Telcom, Inc. (DSL): Provider upgraded infrastructure to higher speeds.
- Red River Rural Telephone Association (Fixed Wireless): Provider added additional transmission points.
- Red River Rural Telephone Association (DSL): Provider converted some DSL infrastructure to fiber and upgraded DSL to higher speeds.
- Red River Rural Telephone Association (Fiber): Provider expanded fiber territory.
- Scott Rice Telephone Co. (DSL): Provider converted some DSL infrastructure to fiber in few small areas.
- Scott Rice Telephone Co. (Fiber): Provider expanded fiber territory into few small areas.
- Upsala Cooperative Telephone Association (Fiber): New fiber provider for April 2011 submission.
- Upsala Cooperative Telephone Association (DSL): Provider upgraded infrastructure to higher speeds in exchange area.
- VAL-ED Joint Venture, LLP (Fixed Wireless): Provider upgraded one network to higher speed capabilities.
- Western Telephone Company (DSL): Provider upgraded infrastructure to higher speeds.
- Wolverton Telephone Company (DSL): Provider upgraded infrastructure to higher speeds.
- Woodstock Telephone Company (DSL): Provider upgraded infrastructure to higher speeds.
- Woodstock Telephone Company (Fiber): Provider upgraded infrastructure to higher speeds.

Corrections:

- Ace Telephone Association (DSL): Provider indicated entire service area is DSL and not fiber as it was in Oct. 2010 submission.
- Arvig Communication Systems (DSL): Provider indicated to change lower speed tier group in coverage and now all speeds are max download speed tier 7 and max upload speed tier 2.
- Christensen Communications Company (DSL): Added coverage to single town that was overlooked.
- CitEscape, LLC (Fixed Wireless): Revised coverage due to broadband requests in provider coverage area that were unserviceable.
- FTTH Communications (Fiber): New provider for April 2011 submission that was previously unresponsive.
- Paul Bunyan Rural Telephone Cooperative (Fiber): Provider corrected the fiber line coverage between exchanges.



- Paul Bunyan Rural Telephone Cooperative (DSL): Provider corrected transmission code to asymmetrical.
- Savage Communications Inc. (Cable): Provider reduced speed in one town.
- Starpoint Communications, Inc. (Fixed Wireless): New provider for April 2011 submission that was previously unresponsive.
- US Internet of Minnetoka (Fixed Wireless): New provider for April 2011 submission that was previously unresponsive.

Changes and/or Corrections – Entirely new dataset submitted:

- AT&T Corp, Inc. (Mobile Wireless)
- Cable ONE Inc. (Cable)
- CenturyLink (DSL)
- Charter Communications, Inc. (Cable)
- Comcast Cable Communications, LLC (Cable)
- Frontier Communications of Minnesota, Inc. (DSL)
- Qwest Corporation (DSL)
- Sprint Nextel Corporation (Mobile Wireless)
- TDS Telecommunications Corporation (DSL)
- TDS Telecommunications Corporation (Fiber)
- T-Mobile USA, Inc. (Mobile Wireless)
- Verizon Communications, Inc. (Mobile Wireless)



Missouri Broadband Changes & Corrections

NTIA Submission 03
01 April 2011

- Changes

- Added 351 new Middle Mile connection points
- Added 239 new Community Anchor Institutions
- Added providers:
 - Bay's Internet (0018912576)
 - LTO Communications, LLC (0019008036)
 - Radio Wire, Inc. (0018912626)
- Updated coverage for:
 - AT&T Mobility, LLC (0004979233)
 - AT&T Southwest (0016657918)
 - Cable One, Inc (0003474327)
 - Suddenlink Communications – Cebridge (0014367650)
 - Suddenlink Communications – Friendship Cable (0004999025)
 - CenturyLink (0018626853)
 - Charition Valley Telephone Corporation (0002549392)
 - Charition Valley Telecom Corporation (0008437147)
 - Charter Communications (0017179383)
 - City Utilities Springfield (SpringNet) (0004759411)
 - Covad Communications Company (0003753753)
 - T-Mobile (0006945950)
 - Ellington Telephone Company (0003741956)
 - Farber Telephone Company (0003748043)

- BPS Networks (0016026965)
- Fidelity Cablevision (0000013326)
- Fidelity Telephone Company (0002550309)
- Green Hills Technologies (0003736246)
- Green Hills Telephone ILEC (0003736238)
- Green Hills Telecommunications Services (0003736253)
- Cricket Communications, Inc. (Leap Wireless International) (0002963528)
- Level 3 Communications, LLC (0003723822)
- McDonald County telephone Co (0002504058)
- Sprint Nextel Corporation (0003774593)
- TDS Telecommunications Corporation – Stoutland (0002502243)
- TDS Telecommunications Corporation – New London (0002529733)
- TDS Telecommunications Corporation – Orchard Farm (0003767340)
- Townes Tele-Comm, Inc. – Chocktaw Telephone Company (0004928792)
- Townes Tele-Comm, Inc. – MoKan Dial, Inc. (0004928750)
- Verizon Wireless – Cellco Partnership (0003290673)
- Windstream Corporation (0014400220)
- YHTI (0014205504)

- Corrections

- Provider data reported to 2000 Census Blocks instead of 2009 Census Block
- Terrestrial Mobile Wireless coverage removed from Overview shapefile
- Terrestrial Fixed Wireless – Unlicensed coverage removed from Overview shapefile
- Terrestrial Fixed Wireless – Licensed coverage removed from Overview shapefile
- Added previously identified providers:
 - Cable America Missouri, LLC (0015466766)
 - FairPoint Communications Missouri, Inc (0014710388)
 - MCC Missouri (Mediacom) (0005184247)
 - New Wave Communications (001202938)
 - Ozark Computers (0018658179)
 - Sho-Me Technologies, LLC (0008875890)
 - Suddenlink Communications – Cequel III Communications II (0009725870)
 - Total Wireless Communications (0018726729)
 - NPG Cable, Inc. (St. Joseph Cablevision) (0002508687)
 - United States Cellular Corporation (0004372322)



Commonwealth of the Northern Mariana Islands

Changes and Corrections Spring 2011 Data Submission

Changes:

- **First Data Submission to NTIA**
- **Included Providers**
 - IT&E
 - PTI Pacifica Inc.

Corrections:

- None





Mississippi

Changes and Corrections

Spring 2011 Data Submission

Changes:

- **New Providers**
 - Cable One: Providing coverage for TT-41 (Cable Modem – Other)
 - Bay Spring: DBA name is TEC, supports Asymmetric xDSL and Fiber to the End User
 - Cricket Communications, Inc.: New wireless provider added this round

- **Removed Providers**
 - None

- **Coverage Footprint Increases –**
 - AT&T Mississippi
 - TDS Telecom
 - Charter Communications Inc.
 - CenturyLink
 - Comcast
 - GulfPines Communications
 - Sledge Telephone Co. Inc.
 - Southern Light LLC
 - Telepak Networks, Inc.
 - Verizon Wireless
 - Windstream Mississippi LLC

Corrections:

- **Provider Footprint Corrections**
 - DIXIE-NET
 - Doubled in size for DSL, now that there's a classification to separate resellers in the model

 - TEC of Jackson, Inc.
 - Doubled in size for DSL, now that there's a classification to separate resellers in the model





Mississippi

Changes and Corrections

Spring 2011 Data Submission

- **Coverage Footprint Reductions/Map Refinement - Resulting from Validation (Provider Portal)**
 - TDS Telecom
 - Cellular South
 - Covad Communications Company
 - Delta Telephone Co. Inc.
 - Franklin Telephone Co Inc.
 - Frontier Communications of Mississippi, LLC
 - Kentucky Data Link Inc.
 - TW Telecom of Mississippi LLC





**Montana Broadband Data Changes and Corrections
December 31, 2010 Data (Spring 2011 Update)**

Changes:

- **Antilles Wireless, LLC** – Changed Name & DBA (was Antilles-Billings).
- **CSC Holdings, Inc** – Changed Name & DBA (acquired Bresnan Communications, LLC).
- **Montana Internet Corporation** – Changed Name (was Montana Internet Corp.).
- **Range Telephone Cooperative, Inc.** - Added Fiber to the End User.

Corrections:

- **3 Rivers Telephone Cooperative, Inc.** - Removed Symmetric xDSL; submitted detailed coverage shapefiles to replace their customer addresses.
- **Antilles Wireless, LLC** – Submitted list of census block groups and maximum advertised download speed.
- **Cable Montana, LLC** - Submitted list of census block groups and maximum advertised download speed.
- **Cellco Partnership** – Submitted detailed coverage shapefile.
- **CenturyLink, Inc.** – Submitted spreadsheet with updated census block and road segment data.
- **CSC Holdings, Inc** – submitted detailed coverage shapefiles (census blocks greater than 2 sq mi, census blocks less than 2 sq mi, and TIGER roads). Data attributes include Technology, maximum advertised download/upload speed.
- **Interbel Telephone Cooperative, Inc.** – Submitted revised maximum advertised download/upload speed.
- **Mid-Rivers Internet** – Submitted updated maps; Refined census block area due to new coverage processing methodology.
- **Montana Internet Corporation** – Submitted maximum advertised download/upload speed.
- **Nemont Telephone Cooperative, Inc.** – Submitted updated coverage files; refined census block area due to new method of handling provider submitted coverage.
- **Project Telephone Company** - Submitted updated coverage files; refined census block area due to new method of handling provider submitted coverage.
- **Qwest Corporation** - Submitted updated coverage files and maximum advertised download speeds; refined census block area due to new method of handling provider submitted coverage.
- **Range Telephone Cooperative, Inc.** - Submitted updated coverage files; refined census block area due to new method of handling provider submitted coverage.
- **West River Cooperative Telephone Company** - First round in which data was collected from this provider; added Fiber to the End User.



The e-NC Authority Changes and Corrections: December 31, 2010 Data

Data changes:

- AT&T Mobility LLC: Provider placed fiber at cell towers.
- CenturyLink: Provider upgraded backhaul and increased build-out.
- Clearwire: Provider added wireless coverage areas.
- Time Warner Cable: Provider upgraded to DOCSIS 3 and increased speeds.
- T-Mobile: Provider added wireless coverage areas.
- Verizon Wireless: Provider placed fiber at cell towers.

Data corrections:

- Charter: data quality improved by reporting year 2000 census blocks (versus 2009 previously) and shapefiles versus tabular data previously. Significant increase in street segment data captured as a result.
- Cricket Communications: identified and included as an NC broadband provider for the first time.
- Frontier: first availability data included, transferred with legal agreement from Verizon wireline during acquisition process.
- Level 3 Communications: data included for first time since Spring 2010.
- Lexcom: previously thought to be no longer operating under this name post-acquisition by Windstream, but were included for the first time in Windstream's data submission then confirmed to be still operating as Lexcom.
- MCNC: data from this middle mile and CAI-only provider included for the first time.
- Randolph Telephone: data included from Spring 2010 tabular address ranges.
- Randolph TMC: data included from Spring 2010 tabular address ranges.
- SkyCatcher: data from this wireless provider included for the first time.
- Time Warner Cable: data quality improved by reporting year 2000 census blocks (versus 2009 previously) and shapefiles versus tabular data previously. Significant increase in street segment data captured as a result.
- Several address-level datasets likely reflect improved data quality (greater % address matches) due to streamlined workflow on geocoding, and development of a new script sorting new address data from previously geocoded records.



North Dakota Broadband Data Changes and Corrections December 31, 2010 Data (Spring 2011 Update)

Corrections:

- **BEK Communications Cooperative** – Submitted data to update census blocks and maximum advertised download/upload speeds.
- **Cellco Partnership** – Submitted detailed coverage shapefile.
- **Consolidated Telcom** – Submitted data to update census block coverage.
- **Dakota Central Telecommunications Cooperative** – Added Terrestrial Fixed Wireless – Licensed; submitted a list of census blocks to update census block coverage, data to update coverages, and updated maximum advertised download/upload speeds.
- **Dickey Rural Telephone Cooperative** – Submitted shapefile to update census block coverage.
- **Griggs County Telephone Company** – Submitted data to update census block coverage and maximum advertised speeds.
- **i29 Wireless** – First round in which data was included for this provider (coverage map from website); added Terrestrial Fixed Wireless – Unlicensed.
- **Inter-Community Telephone Company** – Submitted data to add four wireless coverage areas and maximum advertised speeds.
- **InvisiMax Inc.** – Submitted data for 3 new access point/transmission locations and revised maximum advertised speeds.
- **Midcontinent Communications** – Removed Cable Modem-Other; submitted data with revised maximum advertised speeds of 50 mbps down and 5 mbps up.
- **Moore & Liberty Telephone Company** – Submitted data to update census block coverage and maximum advertised speeds.
- **Moore & Liberty/Griggs County Telephone** - Changed Cable Modem DOCSIS 3.0 to Cable Modem – Other; submitted data to update census block coverage.
- **Nemont Telephone Cooperative** – Submitted updated coverage files; Refined census block area due to new method of handling provider submitted coverage.
- **North Dakota Telephone Company** – Added Fiber to the End User; submitted data to update census block coverage and maximum advertised speeds.
- **Northwest Communications Cooperative, Inc.** - Submitted data to update census block coverage and maximum advertised speeds.
- **Polar Communications Mutual Aid Corporation** – Submitted data and service addresses to update census block coverage and maximum advertised speeds.
- **Polar Telcom, Inc.** - Removed Asymmetric xDSL; submitted data and service addresses to update census block coverage and maximum advertised speeds.
- **Qwest Corporation** – Submitted updated coverage; Refined census block area due to new coverage processing methodology.
- **Red River Rural Telephone Association, Inc.** – Submitted data to update coverage.
- **Reservation Telephone Cooperative** – Removed Symmetric xDSL; submitted data to update census blocks.
- **Roberts County Telephone Cooperative** - First round in which data was collected from this provider - updated service to 768 kbps and therefore met the requirements for broadband (previously below qualified broadband speed); added Asymmetric xDSL.
- **Sprint** - Submitted data to expand coverage area to the west along I-90.
- **SRT Communications, Inc.** – Removed Terrestrial Fixed Wireless – Licensed; submitted data to update census blocks and maximum advertised speeds.
- **West River Cooperative Telephone Company** – Submitted coverage area to replace subscriber addresses, in turn expanding their coverage area in comparison to the Fall 2010 submission.
- **West River Telecommunications Cooperative** - Submitted updated coverage area and provided speed information for all technologies.



TETRA TECH, INC.

- **Wolverton Telephone Company** - Submitted data and service addresses to update census block coverage and maximum advertised speeds.



**Nebraska Public Service Commission Data Changes and Corrections:
December 31, 2010 Data**

Changes:

- | | |
|------------------------------|-----------------------|
| • Century Link | Updated coverage area |
| • Elsie Communications, Inc. | Updated coverage area |
| • PC Telecom | Updated coverage area |

Corrections:

- | | |
|-------------------------------------|--|
| • Cricket Communications, Inc. | First Round in which provider submitted data |
| • Hartman Telephone Exchanges, Inc. | First Round in which provider submitted data |
| • K & M Telephone Company, Inc. | First Round in which provider submitted data |
| • Level 3 | First Round in which provider submitted data |





UNIVERSITY of NEW HAMPSHIRE

New Hampshire Broadband Data Changes and Corrections

December 31, 2011 Data

Submitted by:

New Hampshire Broadband Mapping & Planning Program

August 4, 2011

Changes:

- **Access Communications** – Informed that they are a reseller of service
- **All Media, Inc.** – Went out of business
- **Alterracom Networks** – Went out of business
- **Argent Communications** – Added fixed-wireless broadband to wireline internet service offering
- **Cooperative Resources** – Went out of business
- **DESTEK** – Informed that they are a reseller of service
- **Finowen** – Was purchased by Great Auk Wireless and no longer in business as a separate entity
- **First Bridge** – Merged with NHvt and are no longer listed as a separate entity
- **MV Communications** – Informed that they are a reseller of service
- **RNK Communications** – Do not offer broadband service in NH
- **Tamworth Wireless** – New provider and first round in which data was collected
- **Topsham Communications** – New provider and first round in which data was collected
- **USAi.net** – Informed that they are a reseller of service
- **Verizon Wireless** – Added 4G service
- **VT Telephone** – Do not offer broadband service in NH
- **Wireless Horizon** – Went out of business
- **WorldPath** – Completed merger with BayRing and is no longer a separate entity

Corrections:

- **AT&T Mobility** – Removed area that fell outside of state boundary (per provider)
- **Bay Ring** – First round in which data was collected
- **Charter Communications** – First round in which data was collected
- **Dunbarton Telephone** – First round in which data was collected
- **G4** – First round in which data was collected
- **Granite State Telephone** – First round in which data was collected
- **Level 3 Communications** – First round in which data was collected
- **Lighttower** – First round in which data was collected

New Jersey Broadband Data Changes and Corrections December 2010 Submission versus June 2010 Submission

Submitted By: New Jersey Broadband Mapping Program
9 August 2011

Changes:

- Sidera : Company name change, formerly RCN
- Sprint: Added shape files for 4G coverage
- Service Electric Sparta: Transitioned from DOCSIS to DOCSIS 3
- Verizon Wireless: Added shape files for 4G coverage
- Numerous providers submitted data that varied from the prior submission in terms of census blocks covered or available speeds

Corrections:

- Broadview Networks: Provider whose data was not included in prior submission
- Cavalier: Inadvertently duplicated middle mile data during processing
- Hughes Network Systems, LLC: Satellite provider whose data was not submitted previously
- StarBand Communications: Satellite provider whose data was not submitted previously
- T-Mobile: many small polygons were merged into fewer large polygons
- Verizon Wireless: Duplicate shapes found in prior submission were removed
- WildBlue Communications: Satellite provider whose data was not submitted previously
- Xchange Telecom: First submission from this provider

Broadband Data Changes and Corrections: December 31, 2010

April 1, 2011 NTIA Submittal

Changes:

No.	Internet Service Provider Name	Changes
1.	Agave, LLC	First round of participation.
2.	E.N.M.R Telephone Cooperative	Wireless data included. Also changes in DSL data because of the inclusion of Census Blocks within the total service area.
3.	Higher Speed Internet, LLC	First round of participation.
4.	Key Communications (Southwestern Wireless)	First round of participation.
5.	Level 3 Communications, LLC	First round of participation.
6.	PVT Networks, Inc.	Wireless data included.
7.	Sacred Wind Communications, Inc.	First round of participation.
8.	Sierra Communications	Wireless data added.
9.	T-Mobile USA, Inc.	Data included for the first time. T-Mobile provided data for fall 2010, but after the NTIA Submittal date.
10.	TW Telecom of New Mexico, LLC	First round of participation.
11.	Valley Telephone Cooperative, Inc.	Data included for the first time.

Corrections:

Census Blocks Feature Class: For wireless data, only shapefiles for the coverage area are provided in the Wireless Feature Class, and not for Census Blocks (which were provided for wireless data in the previous submittal to NTIA).

No.	Internet Service Provider Name	Corrections
12.	ATT Mobility LLC	Expanded wireless coverage area compared to June 2010.
13.	Baja Broadband Operating Company, LLC	No significant changes in the data.
14.	Cable One, Inc.	No significant changes in the data.
15.	Cebridge Acquisition, L.P. (Suddenlink Communications)	No significant changes in the data.
16.	Cellco Partnership (Verizon Wireless)	Expanded wireless coverage area compared to June 2010 data.
17.	Comcast Cable Communications LLC	Corrected data by removing the video coverage from the previous submittal to NTIA.
18.	Copper Valley Telephone, Inc.	No significant changes in the data.
19.	Covad Communications Company	No significant changes in the data.
20.	Cyber Mesa Computer Systems, Inc.	No significant changes in the data.

21.	Dell Telephone Cooperative, Inc.	No significant changes in the data.
22.	La Jicarita Rural Telephone Cooperative, Inc.	Corrected data based on the variations in the speed information.
23.	Leaco Rural Telephone Cooperative, Inc.	No significant changes in the data.
24.	Leap Wireless International, Inc. (Cricket)	No significant changes in the data.
25.	Mescalero Apache Telecom, Inc.	No significant changes in the data.
26.	Navajo Communications Company (Frontier Navajo Communications)	Corrected the coverage area based on the CO/RT locations.
27.	Panhandle Telephone Cooperative, Inc.	No significant changes in the data.
28.	Qwest Corporation	No significant changes in the data.
29.	Roosevelt County Rural Telephone Cooperative, Inc.	No significant changes in the data.
30.	Sprint Nextel Corporation	Expanded wireless coverage area compared to June 2010.
31.	Time Warner Cable LLC	No significant changes in the data.
32.	Tularosa Basin Telephone Cooperative, Inc.	Also changes in DSL data because of the inclusion of Census Blocks within the total service area.
33.	US Cable of Coastal-Texas, LP	No significant changes in the data.
34.	Western New Mexico Telephone Company, Inc.	Corrected the coverage area based on the CO/RT locations.
35.	Valor Telecommunications of Texas, L.P.	No significant changes in the data.
36.	Yucca Telecommunications Systems, Inc.	No significant changes in the data.



Nevada Changes and Corrections

NTIA Submission April 1, 2011

Changes:

- AT&T Inc. (Mobile Wireless): Expansion of service area.
- CC Communications (Fiber): Expansion of service area.
- Cellco Partnership (Mobile Wireless): Provider upgraded infrastructure and can now offer speed tier 6 download speeds.
- Citizens Telecommunications Company of Nevada (DSL): This provider was absorbed by Cellco Partnership for the April 2011 submission.
- Clearwire Corporation dba Clearwire (Fixed Wireless): Expansion of service area.
- Clearwire Corporation dba CLEAR (Mobile Wireless): New mobile provider.
- Hot Spot Broadband, Inc. (Fixed Wireless): Provider upgraded infrastructure and can now offer speed tier 5 download speeds.
- InfoWest, Inc. (Fixed Wireless): New fixed wireless provider. Also, there was a merger with Hardy Comnett.
- Performance Computing Internet (Fixed Wireless): New fixed wireless tower in operation.
- Schatnet Internet LLC (Fixed Wireless): New fixed wireless tower in operation.
- Sprint Nextel Corporation (Mobile Wireless): Provider upgraded infrastructure and can now offer speed tier 5 download speeds.
- T-Mobile USA, Inc. (Mobile Wireless): Expansion of service area.
- Vegas Wifi Communications LLC (Fixed Wireless): New fixed wireless tower in operation.

Corrections:

- Arizona Nevada Tower Corporation dba WestNet Nevada (Fixed Wireless): Provider divided their service area among to subsidiaries, WestNet Nevada and Atmosplash. One tower was also deleted from coverage area.
- Arizona Nevada Tower Corporation dba Atomsplash (Fixed Wireless): Provider divided their service area among to subsidiaries, WestNet Nevada and Atmosplash. One tower was also deleted from coverage area.
- AT&T Inc. (DSL): Service area corrected.
- CenturyLink (DSL): The provided modified service area for April 2011 submission.
- Charter Communications, Inc. (Cable): The provided modified service area for April 2011 submission.
- High Desert Internet Services (Fixed Wireless): Provider was nonresponsive for the October 2010 submission but participated in the April 2011 submission.
- LasVegas.Net LLC (Fixed Wireless): Provider was nonresponsive for the October 2010 submission but participated in the April 2011 submission.
- Leap Wireless International, Inc. (Mobile Wireless): Provider corrected service area from October 2010 submission.

Provider Name	Filing Company DBA	FRN	NY Change and Correction Notes
AT&T Mobility LLC	AT&T Mobility	0004979233	Added to wireless coverage area in R3
Atlantic Broadband (Penn), LLC	Atlantic Broadband	0009596883	Minor Changes fom R2 to R3 (corrections)
Cable Communications of Willsboro, Inc.	Cable Communications of Willsboro	0003777307	Changes due to Provider corrections
Cablevision Lightpath, Inc.	Cablevision/Optimum	0003510195	Changes due to possible build-out or corrections--> Provider gives all new data (CBs and StSegs) every round
Cassadaga Telephone Corporation	DFT Communications/Netsync	0003749819	Minor Changes fom R2 to R3 (corrections)
Cellco Partnership [and its Affiliated Entities]	Verizon Wireless	0003290673	Added 4G service in R3
Champlain Telephone Company	Champlain Telephone	0003779675	New Provider in Round 3
Charter Communications Inc.	Charter Communications	0017179383	Changes due to possible build-out or corrections--> Provider gives Add/Delete changes
Chazy & Westport Telephone Corporation	Chazy & Westport Telephone Corp	0005050083	Change due to Provider buildout (Fiber) & corrections
Clarity Connect	Clarity Connect	0017669227	New Provider in Round 3
Clearwire Corporation	Clearwire	0017775628	Added to wireless coverage area in R3
Cogent Communications Group	Cogent Communications	0019066034	Provider reported additional service area
Comcast of New York, LLC	Comcast	0014383657	Changes due to Provider corrections
Covad Communications Company	Covad Communications	0003753753	Changes due to possible build-out or corrections--> Provider gives all new data (CBs and StSegs) every round
CSC Holdings, Inc.	Cablevision/Optimum	0003735909	Changes due to possible build-out or corrections--> Provider gives all new data (CBs and StSegs) every round
Delhi Telephone Company	Delhi Telephone	0004334439	New Fiber buildout reported for R3
Deposit Telephone Company	TDS Telecom	0003766805	Changes due to possible build-out or corrections--> Provider gives all new data (customer addresses) every round
Edwards Telephone Company	TDS Telecom	0003766896	Changes due to possible build-out or corrections--> Provider gives all new data (customer addresses) every round
Empire Telephone Corp.	Empire Telephone Corp	0004314605	Changes due to Fiber buildout
Fiber Technologies Networks, L.L.C.	Fiber Technologies Networks	0006797849	Coded Fiber Rings instead of Address Data in R3
Frontier Communications Corporation	Frontier Communications	0003576352	Changes due to added DSLAM locations
Haefele TV Inc.	Haefele TV	0003775400	Changes due to possible build-out or corrections; new data delivery
Hancock Telephone Company	Hancock Telephone	0003436367	Minor Changes fom R2 to R3 (corrections), refined speed data, added middle mile/DSLAM locations
Keene Valley Video, Inc.	Keene Valley Video	0004975496	Changes due to improved speeds
Leap Wireless International, Inc.	Leap Wireless International	0002963528	Changes due to spectrum changes
Level 3 Communications, LLC	Level 3 Communications	0003723822	Changes due to possible build-out or corrections--> Provider gives all new data (customer addresses) every round
Long Island Fiber Exchange, Inc.	Long Island Fiber Exchange	0011008349	Minor Changes fom R2 to R3 (corrections)
Middleburgh Telephone Company, The	The Middleburgh Telephone Company	0003454410	New R3 Provider (DSL)
Mid-Hudson Cablevision, Inc.	Mid-Hudson Cablevisison	0000014936	New R3 Provider (Fiber and Cable)

Provider Name	Filing Company DBA	FRN	NY Change and Correction Notes
Mountain Wireless, LLC	Mountain Wireless	0019503168	New R3 provider (Fixed Wireless, Tech Code 70, Spectrum 6)
MTC Cable (Heart of the Catskills)	MTC Cable	0004984837	Changes due to possible build-out or corrections
Newport Telephone Company, Inc.	Newport Telephone	0003435633	Changes due to increased speed offerings
NextGen Telephone, Inc.	NextGen Telephone, Inc.	0004319455	Out of business
Nicholville Telephone Co., Inc.	Nicholville Telephone	0004314480	Changes due to possible build-out or corrections; new data delivery
One Communications Corp.	One Communications	0015337702	Changes due to possible build-out or corrections; new data delivery
Oriskany Falls Telephone Corp	TDS Telecom	0003435492	Changes due to possible build-out or corrections--> Provider gives all new data (customer addresses) every round
Port Byron Telephone Company	TDS Telecom	0003767530	Changes due to possible build-out or corrections--> Provider gives all new data (customer addresses) every round
RCN Telecom Services of New York, LP	RCN Telecom Services	0019653401	Former FRN (R1-2): 0003252426; New PROV NAME & DBA in R3
Sidera Networks, LLC	RCN Metro	0006254403	New ProvName & DBA R3 (formerly RCN NY Comm/RCN Metro)
SLIC Network Solutions, Inc.	SLIC Network Solutions	0011412129	Changes due to possible build-out or corrections; new data delivery
Southern Cayuga County Cablevision, LLC	Southern Cayuga County Cablevision	0009870304	Change due to Provider buildout (Fiber)
Southern Tier Wireless	Southern Tier Wireless	0018540245	New in Round 3
Sprint Nextel Corporation	Sprint	0003774593	Added 4G service in R3
Taconic Telephone Corporation	FairPoint Communications	0003772753	Changes due to Provider corrections
Time Warner Cable LLC	Time Warner Cable	0013430244	Changes due to possible build-out or corrections--> Provider gives all new data every round
T-Mobile USA, Inc.	T-Mobile USA	0006945950	Changes in Coverage Areas, no changes to max advertised speeds
Towerstream, Inc.	Towerstream, Inc.	0007097355	Opted out for Round 3
Township Telephone Company	TDS Telecom	0003434958	Changes due to possible build-out or corrections--> Provider gives all new data (customer addresses) every round
tw telecom of new york l.p.	tw telecom	0004351425	Changes due to possible build-out or corrections; new data delivery
Verizon New York Inc.	Verizon New York	0003469442	Changes due to possible build-out or corrections--> Provider gives all new data (CBs and StSegs) every round
Vernon Telephone Company, Inc.	TDS Telecom	0003767696	Changes due to possible build-out or corrections--> Provider gives all new data (customer addresses) every round
Westelcom Network	Westelcom	0005050141	New in Round 3
Windstream Corporation	Windstream	0014400220	Changes due to possible build-out or corrections; new data delivery



Ohio Changes and Corrections

NTIA Submission April 1, 2011

Changes:

- Amplex Internet (Fixed Wireless): New fixed wireless towers in operation
- Block Communications, Inc. (Cable): Upgrade to network, speeds increased.
- Cincinnati Bell Telephone Company LLC (Fiber): Upgrade to network, expansion of service area.
- Clearwire Corporation (Fixed Wireless) : Provider made changes to network to include both Fixed Wireless and Mobile Wireless platforms, entirely new dataset provided for April 2011 submission.
- Clearwire Corporation dba Clear (Mobile Wireless): Provider was included the Mobile Wireless platform for the first time in the April 2011 submission due to changes to network.
- Country Connections LLC (Fixed Wireless): New fixed wireless towers in operation
- Erie County Cablevision, Inc. (Cable): Upgrade to network, speeds increased.
- Frontier Communications Corporation (DSL): Upgrade to network, expansion of service area.
- Intellwave, LLC (Fixed Wireless): New fixed wireless towers in operation
- JB-Nets, LLC (Fixed Wireless): New fixed wireless towers in operation
- Massillon Cable TV, Inc. (Cable): Upgrade to network, expansion of service area.
- MetaLINK Technologies, Inc. (Fixed Wireless): New fixed wireless towers in operation
- New Knoxville Telephone Company dba Gold Radio Group (Fixed Wireless): Change to tower site resulting in change in coverage area.
- Vaughnsville Telephone Company, Inc dba Vaughnsville Communications (DSL): Upgrade to network, however speeds and service area remain the same.

Corrections:

- Avolve, Inc. (Fixed Wireless): Provider was included for the first time in the April 2011 submission because we did not have their participation previously.
- Cincinnati Communications (BPL): Provider was included for the first time in the April 2011 submission because we did not have their participation previously.
- Comcast Cable Communications, LLC (Cable): Update received for April 2011 submission with revisions to previously submitted data from October 2010 submission.
- Computers4U (Fixed Wireless): Provider was included for the first time in the April 2011 submission because we did not have their participation previously.
- DataBit Solutions (Fixed Wireless): Provider was included for the first time in the April 2011 submission because we did not have their participation previously.
- Hometown Cable Company (Fiber): Provider was included for the first time in the April 2011 submission because we did not receive a full dataset previously.



Changes and/or Corrections – Entirely new dataset submitted:

- AT&T Inc. (DSL)
- AT&T Inc. (Mobile Wireless)
- CenturyLink (DSL)
- Cequel Communications (Cable)
- Cincinnati Bell Telephone Company LLC (Mobile Wireless)
- Leap Wireless International, Inc. (Mobile Wireless)
- Sprint Nextel Corporation (Mobile Wireless)
- TDS Telecommunications Corporation (DSL)
- Time Warner Cable LLC (Cable)
- T-Mobile USA, Inc. (Mobile Wireless)
- Verizon Communications, Inc. (Mobile Wireless)

Oklahoma Broadband Mapping Project - Data Changes and Corrections: December 31, 2010

April 1, 2011 NTIA Submittal

Corrections

Provider	Description
AtLink Services	First round in which data was collected from this provider.
Chickasaw Telephone Company	First round in which data was collected from this provider.
Pine Telephone Company	First round in which data was collected from this provider.
South Central Telephone Association	First round in which data was collected from this provider.

Changes

Provider	Description
AT&T Communications of Texas (DBA: AT&T Southwest)	Provider adjusted service area.
AT&T Mobility LLC	Provider adjusted service area. Provider expanded spectrums.
CableOne	Provider adjusted service area.
Carnegie Telephone Company	Provider adjusted service area. Provider adjusted technology of transmission.
Cellco Partnership (DBA: Verizon Wireless)	Provider adjusted service area. Provider expanded spectrums.
Century Link (CenturyTel, Inc)	Provider adjusted service area.
Community Cable Vision Company	Provider adjusted service area. Provider improved speeds.
Cross Telephone Company (DBA: Cross Cable LLC.)	Provider adjusted service area. Provider improved or degraded speeds.
Leap Wireless International (DBA: Cricket Communications)	Provider adjusted service area. Provider improved or degraded speeds.
Level 3 Communications LLC.	Provider adjusted service area.

Medicine Park Telephone Company	Provider adjusted service area.
Oklahoma Telephone and Telegraph	Provider adjusted service area. Provider improved speeds.
Panhandle Telecommunication Systems, Inc.	Provider improved speeds.
Panhandle Telephone Cooperative Inc.	Provider adjusted service area. Provider improved speeds.
Pioneer Telephone Cooperative	Provider adjusted service area. Provider improved or degraded speeds.
Santa Rosa Telephone Coop	Provider adjusted service area.
Southwest Oklahoma Telephone	Provider improved speeds.
Sprint Nextel Corporation (DBA: Sprint)	Provider adjusted service area.
SuddenLink Communications	Provider adjusted service area. Provider improved or degraded speeds.
TDS Telecommunications Corp.	Provider adjusted service area.
T-Mobile	Provider adjusted service area.
United Telephone Association Inc. (DBA: United Telephone)	Provider adjusted service area.
Wilnet Communications	Provider adjusted service area.



Oregon

Changes and Corrections Spring 2011 Data Submission

Changes:

- **New Providers**
 - Ashland Fiber Network
 - Mapped Transmission Technologies: 41, 50, 70 and 71
 - XO Communications Services, Inc.
 - Mapped Transmission Technologies: 20 and 30

- **Removed Providers**
 - See Gorge Ventures Inc. under corrections

- **Coverage Footprint Increases -**
 - Reliance Connects (Cascade Utilities)
 - Peak Internet
 - Increased for Transmission Technology 70
 - CenturyLink
 - Charter Communications Inc.
 - Used provider name (based on their source name) therefore changed to DBA name for consistency with NTIA frequency table
 - Frontier Communications Northwest Inc.
 - Clear Creek Mutual Telephone Company
 - Increased for both 20 and 41 technologies
 - Covad Communications Company
 - Increased for Transmission Technology 20
 - Douglas Services, Inc.
 - Added Transmission Technology 10
 - Increased coverage for Transmission Technology 50
 - Eastern Oregon Telecom
 - Level 3 Communications, LLC
 - MINet
 - People's Telephone Company
 - Increased coverage for Transmission Technology 10 and 50
 - Qwest Corporation
 - SCS Communications
 - SawNet
 - Sprint
 - TW Telecom of Oregon LLC
 - Increased coverage for Transmission Technology 50
 - Verizon Wireless





Oregon

Changes and Corrections Spring 2011 Data Submission

- **Other Changes:**

- Frontier Communications Northwest Inc.: Updated DBA name and increased footprint based on updated infrastructure

Corrections:

- **Provider Footprint Corrections**

- Gorge Ventures Inc (DBA Name: Qnect.net) Removed wireless coverage as it was suspect and reclassified the provider to non-cooperative after several attempts to improve coverage footprint for public map display
- Oregon Telephone Corporation – Footprint for Transmission Technology 50 was refined significantly with provider’s input, as the original footprint looked like large fiber rings on the map
- PocketiNet Communications Inc – Two middle mile points were removed as they were located in Washington State
- Comcast – Source data originally supplied was later discovered to only contain changes. Following outreach and confirmation with the provider, we received the entire updated data and corrected the footprint.

- **Coverage Footprint Reductions/Map Refinement - Resulting from Validation (Provider Portal) by DBA**

- AboveNet Communications Inc.
- Cal-Ore Communications Inc.
- Douglas Services, Inc.
 - Decreased for Transmission Technology 70
- TDS Telecom
- Integra Telecom
 - Decreased for Transmission Technology 10 and 20
- LS Networks
 - Decreased in 3 Middle Mile infrastructure points per provider’s request
- Molalla Communications Company
- North-state Telephone Co.
 - Decreased for Transmission Technology 50
- St Paul Telephone
- Stayton Cooperative Telephone Company
 - Decreased for Transmission Technology 10 and 50
- TW Telecom of Oregon LLC
- Decreased coverage for Transmission Technology 30





Changes:

- **Fisk Internet Services, LLC:** Provider indicated they are part of GetWireless.
- **Pitcairn Cable:** Provider indicated they were purchased by Comcast Cable Communications, LLC.

Corrections:

- **Address Points:** The October 2010 submittal included all address points, but the April 2011 submittal only included address points in census blocks greater than 2 square miles.
- **Satellite Providers:** Not included in October 2010 submittal, but are included in the April 2011 submittal.
- **Adams CATV Inc:** Technology of transmission corrected for inaccuracies.
- **Atlantic Broadband (Penn), LLC:** Max Speed tier offerings increased.
- **Borough of Kutztown:** Speed tiers corrected for inaccuracies.
- **CenturyTel, Inc:** Speed tiers corrected for inaccuracies.
- **Coaxial Cable TV Corp:** Technology of transmission corrected for inaccuracies.
- **Comcast Cable Communications, LLC:** Speed tiers corrected for inaccuracies.
- **Conterra Ultra Broadband Holdings, Inc.:** Service area corrected for technology of transmission and speed tier offerings.
- **EagleZipCom LLC:** Speed tiers increased.
- **Hughes Communications, Inc.:** First time delivering data for this provider.
- **Laurel Highland Telephone Company:** Technology of transmission corrected for inaccuracies.
- **Level 3 Communications, LLC:** Technology of transmission corrected for inaccuracies.
- **Northeastern Telephone:** Speed tier corrected for inaccuracies.
- **One Communications:** Technology of transmission offering added.
- **PAETEC Communications Inc.:** Technology of transmission corrected for inaccuracies.
- **Skycasters:** First time delivering data for this provider.
- **Skyway:** First time delivering data for this provider.
- **Starband Communications:** First time delivering data for this provider.
- **Wildblue Communications:** First time delivering data for this provider.
- **Wire-Teleview:** First time delivering data for this provider.
- **XO Communications:** First time delivering data for this provider.



Puerto Rico Changes and Corrections

NTIA Submission April 1, 2011

Changes:

- AT&T Inc. (Mobile Wireless): Provider supplied a new modified coverage area.
- T-Mobile USA, Inc. (Mobile Wireless): Provider now offers service in Puerto Rico.

Corrections:

- Claro / PRT (DSL): New data set provided for April 2010. Validation process ongoing.
- San Juan Cable Holding, LLC, OneLink Communications (Cable): OneLink has been non-responsive and has not submitted data. Field validation was completed to create estimated service area.

Rhode Island Changes and Corrections NTIA Submission April 1, 2011

Changes To The Data:

1. **AT&T Wireless** – Updated data was received from the provider. The coverage area was updated to better match actual coverage areas.
2. **Covad Communications Co. / DIECA** – Updated data was received from the provider. The coverage area was updated to better match actual coverage areas. All data was provided in census block format. The 2 census blocks previously submitted in street segment format were removed from their coverage area along with other census blocks.
3. **Cox Communications** – Updated data was received from the provider. The coverage area was updated to better match actual coverage areas.
4. **Level3/Broadwing** – The coverage area was updated based on speed tests captured by Rhode Island.
5. **Lighttower** – Updated data was received from the provider. The coverage area was updated to better match actual coverage areas.
6. **One Communications** – The coverage area was updated based on speed tests captured by Rhode Island.
7. **Sprint** – Updated data was received from the provider. The coverage area was updated to better match actual coverage areas.
8. **T-Mobile** – Updated data was received from the provider. The coverage area was updated to better match actual coverage areas.
9. **Verizon** – Updated data was received from the provider. The coverage area was updated to better match actual coverage areas.
10. **Verizon Wireless** – Updated data was received from the provider. The coverage area was updated to better match actual coverage areas.

Corrections To The Data:

1. **New Edge Networks** – Changed definition of their services from provider to reseller
2. **Level3/Broadwing** - Level 3 corrected the location of 3 middle mile points and add two new middle mile locations.

3. **Verizon Wireless** – Technology types, spectrums, and speed information were provided for the first time during this data submission.
4. **Sprint** – Updated technology types, spectrums, and speed information were provided to match Sprints expansion.
5. **Cox Communications** – Speed information was provided for the first time during this data submission.

No Changes to The Data:

1. Broadviewnet
2. Cogent
3. FiberTech
4. Full Channel
5. Hughes Communications
6. Megapath/DSL.Net
7. Wildblue Communications



South Carolina Changes and Corrections

NTIA Submission April 1, 2011

Changes:

- AT&T Inc. (Mobile Wireless): Provider expanded service area.
- Farmers Telephone Cooperative, Inc. dba FTC Communications (Fiber): Provider expanded service area.
- Frontier Communications Corporation (DSL): Provider expanded service area.
- Home Telephone Company, Inc. dba Home Telephone Company, Inc. (Cable): Provider expanded service area.
- Horry Telephone Cooperative, Inc. dba Horry Telephone (DSL): HTC Communications merged with Horry Telephone Cooperative, Inc. HTC Communications is no longer in existence.
- Horry Telephone Cooperative, Inc. dba Horry Telephone (Fiber): HTC Communications merged with Horry Telephone Cooperative, Inc. HTC Communications is no longer in existence.
- Horry Telephone Cooperative, Inc. dba Horry Telephone (Cable): HTC Communications merged with Horry Telephone Cooperative, Inc. HTC Communications is no longer in existence.
- Horry Telephone Cooperative, Inc. dba Horry Telephone (Mobile Wireless): Provider expanded service area.
- Leap Wireless International, Inc. (Mobile Wireless): Provider expanded service area.
- Northland Communications Corp. (Cable): Provider expanded service area.
- West Carolina Rural Telephone Cooperative, Inc. dba West Carolina Rural Telephone Cooperative (Fiber): Provider expanded service area.

Corrections:

- Clearwire Corporation (Mobile Wireless): Provider was in service previously, but this is the first time data was submitted.
- Skyrunner, Inc. (Fixed Wireless): Provider indicated speed tier 8 last time, but changed speed to speed tier 7 download.
- United States Cellular Corporation (Mobile Wireless): Provider was previously in service, but this is the first time data was submitted.

Changes and/or Corrections – Entirely new dataset submitted:

- AT&T Inc. (DSL)
- CenturyLink (DSL)
- Charter Communications, Inc. (Cable)
- Comcast Cable Communications, LLC (Cable)



- Farmers Telephone Cooperative, Inc. dba FTC Communications (DSL)
- Farmers Telephone Cooperative, Inc. dba FTC Communications (Mobile Wireless)
- Farmers Telephone Cooperative, Inc. dba FTC Diversified Services, Inc. (DSL)
- Sprint Nextel Corporation (Mobile Wireless)
- TDS Telecommunications Corporation (DSL)
- Time Warner Cable LLC (Cable)
- T-Mobile USA, Inc. (Mobile Wireless)
- Verizon South Inc. (Mobile Wireless)



South Dakota

Changes and Corrections Spring 2011 Data Submission

Changes:

- **New Providers**
 - AT&T Mobility: AT&T was in the process of acquiring Alltel; therefore Alltel's footprint and supporting attribution from dataset 2 was used for AT&T for dataset 3
 - T-Mobile: Added coverage footprint for T-Mobile
- **Removed Providers**
 - Alltel: Replaced by AT&T, as mentioned above
- **Coverage Footprint Increases -**
 - Golden West Telecommunications Cooperative Inc: Increased significantly based on updates from the provider supporting DLSAM/Exchange boundary locations
 - Frontier Citizens Communications of Minnesota
 - Fort Randall Telephone Company
 - Interstate Telecommunications Cooperative, Inc.
 - Mitchell Telecom
 - Qwest Corporation
 - SDN Communications
 - TrioTel Communications Inc.
 - Valley Telecommunications
 - West River Telecommunications
- **Other Changes:**
 - Alliance Communications: Provided middle mile information this round
 - Venture Communications Coop.: Updated FRN and increased footprint based on updated infrastructure





South Dakota

Changes and Corrections Spring 2011 Data Submission

Corrections:

- **Provider Footprint Corrections**
 - Midcontinent Communications:
 - Decreased significantly as TT-41 was removed from the map as they no longer support that technology.
 - Middle Mile was also reduced significantly (34 to 1) as it was originally the DSL POPs that were supplied. These were removed in time for dataset 3.
- **Coverage Footprint Reductions/Map Refinement - Resulting from Validation (Provider Portal)**
 - Swiftel Communications
 - Cheyenne River Sioux Tribe Telephone Authority
 - Golden West Cablevision Inc
 - Midstate Communications
 - Long Lines
 - Beresford Municipal Telephone
 - Knology, Inc
 - RC Communications
 - West River Cooperative Telephone Company





Tennessee Changes and Corrections

NTIA Submission April 1, 2011

Changes:

- Ardmore Telephone Company Inc (DSL): service area expanded; Correction: upload speed revised from speed tier 4 to speed tier 3.
- Ben Lomand Rural Telephone Coop., Inc. (Fiber): additional area now serviced by fiber.
- Clearwire Corporation (Mobile Wireless): Provider migrated system from fixed wireless service to mobile wireless service.
- ECSIS.NET (Fixed Wireless): additional fixed wireless towers added.
- Fayetteville Public Utilities (Cable): additional area now serviced, upgraded advertised upload speed.
- Frontier Communications Corporation (DSL): additional areas now serviced by DSL.
- MidSouth Satellite, LLC (Fixed Wireless): additional fixed wireless towers added.
- Millington CATV, Inc. (Cable): additional areas now serviced by cable.
- Millington CATV, Inc. (DSL): additional areas now serviced by DSL; Correction: few small areas that cannot receive broadband service removed.
- Monster Broadband, Inc. (Fixed Wireless): additional fixed wireless towers added.
- Planet Connect Internet (Fixed Wireless): three towers are no longer in service, but an additional tower was put up.
- Rural Tennessee Wireless Broadband (RTWB) (Fixed Wireless): new provider; had previously gone out of business, but is back again.
- Zito Midwest, LLC (Cable): Zito Media acquired Galaxy Cable.

Corrections:

- Electric Power Board for the City of Chattanooga (Fiber): first time data was submitted for this provider.
- Leap Wireless International, Inc. (Mobile Wireless): upload speed decreased from speed tier 3 to speed tier 2; possible correction with spectrum change from 3 only to both 3 and 4.
- United States Cellular Corporation (Mobile Wireless): Provider was in service previously, but this is the first time data was submitted.

Changes and/or Corrections – Entirely new dataset submitted:

- AT&T Inc. (DSL)
- AT&T Inc. (Mobile Wireless)
- Cable ONE Inc. (Cable)
- CenturyLink (DSL)
- Charter Communications, Inc. (Cable)
- Comcast Cable Communications, LLC (Cable)
- Sprint Nextel Corporation (Mobile Wireless)



- TDS Telecommunications Corporation (DSL)
- TDS Telecommunications Corporation (Fiber)
- T-Mobile USA, Inc. (Mobile Wireless)
- Verizon Communications, Inc. (Mobile Wireless)



Texas Changes and Corrections

NTIA Submission April 1, 2011

Changes:

- Alenco Communications, Inc. (Fiber): Plant expansion.
- AwesomeNet, Inc. (Fixed Wireless): New fixed wireless towers in operation.
- Basin 2 Way Radio, Inc. (Fixed Wireless): New fixed wireless towers in operation.
- Cap Rock Telephone Cooperative, Inc. (Fixed Wireless): New fixed wireless tower in operation.
- Celltex Networks, LLC (Fixed Wireless): New fixed wireless provider in the market.
- Clearwire Corporation dba Clearwire (Fixed Wireless): Provider migrated part of service area from fixed wireless to mobile wireless.
- Clearwire Corporation dba Clear (Mobile Wireless): Provider migrated part of service area from fixed wireless to mobile wireless.
- Coleman County Telephone Cooperative, Inc. (DSL): Plant expansion.
- Community Telephone Company, Inc. (DSL): Plant expansion.
- CTX Unwired (Fixed Wireless): New fixed wireless towers in operation.
- Cumby Telephone Cooperative, Inc. (Fiber): Plant expansion.
- Eastex Telephone Cooperative, Inc. (DSL): Plant expansion.
- Eccentrix Technologies, LLC (Fixed Wireless): New fixed wireless towers in operation.
- ENMR Telephone Cooperative, Inc. (Fiber): Provider upgraded some DSL areas to FTTH.
- ERF Wireless (Fixed Wireless): New fixed wireless towers in operation.
- Five Area Telephone Cooperative, Inc. (DSL): Plant expansion.
- Gower Computer Support, Inc. (Fixed Wireless): New fixed wireless tower in operation.
- Gtek Communications (Fixed Wireless): New fixed wireless towers in operation.
- Guadalupe Valley Communications Systems (Fiber): Plant expansion.
- Guadalupe Valley Communications Systems (DSL): Plant expansion.
- GVEC.net (Fixed Wireless): New fixed wireless towers in operation.
- JAB Wireless, Inc. (Fixed Wireless): JAB Wireless, Inc. acquired Dot 11 Networks and Partnership Broadband.
- Mid-Plains Rural Tel. Co-op. Inc. (DSL): Plant expansion.
- Mid-Plains Rural Tel. Co-op. Inc. (Fiber): Provider upgraded some DSL areas to FTTH.
- Millennium Telcom, LLC (Fixed Wireless): New fixed wireless tower in operation.
- Neu Ventures, Inc. (Fixed Wireless): New fixed wireless towers in operation.
- Nortex Communications (Fixed Wireless): New fixed wireless tower in operation.
- Nortex Communications (Cable): Provider upgraded infrastructure and can now offer speed tier 7 download speeds.
- Nortex Communications (Fiber): Provider upgraded infrastructure and can now offer speed tier 7 download speeds.



- Nortex Communications (DSL): Provider upgraded infrastructure and can now offer speed tier 7 download speeds.
- North Texas Cellular, Inc. dba Brazos Telephone Cooperative, Inc. (DSL): Plant expansion.
- Northland Communications (Cable): Plant expansion.
- Poka Lambro Telephone Cooperative, Inc. (Fixed Wireless): New fixed wireless tower in operation.
- Poka Lambro Telephone Cooperative, Inc. (DSL): Plant expansion.
- RB3, LLC (Fixed Wireless): New fixed wireless tower in operation.
- RB3, LLC (Cable): Removed Lake Cherokee system, as it was sold to Buford/Alliance Cable.
- Ridgewood Cable (Fixed Wireless): New fixed wireless tower in operation.
- Rock Solid Internet & Telephone (Fixed Wireless): New fixed wireless towers in operation.
- South Plains Telephone Cooperative, Inc. (Fiber): Plant expansion.
- Speed of Light Broadband, Inc. (Fixed Wireless): New fixed wireless towers in operation.
- Texas CellNet (Fixed Wireless): Provider decommissioned some tower sites, so they were removed from the composite coverage.
- TGN Cable (Cable): Provider upgraded infrastructure and can now offer speed tier 5 download speeds.
- WEHCo Video, Inc. (Cable): Plant expansion.
- Wharton County Electric Cooperative, Inc. (Fixed Wireless): New fixed wireless towers in operation.
- XIT Telecommunications & Technology, Ltd. (Fiber): Plant expansion.
- XIT Telecommunications & Technology, Ltd. (DSL): Used DSLAM network depiction instead of full exchange.
- Zito Midwest, LLC (Cable): Zito Midwest, LLC acquired Galaxy Cablevision.

Corrections:

- Central Texas Telephone Investments, LP (Fixed Wireless): Central Texas Telephone Investments was previously non-responsive, but they provided data this round.
- DigiComm Enterprises, LLC (Fixed Wireless): Provider had indicated speed tiers 6 & 7 last round for some towers, but they should have been tier 5; speed tiers corrected for April submission.
- Dot 10 Wireless, LLC (Fixed Wireless): Dot 10 Wireless, LLC was previously non-responsive, but they provided data this round.
- Element Networks, LLC (Fixed Wireless): Provider wanted propagation recreated because it extended beyond allowable installation practices. April 2011 propagation is more refined.
- Helmsco, Inc. (Fixed Wireless): Helmsco, Inc. was previously non-responsive, but they provided data this round.
- Hi Speed Wireless (Fixed Wireless): Hi Speed Wireless was previously non-responsive, but they provided data this round.

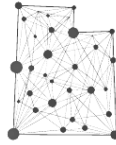


- IGN-LPG Enterprises LLC (Fixed Wireless): IGN-LPG Enterprises LLC was previously non-responsive, but they provided data this round.
- Industry Telephone Company (DSL): Provider noted incorrect exchange depiction; April 2011 data is more-refined.
- Maverick Internet (Fixed Wireless): Updated tower height based on consumer Broadband Inquiry and recreated the entire propagation.
- South Plains Telephone Cooperative, Inc. (DSL): Noticed exchange boundary was a bit off in a couple of places; April 2011 data shows correct exchange.
- Stelera Wireless, LLC (Mobile Wireless): Provider initially submitted as fixed wireless. After confirmation from provider this was updated to mobile and typical speeds were included this round.
- United States Cellular Corporation (Mobile Wireless): U.S. Cellular was in service previously, but this is the first time data was submitted.
- Verizon Southwest, Inc. (Fiber): Provider combined DSL and FTTH coverage last submission, but separated it out for April 2011.

Changes and/or Corrections – Entirely new dataset submitted:

- AT&T Inc. (DSL)
- AT&T Inc. (Mobile Wireless)
- Cable ONE Inc. (Cable)
- CenturyLink (DSL)
- Charter Communications, Inc. (Cable)
- Comcast Cable Communications, LLC (Cable)
- Consolidated Communications (DSL)
- Leap Wireless International, Inc. (Mobile Wireless)
- Sprint Nextel Corporation (Mobile Wireless)
- Time Warner Cable LLC (Cable)
- T-Mobile USA, Inc. (Mobile Wireless)
- Verizon Southwest, Inc. (DSL)
- Verizon Southwest, Inc. (Mobile Wireless)
- Windstream Communications (DSL)

Utah Broadband Changes and Corrections: December 2010 Data



THE STATE OF UTAH BROADBAND PROJECT

Changes in data:

AT&T	Provider adjusted their service area.
Bresnan - Cablevision	Bresnan was bought out by Cablevision and coverage expanded.
CentraCom/Central Utah Telephone	Provider adjusted their service area.
Clearwire	Provider adjusted their service area.
Comcast	Provider adjusted their service area.
Covad	Provider adjusted their technology information.
Leap Wireless	Provider adjusted their service area.
Level 3 Communications	Provider adjusted their service area.
Qwest	Provider adjusted their service area.
Sprint	Provider adjusted their service area.
Strata	Provider adjusted their service area.
Verizon	Provider adjusted their service area.

Corrections in data:

Albion Telephone Company	First round data was collected for this provider.
All West	Received improved data from provider.
Alta zip	First round data was collected for this provider.
Baja Broadband	Received improved data from provider.
Beehive Telephone	Adjusted data per provider's feedback.
Cache Broadband	First round data was collected for this provider.
Catapulsion	First round data was collected for this provider.
Emery Telcom	Received improved data from provider.
Frontier	Adjusted data per provider's feedback.
Gunnison Telephone	Adjusted data per provider's feedback.
InfoWest	Provider submitted improved wireless data.
Manti Telephone	Provider submitted wireless area for the first time.
Nebonet	First round data was collected for this provider.
River Canyon Wireless	First round data was collected for this provider.
SkyWire	First round data was collected for this provider.
T-Mobile	First round data was collected for this provider.

No change from previous submissions:

360 Networks
American Fiber Systems
Direct Communications
Hughes
Integra
Myvocom
SatView
South Central
Spanish Fork

Union
Utah Broadband
UTOPIA
Veracity
WildBlue
XO Communications
Xpressweb
Digis



SBDD Changes and Corrections April, 2011 NTIA Submittal

Changes:

- **AT&T Wireless (0004979233)** – First time Provider.
- **Cox Communications (0001524461)** - Geocoding results revealed increased customer base / provider coverage area.
- **Cricket Communications, Inc. (0002963528)** – First time provider.
- **Level 3 Communications, LLC (0003723822)** – First time provider.
- **MGW Networks, LLC (0019225366)** - Geocoding results revealed increased match results with address points thus reducing line submission.
- **Mid-Atlantic Broadband Cooperative (0019765304)** – Geocoding results revealed point data appears to have increased.
- **NTELOS Network Inc. (0003742442)** – Geocoding results revealed change in customer base / provider coverage area.
- **NTELOS Telephone Inc. (0002073138)** – Geocoding results revealed change in customer base / provider coverage area.
- **R&B Network Inc. (0003775301)** – Geocoding results revealed change in customer base / provider coverage area.
- **Roanoke and Botetourt Telephone Company (0003775244)** – Geocoding results revealed change in customer base / provider coverage area.
- **Shentel (0018024075)** - Data reworked to match provider submission type, only Blocks and lines submitted for spring 2011. No address points were geocoded. With provider feedback, map errors were found and corrected.
- **Sprint (0003774593)** - Added new coverage polygon which appears to represent 4G.
- **TDS Telecom (0002058261, 0003767399, 0002073526)** - Geocoding results revealed increased customer base / provider coverage area.
- **T-Mobile (0006945950)** - Significantly increased its HSPA plus coverage across Virginia.
- **Verizon Wireless (0003290673)** - Added LTE polygon feature class to submission. Increased EVDO coverage.

Corrections:

- **CenturyLink (0018626853)** – Increased coverage area in source data visibly noticed. Data reworked to match provider submission, only Blocks and lines submitted for fall 2011. No address points geocoded.
- **Charter (0017179383)** – Data reworked to match provider submission, only Blocks and lines submitted for fall 2011. No address points geocoded.
- **Comcast (0004441663)** – Data reworked to match provider submission. Only Blocks and lines submitted for fall 2011. No address points geocoded.

- **Covad (0003753753)** - Data reworked to match provider submission, only Blocks and lines submitted for fall 2011. No address points geocoded.
- **New Hope Telephone Cooperative (0002071579)** – Address points left out to match last provider submission.
- **Northern Neck Wireless Internet Services, LLC (0017338054)** – Provider submitted address level data to CIT and VGIN, propagation model created by Virginia Tech for spring 2011 submission.
- **Roadstar Internet (0013445358)** - Provider submitted address level data to CIT and VGIN, propagation model created by Virginia Tech for spring 2011 submission.
- **Time Warner Cable (0013430244)** – Increased coverage area in source data visibly noticed. Data reworked to match provider submission, only Blocks and lines submitted for fall 2011. No address points geocoded.
- **Verizon Wireline (0002073203)** – Data reworked to match provider submission, only Blocks and lines submitted for fall 2011. No address points geocoded. Corrected Transmission technology and speed issue in NOVA.



**United States Virgin Islands Broadband Data Changes and Corrections
December 31, 2010 Data**

Changes:

- **Choice Communications** – Added 4G service (Terrestrial Mobile Wireless)

Corrections:

- **AT&T Mobility** – First round in which data was collected from this provider
- **Choice Communications** – removed polygon parts smaller than 0.125 sq. mi. (Terrestrial Fixed Wireless)
- **HughesNet** – First round in which data was collected from this provider
- **Sprint Mobile** – First round in which data was collected from this provider
- **Starband Communications** – First round in which data was collected from this provider



VT Broadband Data Changes and Corrections



December 31, 2010 Data

DoingBusinessAs	CompanyName	FCC_FRN	Changes/Corrections
AT&T Mobility	AT&T Mobility LLC	0004979233	No major changes/corrections
Burlington Telecom	City of Burlington	0010480093	No major changes/corrections
Charter Communications	The Helicon Group, LP	0003746468	No major changes/corrections
Cloud Alliance	Cloud Alliance, LLC	0018600445	No major changes/corrections
Comcast	Comcast, LLC	0003768165	No major changes/corrections
Duncan Cable	Duncan Cable	0016391716	No major changes/corrections. Updated speed info.
FairPoint Communications	FairPoint Communications Inc.	0003723202	Added some new coverage areas.
FairPoint Vermont	FairPoint Vermont	0017551359	No major changes/corrections
Franklin Telephone Company, Inc.	Franklin Telephone Company, Inc.	0004356952	No major changes/corrections
GlobalNet	GlobalNet	0018331173	No major changes/corrections
Great Auk Wireless, LLC	Great Auk Wireless, LLC	0017383332	NO DATA SUBMITTED - NOT REPRESENTED
Green Mountain Access	Green Mountain Access	0004956652	Provided address level data instead of exchange polygons. No major changes/corrections.
Hughes Network Systems LLC	Hughes Network Systems LLC	0018483073	No major changes/corrections
Kingdom Connection	Kingdom Connection	0017631540	No major changes/corrections
Level 3 Communications	Level 3 Communications, LLC	0003723822	Added some new coverage areas.
North Branch Networks	North Branch Networks, LLC	0018206391	No major changes/corrections
North Country Communications	North Country Communications	0019521087	No major changes/corrections
One Communications	One Communications	0015337702	Added some new coverage areas for "other copper wireline".
SegTel	SegTel	0006204630	Added some new coverage areas.
Smuggler's Notch Water Company	Smuggler's Notch Water Company	0007320963	No major changes/corrections
Southern Vermont Broadband Cooperative	Southern Vermont Broadband Cooperative	NONE_VT029	No major changes/corrections
Southern Vermont Cable Company	Southern Vermont Cable Company	0003770351	Added some new coverage areas.



VT Broadband Data Changes and Corrections



December 31, 2010 Data

Sovernet Communications	Sovernet Communications	0015120850	No major changes/corrections
Sprint Nextel	Sprint Nextel Corporation	0003774593	No major changes/corrections
Starband	Spacenet Inc	0005087457	No major changes/corrections
Stowe Cablevision	Stowe Cablevision	0003755766	No major changes/corrections
TDS Telecom	TDS Telecommunications Corporation	0004948105	Added some new coverage areas.
TelJet	TelJet Longhaul LLC	0017834540	No major changes/corrections
Topsham Telephone Company	Topsham Telephone Company	0016569485	Added new fiber coverage areas.
Trans-Video Cable	Trans-Video Cable	0003770401	Added some new coverage areas.
U.S. Cellular	Vermont RSA No. 2-B2, Inc.	0004372322	No major changes/corrections
Verizon Wireless	Verizon Wireless	0003290673	No major changes/corrections
Vermont Telephone Company	Vermont Telephone Company	0003646213	No major changes/corrections
WaveComm	WaveComm	0003665080	Added some new coverage areas.
WildBlue Communications	WildBlue Communications, Inc.	0007843766	No major changes/corrections
WirelessVT Solutions	WirelessVT Solutions	NONE_VT046	No major changes/corrections



Sanborn
Ann Arbor

Telephone: 734-213-1060
Fax: 734-213-1085
www.sanborn.com

State of Washington Broadband Data: Changes and Corrections:

December 31, 2010 (April 1, 2011 NTIA Submittal)

Corrections

Provider	Description
Public Utility District of Chelan County	First round in which data was collected from this provider.
Capacity Provisioning, Inc.	First round in which data was collected from this provider.
Public Utility District of Clallam County	First round in which data was collected from this provider.
Columbia Rural Electric Association	First round in which data was collected from this provider.
Public Utility District of Grant County	First round in which data was collected from this provider.
Public Utility District of Grays Harbor County	First round in which data was collected from this provider.
Orcas Power & Light Cooperative (Island Network)	First round in which data was collected from this provider.
Northstar Broadband	First round in which data was collected from this provider.
Public Utility District of Grays Harbor County	First round in which data was collected from this provider.
TDS Telecom	Provider adjusted service area. Provider improved or degraded speeds.
Time Warner Cable	Provider adjusted service area. Provider degraded speeds.

Changes

Provider	Description
AT&T Mobility LLC	Provider adjusted service area. Provider expanded spectrums .
Broadstripe	Provider degraded speeds.

Cable One Inc.	Provider adjusted service area.
Cellco Partnership - (DBA: Verizon Wireless LLC)	Provider adjusted service area. Provider expanded spectrums .
CenturyLink	Provider adjusted service area. Provider improved or degraded speeds.
Charter Communications Inc.	Provider adjusted service area. Provider improved or degraded speeds.
Clearwire Corporation - (DBA: Clear and Clearwire)	Provider adjusted service area.
Cogent Communications	Provider adjusted service area.
Comcast Cable	Provider adjusted service area. Provider improved speeds.
Covad Communications Company	Provider adjusted service area.
CresComm Service Inc.	Provider adjusted service area. Provider improved speeds.
Frontier Communications Northwest Inc. - (DBA: Frontier Communications Online & Long Distance Inc.)	Provider adjusted service area.
Leap Wireless International, Inc. - (DBA: Cricket Communications, Inc.)	Provider adjusted service area. Provider degraded speeds.
Level 3 Communications, LLC	Provider adjusted service area.
Mashell Telecom, Inc. - (DBA: Rainier Connect, State: WA)	Provider adjusted service area.
Qwest Corporation	Provider adjusted service area. Provider improved speeds.
Swtooth Technologies LLC - (DBA: SAWNET)	Provider adjusted service area.
Sprint Nextel Corporation - (DBA: Sprint)	Provider adjusted service area. Provider expanded spectrums .
St John Cooperative Telephone and Telegraph/Colfax Cable/ St John Cable	Provider improved or degraded speeds.
T-Mobile	Provider adjusted service area.
Washington Broadband, Inc. - (DBA:WABBAND)	Provider improved speeds.
Whidbey Telephone Company - (DBA: Whidbey Telecom)	Provider adjusted service area.

State of Wisconsin

Submission Changes

4/1/11 NTIA Submission versus 10/1/10 NTIA Submission

Census Block and Road Segment Data

-Charter Communications, significant change in how data was received (format of submission)

-Cochrane Telephone Coop, change in how data was received.

-DSLNet, Dieca, Megapath. Data held back in submission 2 due to uncertainties in NTIA compliance. Added in under new Provider Type designation

-Karban TV Systems, Inc. (KTVS), New Provider in Study.

-Overall significant increase in number of road segments due to obtaining TLID as well as improvements in segment gathering geospatial process

Wireless

-Bertram Communications, LLC, New Provider in study.

-Bug Tussel Wireless, New Provider in study.

-Clearwire, New Provider in study.

-Excel.net, New Provider in study.

-Fastbytes Wireless, New Provider in study.

-Northern Telephone and Data, New Provider in study.

-Sonicnet, New Provider in study.

-WIconnect Wireless LLC, New Provider in study.

-WildBlue-Satellite footprint included as submitted.

-Error in Verizon Wireless, FRN

Address Points

-Slight change due to manner of provider data development

Middle Mile

Some points were lost due to out of State verification in check script

State of West Virginia

Submission Changes

4/1/11 NTIA Submission versus 10/1/10 NTIA Submission

Census Block and Road Segment Data:

Frontier Data changed from inaccurate and outdated address points to more accurate data derived from equipment locations.

Intelos Wireline Data added

Jet Broadband merged into Shentel

Verizon Data removed, previous coverage derived in new Frontier data due to Acquisition.

Various corrections to Suddenlink's data due to inaccuracies sent by them.

Wireless

New Provider: Cricket

New Provider: Gateway Telecom

Wildblue, Hughes, and Starband added as statewide satellite coverage.

Address Points:

Frontier Address Points removed and changed to more accurate Census and Road Data.

New Providers: DSL.NET and Gateway Telecom

Middle Mile

Intelos Wireline Middle Mile Points Added

Community Anchor Institutions

Institutions with unknown broadband status removed, to be added in as information is found.

State of Wyoming

Submission Changes

4/1/11 NTIA Submission versus 10/1/10 NTIA Submission

Census Block and Road Segment Data

- Advanced Communication Technology, new provider added to study
- Bresnan increase in blocks and road segments submitted. Change to advertised speed marketed within State.
- RT-Changes to service areas based upon submitted engineering data.
- DTE-Changes to service areas based upon submitted engineering data.
- DSLNet, Megapath, New Edge Networks. Data held back in submission 2 due to uncertainties in NTIA compliance. Added in under new Provider Type designation
- Nemont-New provider to Study.
- Wyoming.com added reseller area
- Silver Star Telephone Company-Changes to service boundaries based upon submitted engineering data.
- Overall significant increase in number of road segments due to obtaining TLID as well as improvements in segment gathering geospatial process

Wireless

- Advanced Communications, New Provider
- AllWest-revised, fixed wireless coverage
- Collins Communications-New Provider
- Visionary Communications-New Provider, all data was not submitted and will be in round 4
- WERCs-New Provider
- WildBlue-Satellite footprint included as submitted.
- Wyoming.com-Fixed coverage footprint due to Geoprocessing error
- Error in Verizon Wireless, FRN

Address Points

- Slight decrease in count due to subscriber data clean up.

Middle Mile

Some points were lost due to out of State verification in check script